

A modern outdoor terrace with a view of the ocean and palm trees. The terrace is furnished with contemporary outdoor furniture, including a sofa, armchairs, and a coffee table. The background shows a clear blue sky, a calm ocean, and lush greenery with palm trees. The entire scene is overlaid with a semi-transparent light blue filter.

ALTEA VILLAS

Las Terrenas





The residence

Our residence of 11 luxury villas is located 2000 ft from the beach and the center of Las Terrenas. Placed on the top of a hill, it offers breathtaking views of the ocean and of the surrounding hills.



Individual parcels

Each private villa is built on 3 levels with covered and uncovered terraces, plus rooftop. Own private swimming pool with sea view and outdoor shower, a patio, 2 parking spaces ... Each parcels has its individual property title.



The Villas

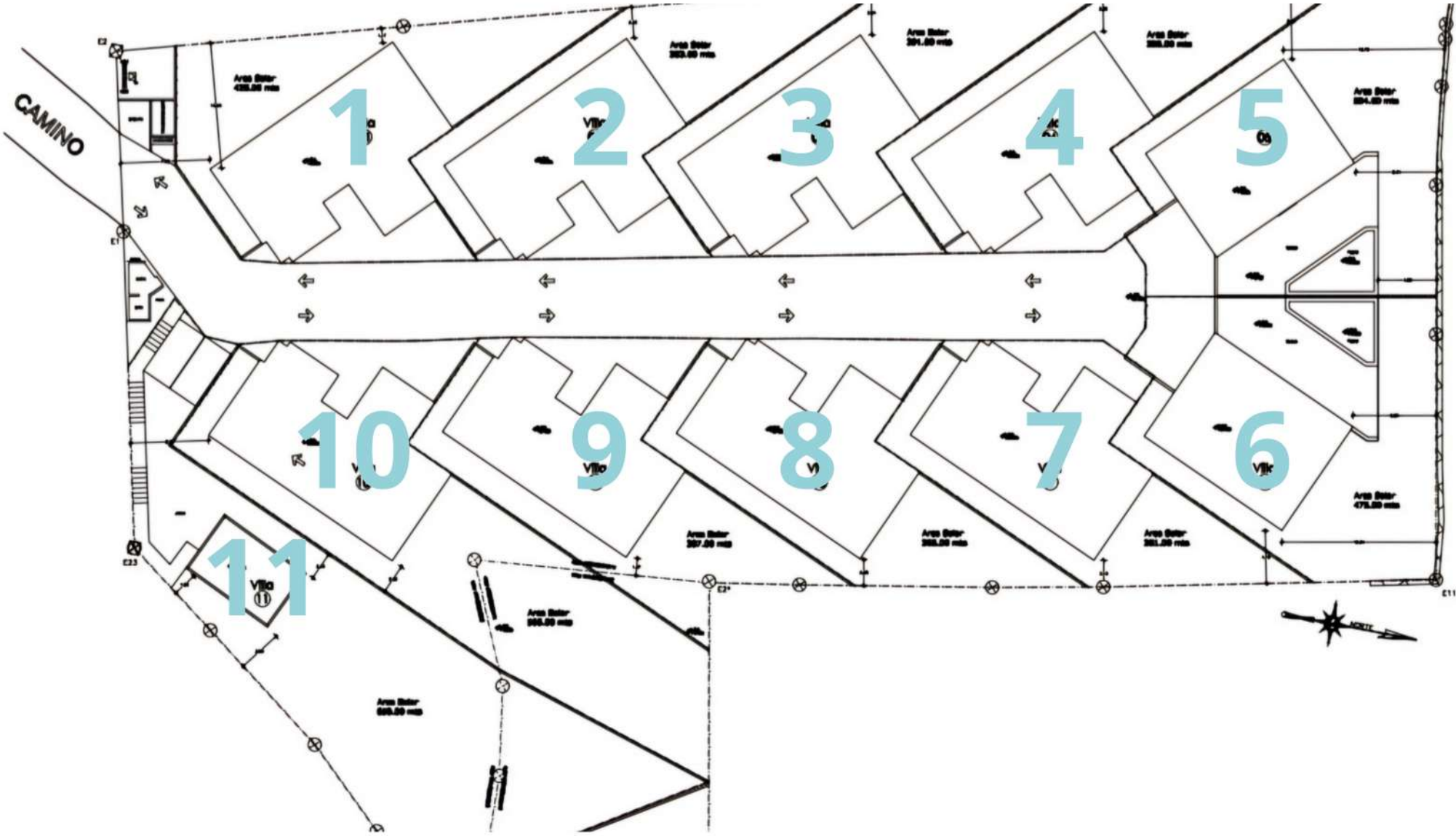
You can customize to include 3 or 4 bedrooms. Each bedroom has its own private bathroom and dressing room. The fully equipped modular kitchen, as well as double glazed windows and bay windows, are imported from Europe.

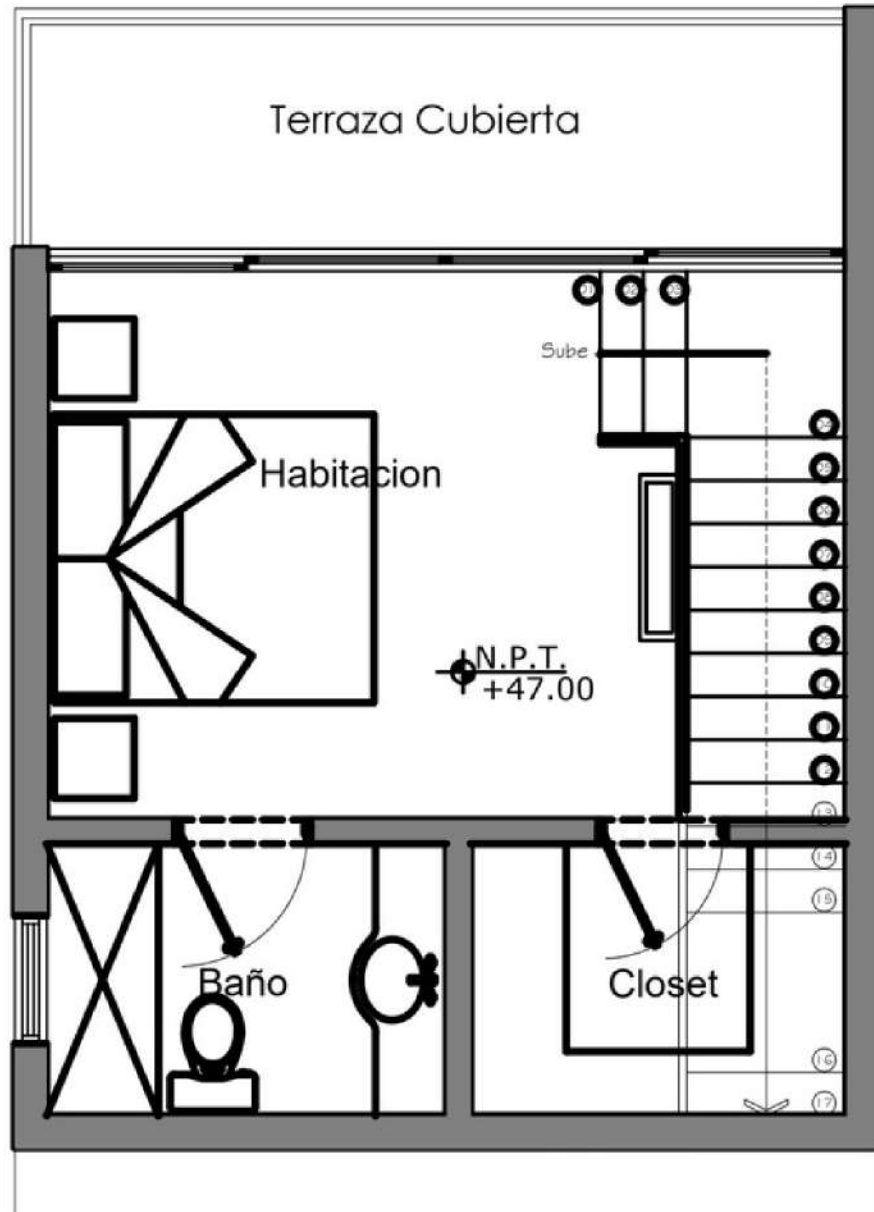


Options

Several exclusive options are available such as heated jacuzzi, pergolas, covered parking or salt system for the pool. You can choose our furniture and decoration package to have a turnkey house.

MASTER PLAN



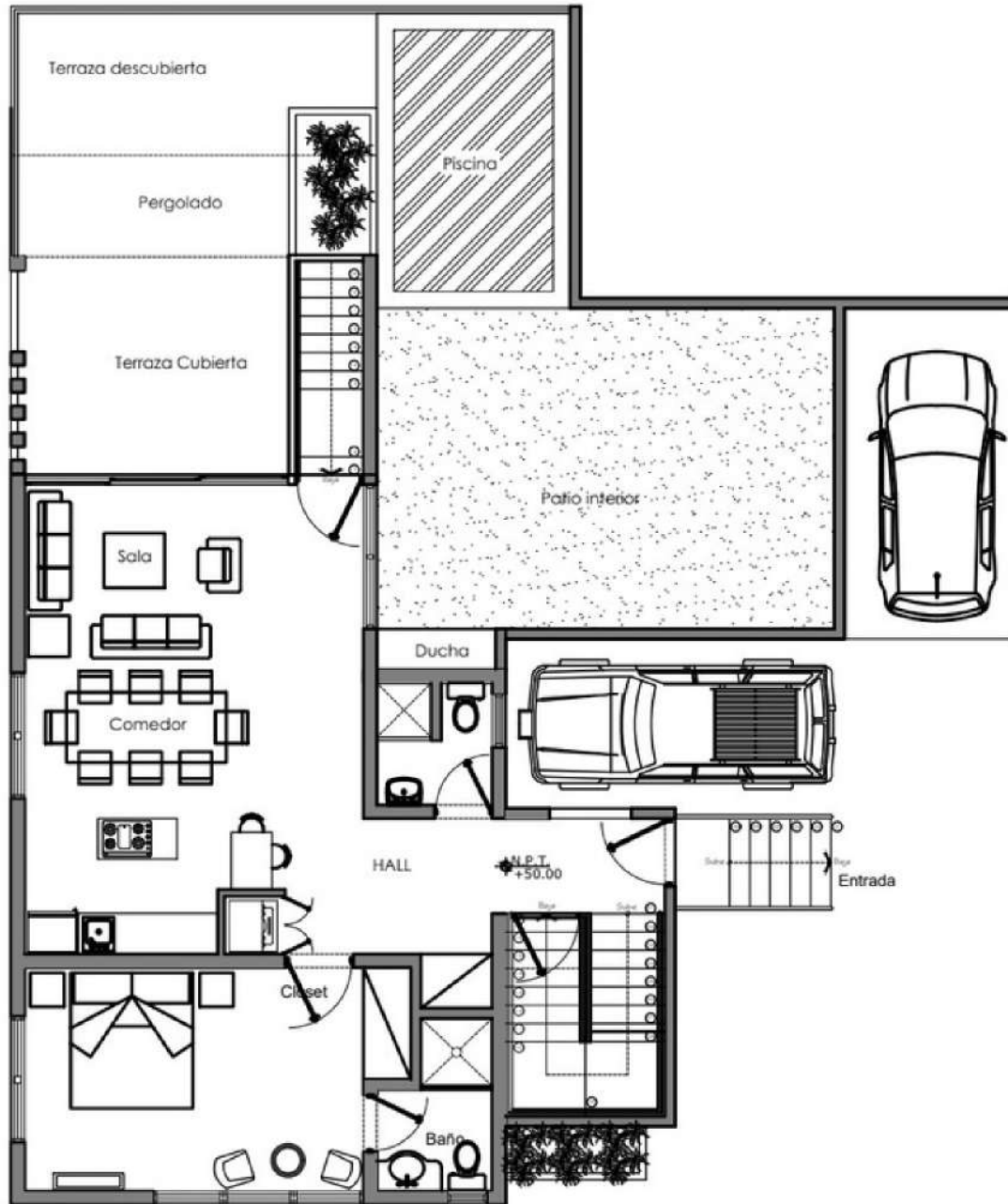


LEVEL -1 PLAN VILLAS 1,2,3,4

4090 ft²

LIVING SPACE 301 ft²
COVERED TERRACE 82 ft²

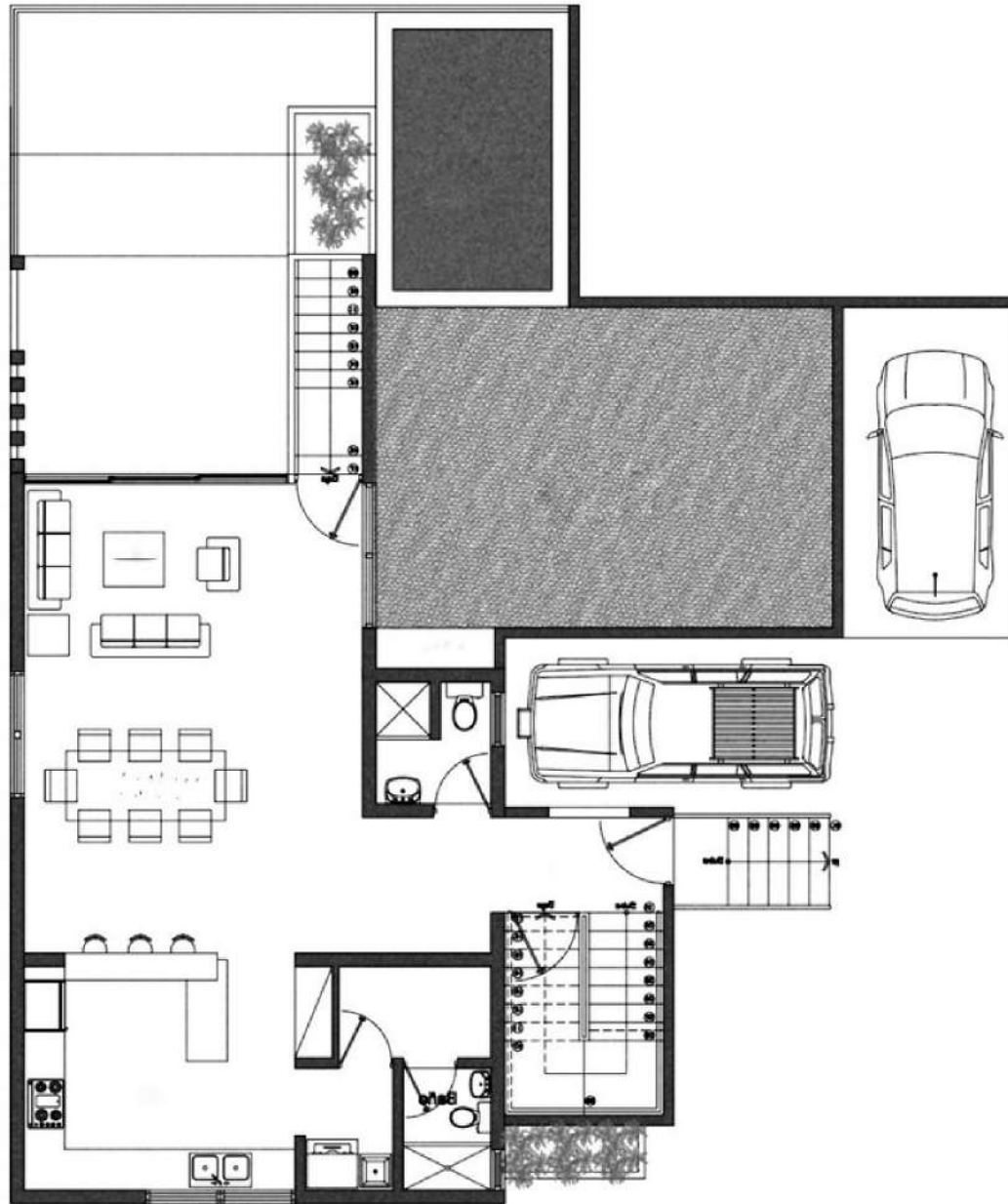




MAIN LEVEL PLAN VILLAS 1,2,3,4

4 bedrooms

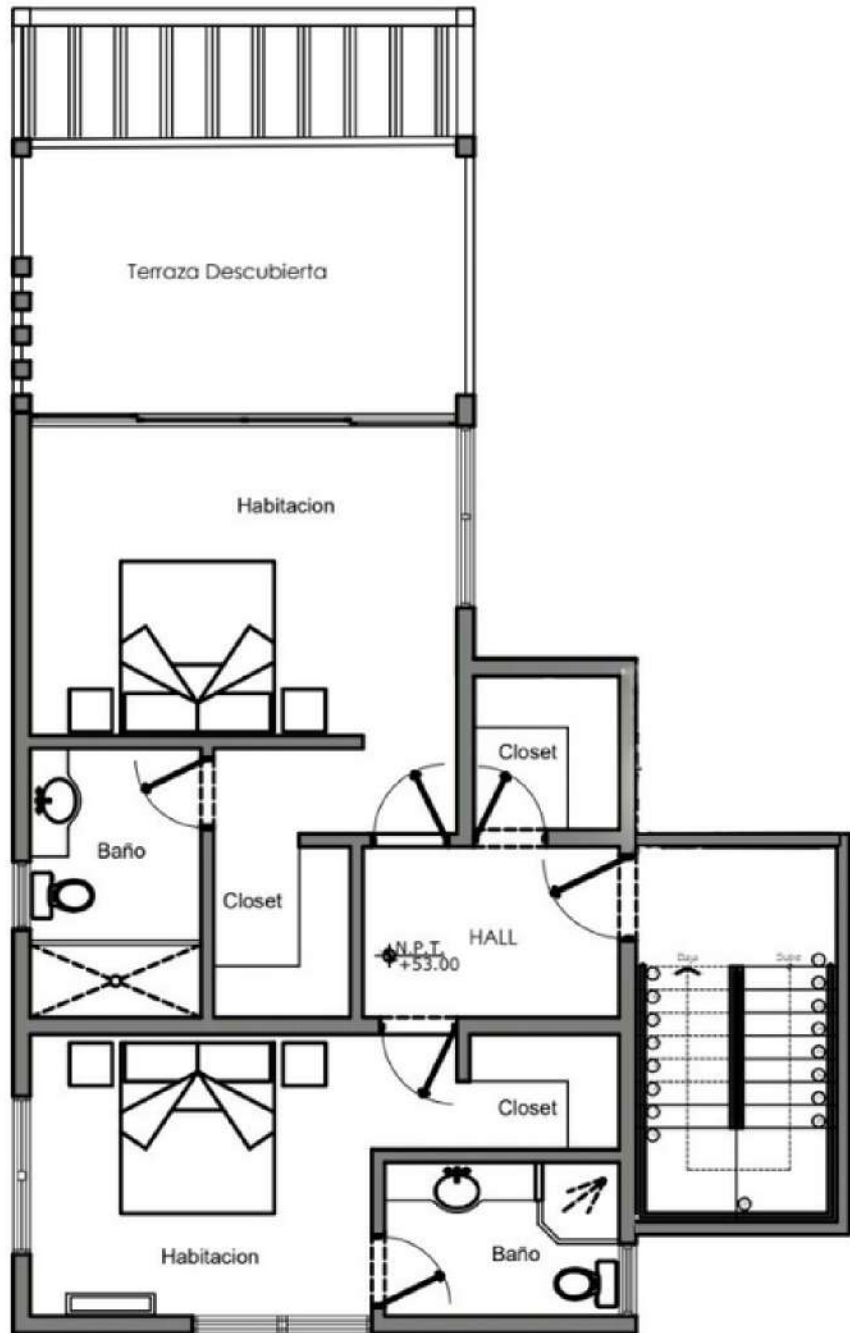
LIVING SPACE 287 ft²
 COVERED TERRACE 53 ft²
 UNCOVERED TERRACE 66 ft²
 PATIO INTERIOR 111 ft²
 SWIMMING POOL 40 ft²



MAIN LEVEL PLAN VILLAS 1,2,3,4

3 bedrooms

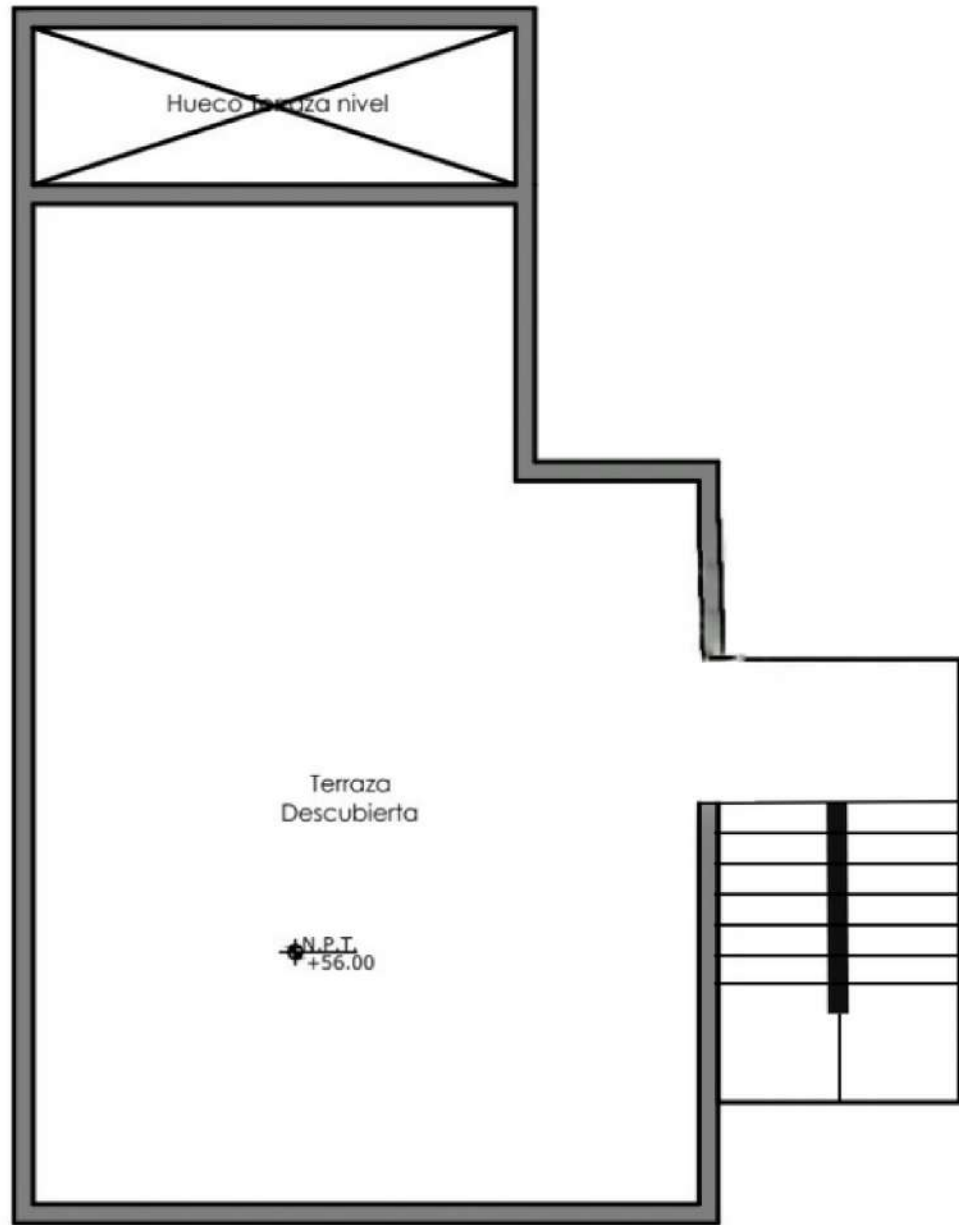
LIVING SPACE 287 ft²
COVERED TERRACE 53 ft²
UNCOVERED TERRACE 66 ft²
PATIO INTERIOR 111 ft²
SWIMMING POOL 40 ft²



LEVEL +1 PLAN VILLAS 1,2,3,4

LIVING SPACE 221 ft²
UNCOVERED TERRACE 53 ft²

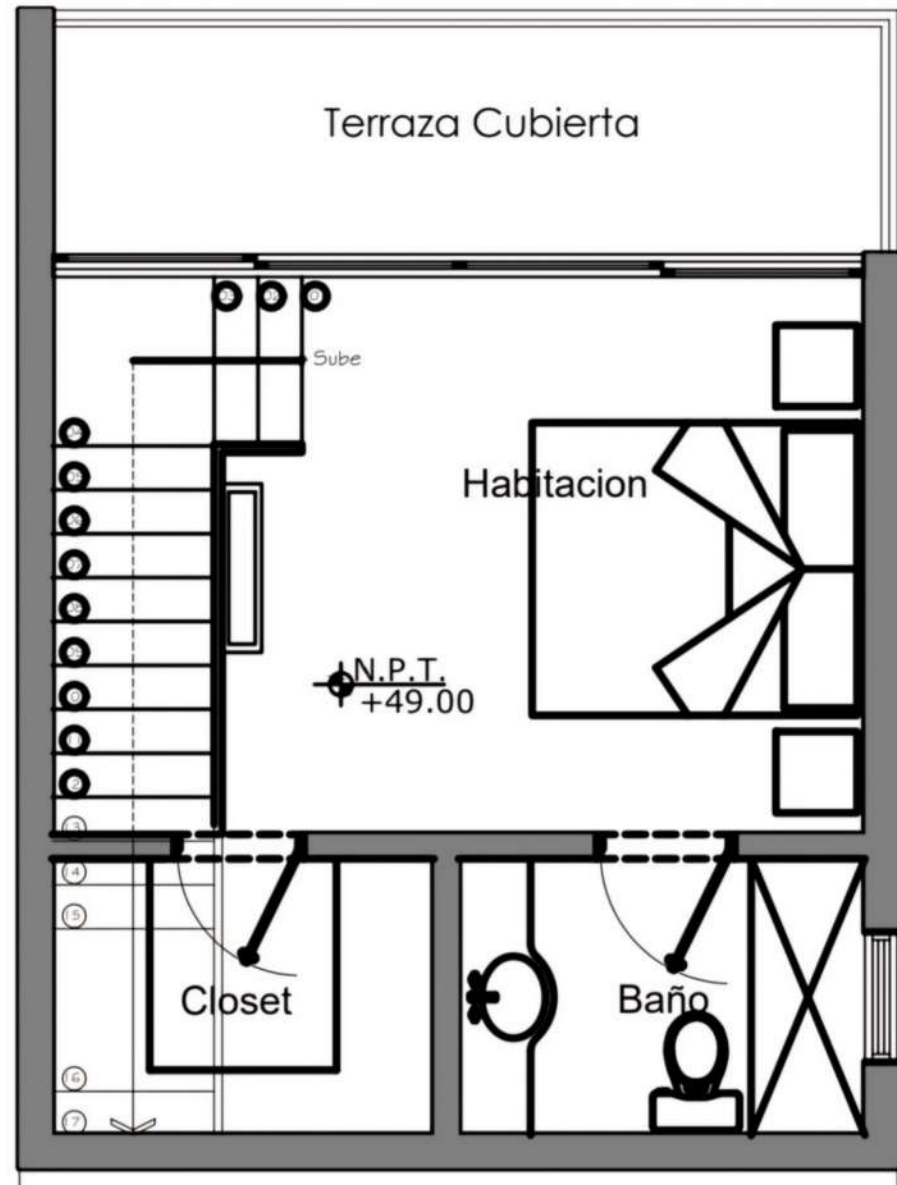




LEVEL -1 PLAN VILLAS 7,8,9,10

4090 ft²

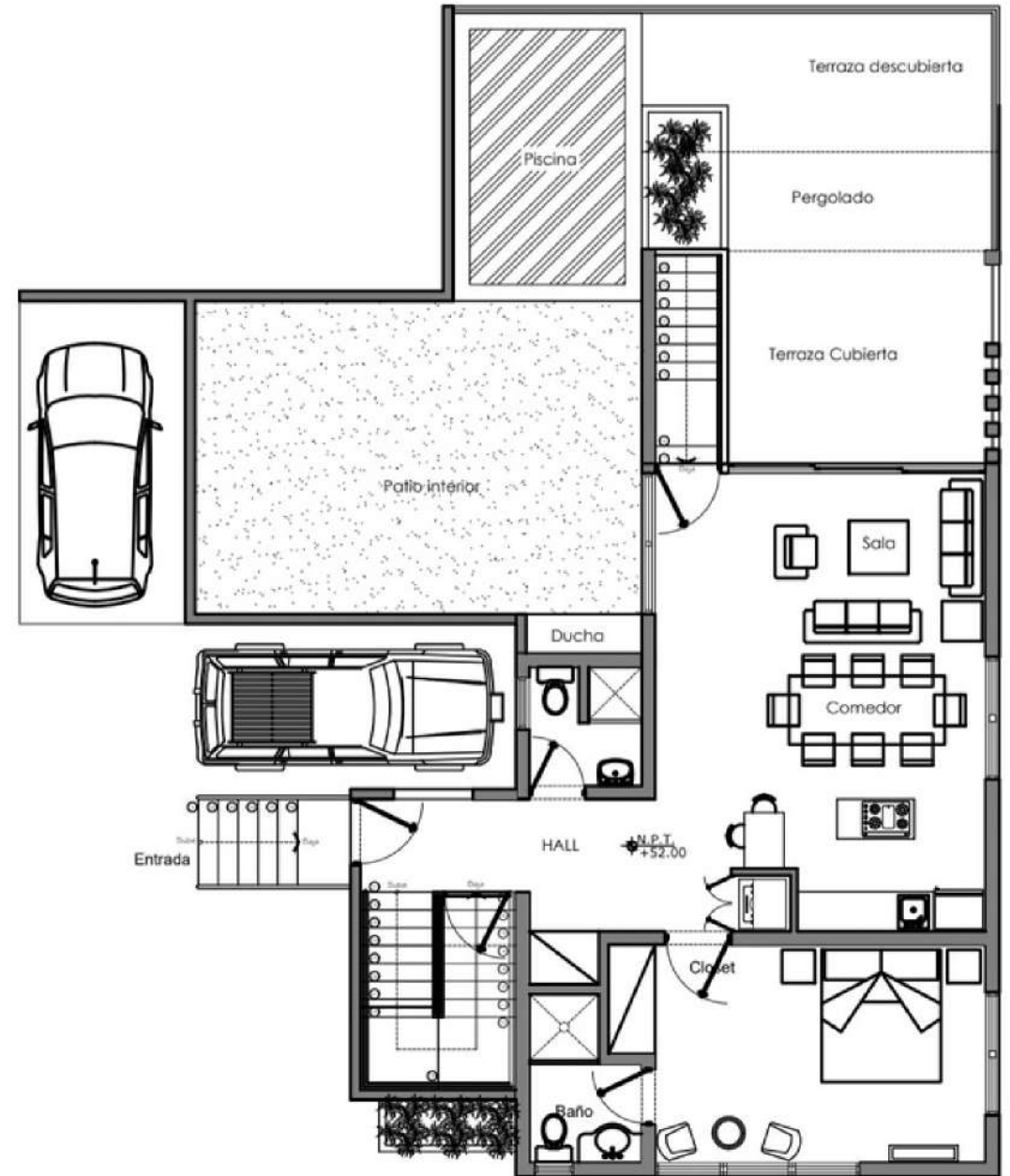
LIVING SPACE 301 ft²
COVERED TERRACE 82 ft²



MAIN LEVEL PLAN VILLAS 7,8,9,10

4 bedrooms

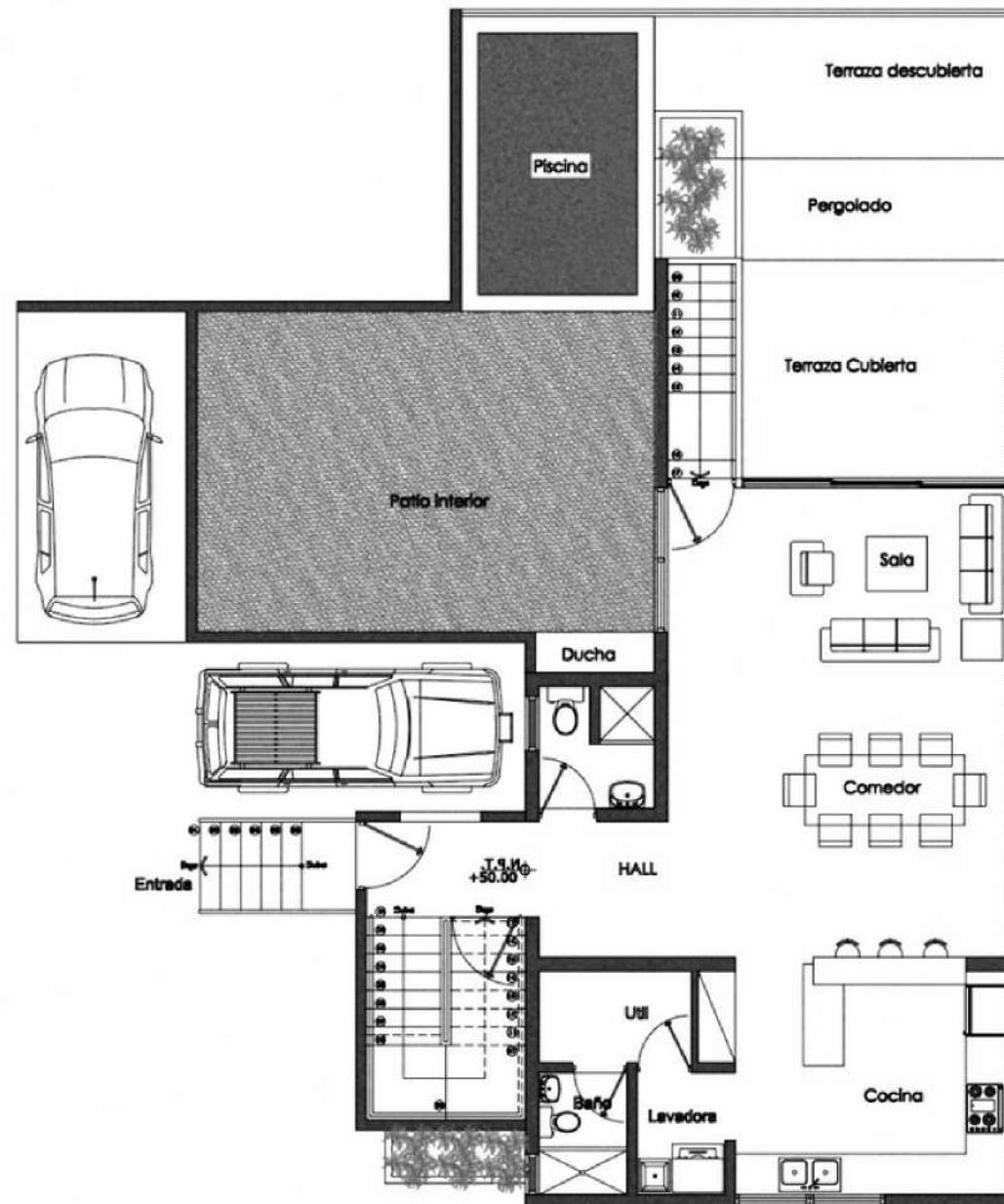
LIVING SPACE 1066 ft²
COVERED TERRACE 172 ft²
UNCOVERED TERRACE 215 ft²
PATIO INTERIOR 363 ft²
SWIMMING POOL 132 ft²



MAIN LEVEL PLAN VILLAS 7,8,9,10

3 bedrooms

LIVING SPACE 1066 ft²
COVERED TERRACE 172 ft²
UNCOVERED TERRACE 215 ft²
PATIO INTERIOR 363 ft²
SWIMMING POOL 132 ft²



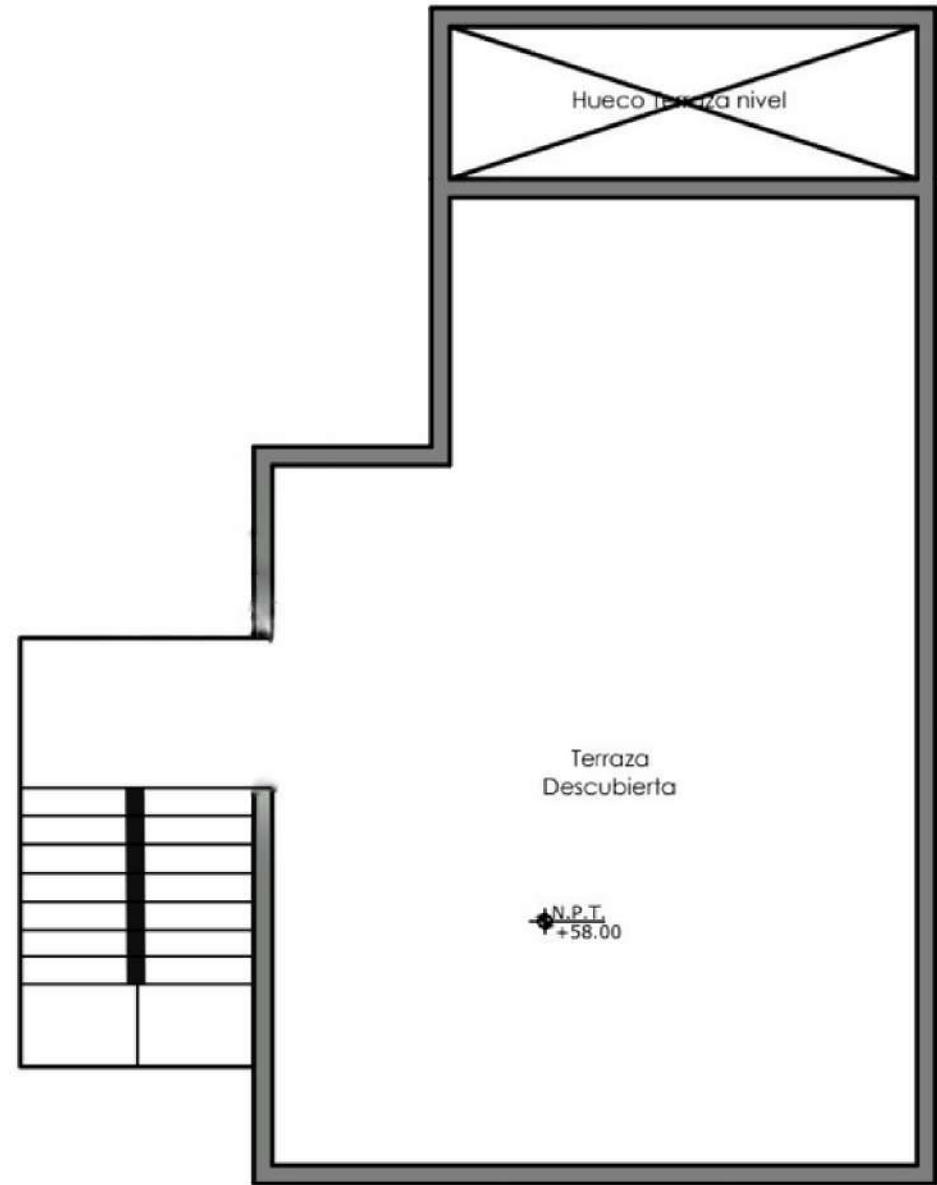
LEVEL +1 PLAN VILLAS 7,8,9,10

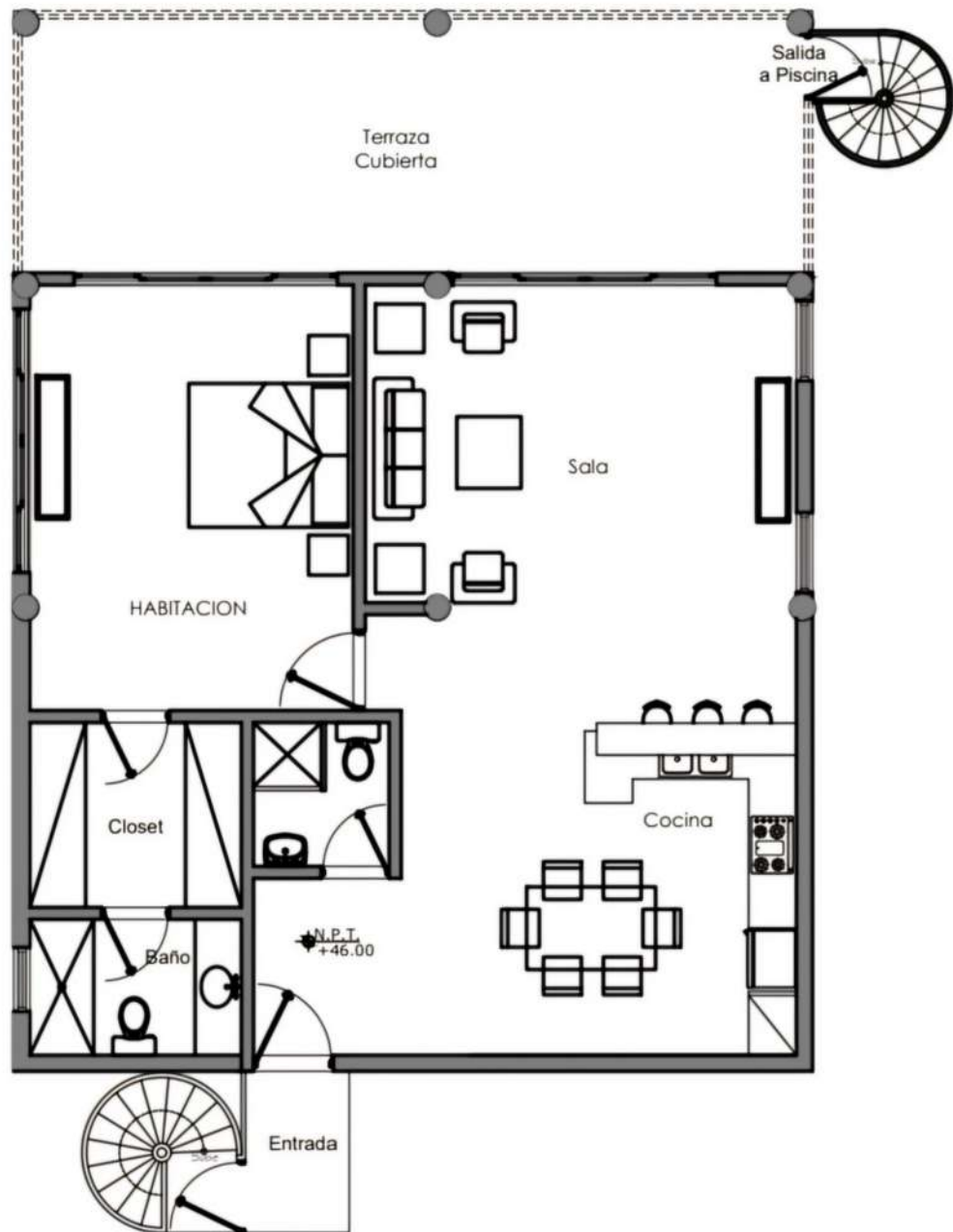
LIVING SPACE 727 ft²
UNCOVERED TERRACE 175 ft²



ROOFTOP PLAN VILLAS 7,8,9,10

DISCOVERED TERRACE 710 ft²

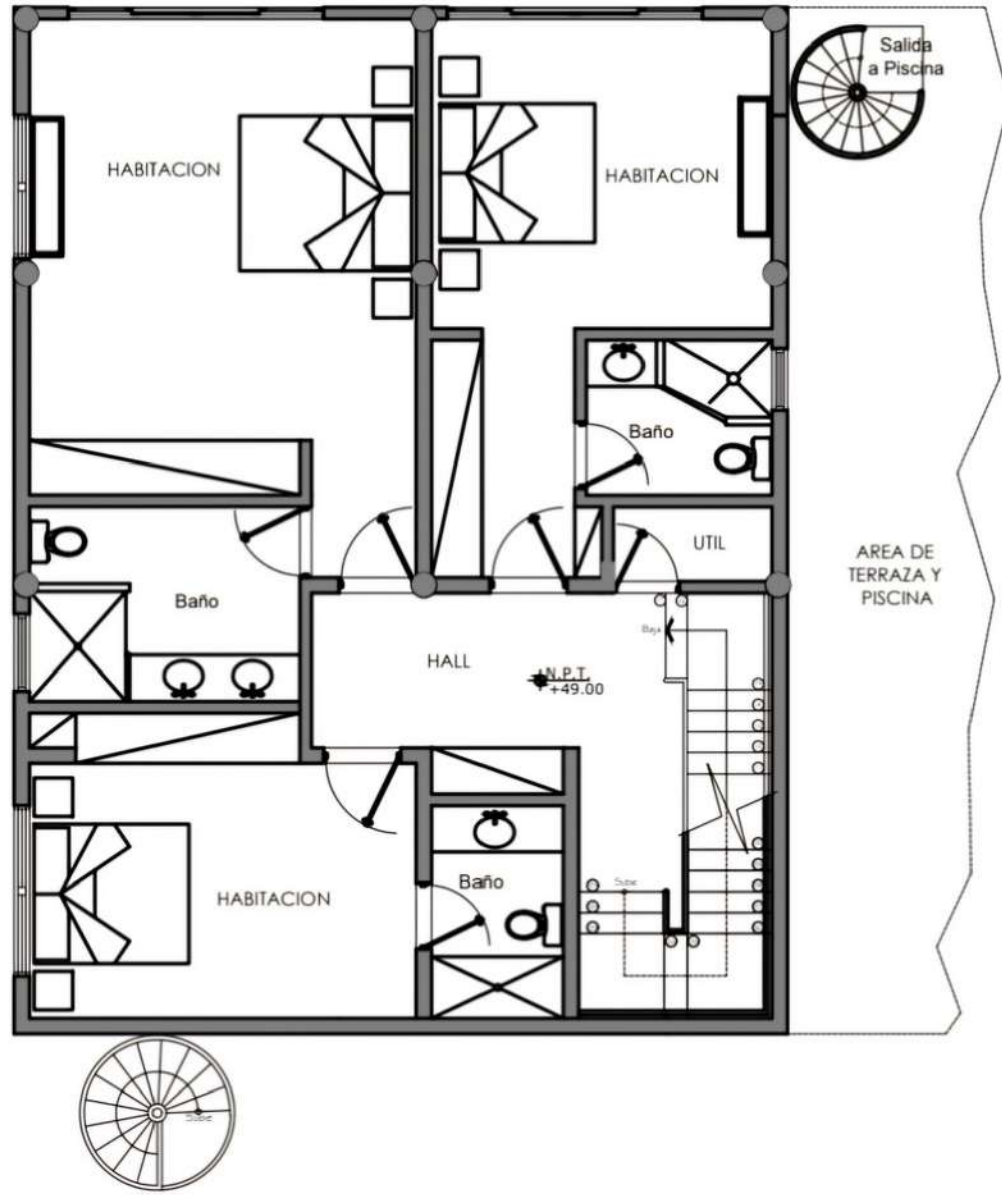




LEVEL -2 PLAN VILLA 5

5651 ft²

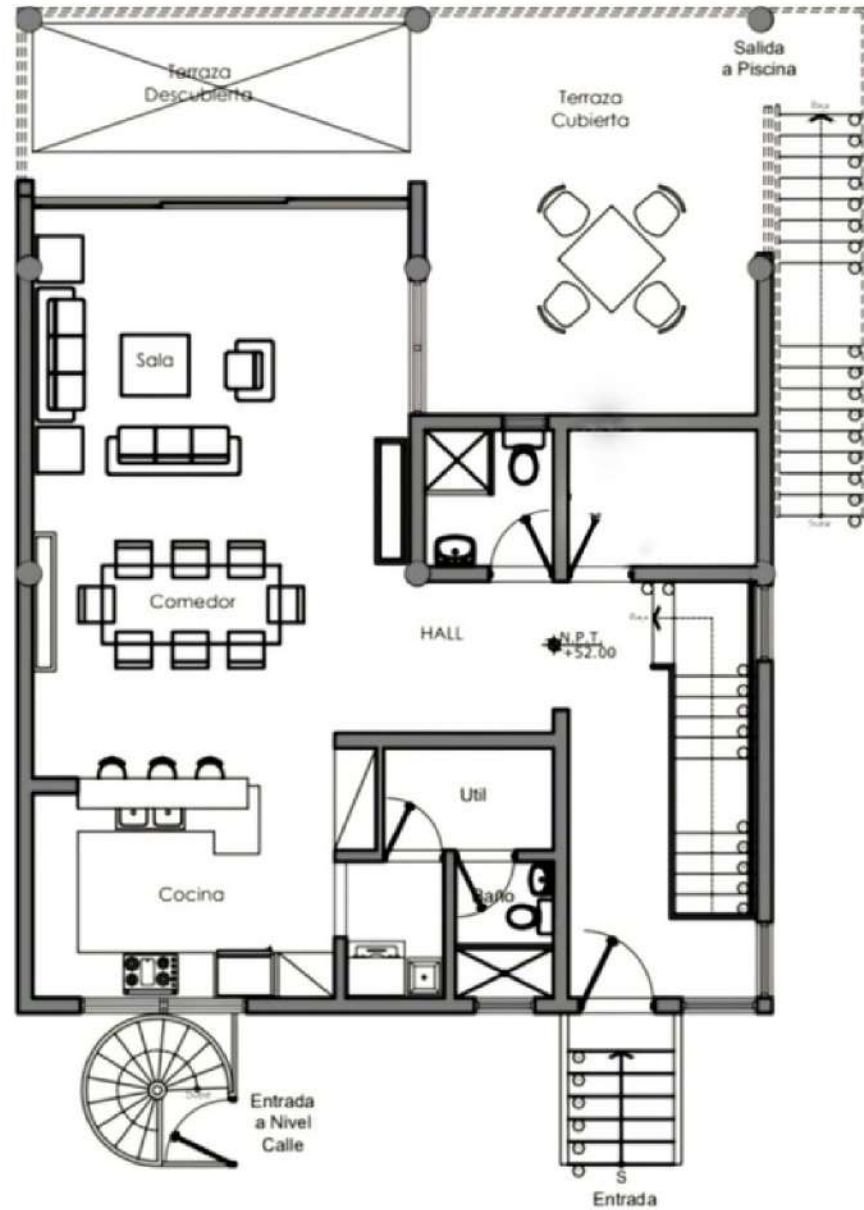
LIVING SPACE 1098 ft²
COVERED TERRACE 323 ft²



LEVEL -1 PLAN VILLA 5

LIVING SPACE 1432 ft²

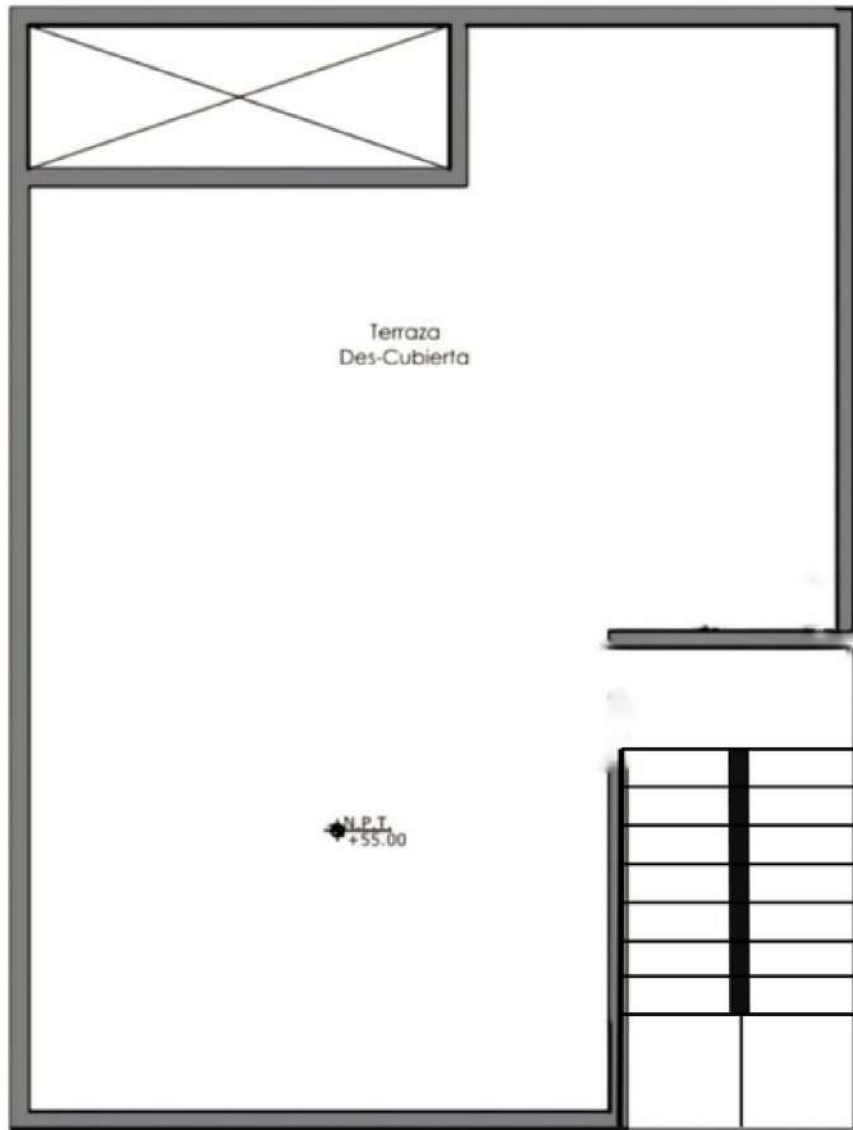




MAIN LEVEL PLAN VILLA 5

LIVING SPACE 958 ft²
 COVERED TERRACE 248 ft²
 DISCOVERED TERRACE 129 ft²

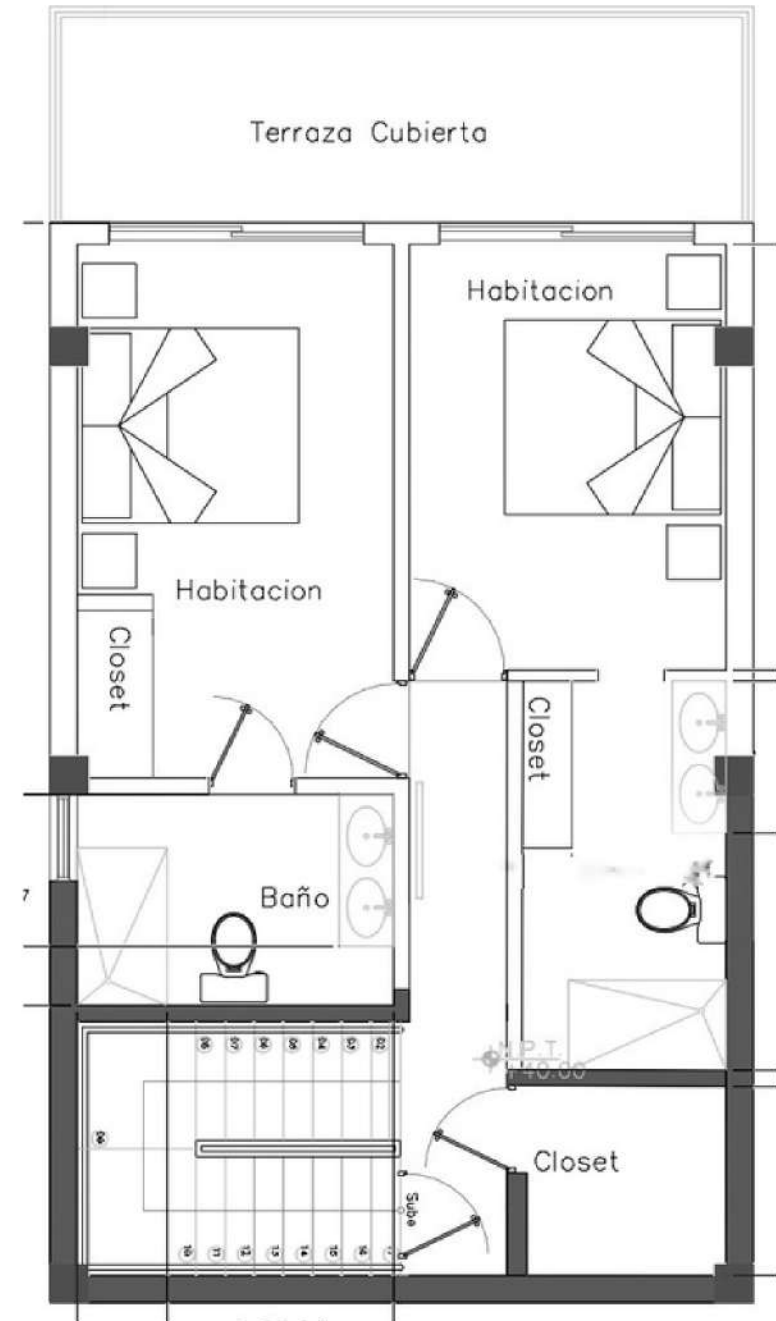




LEVEL -1 PLAN VILLA 11

3186 ft²

LIVING SPACE 710 ft²
COVERED TERRACE 140 ft²



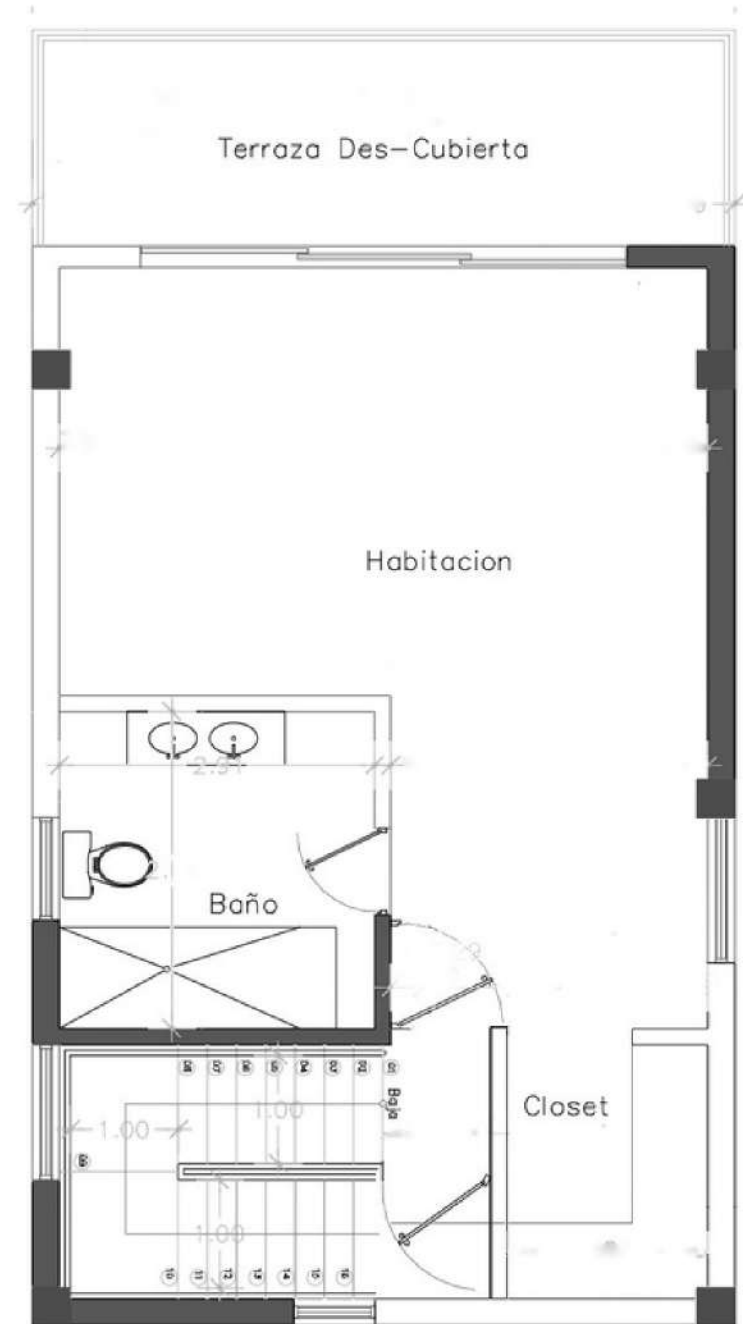
MAIN LEVEL PLAN VILLA 11

LIVING SPACE 603 ft²
COVERED TERRACE 269 ft²



LEVEL +1 PLAN VILLA 11

LIVING SPACE 614 ft²
COVERED TERRACE 151 ft²



ROOFTOP PLAN VILLA 11

DISCOVERED TERRACE 646 ft²



COMMON PARTS

The residence is monitored 24/7, and has a generator to compensate for any power outage.

We also provide maintenance of gardens, swimming pools, and management of common areas such as security, trash collection, electricity and water for common area.

ESTIMATED MONTHLY FEES

Villas 1,2,3,4,7,8,9 and 10 :	350 \$
Villas 5 and 6 :	485 \$
Villa 11 :	275 \$



PAYMENT *

RESERVE YOUR UNIT WITH
US \$ 20,000

FIRST PAYMENT 30 DAYS MAX AFTER THE
SIGNING OF THE CONTRACT
30%

SECOND PAYMENT FOR WALL BUILDING
UNTIL ROOFTOP
40%

THIRD PAYMENT FOR CARPINTRY,
ELECTRICITY, PLUMBING AND FINISHES
20%

FINAL PAYMENT AT THE DELIVERY
OF YOUR VILLA
10%

* flexible on request

