

EL CAY BEACHFRONT DEVELOPMENT FOR SALE





BEACHTOWN

PROPERTY

R E A L E S T A T E

Beachtown Property Real Estate

- Douglas Barker



- Helen Mitchell



Beachtown Property Real Estate Contact Information

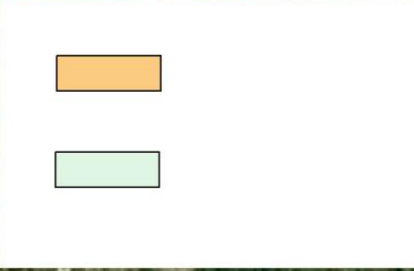
- Info@beachtownproperty.com
- Office: **1-809-240-9699**
- Douglas **1-829-436-3912**
- Helen **1-849-352 0070**
- **Office Address:**
- **Plaza Colonial, 127 Nuestra Señora Del Carmen Street**
- **Las Terrenas, Samana 32000**
- **Dominican Republic**





946.019,52 m²





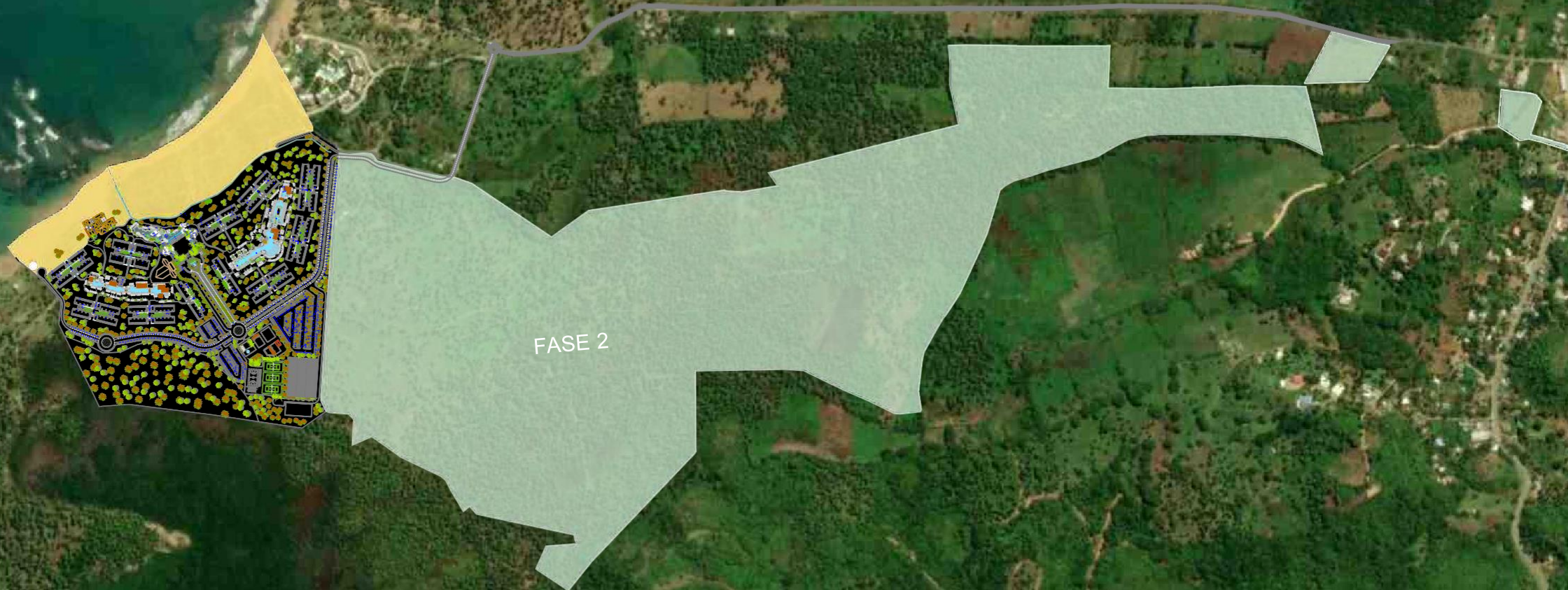
LEYENDA

- 1 Entrada principal
- 2 Entrada de servicio
- 3 Carretera pública
- 4 Arroyo
- 5 Playa
- 6 Edificio existente/Existing building
- 7 Espacio Libre Verde/ Green Area
- 8 Avenida /Avenue
- 9 Lago/Lake
- 10 Hotel 5 *
- 11 Condohotel
- 12 Beach Club
- 13 Zona deportiva/Sport area
- 14 Hotel 2
- 15 Parking
- 16 Golf
- 17 Condohotel y Villas Golf
- 18 Zona de Servicio/Service Area



Planeamiento	Fase 1	Fase 2
* Parcela.....946.019,52 m ² .	- 5 * Hotel 150 uds.	- 5 * Hotel 2700 uds.
* Frente playa..... 600m/l.	Estándar Plus..... 42 hab.	- Apartamentos y Villas Golf
* Altura..... 2 plantas frente litoral	Suite Premium..... 8 hab.	14 Bloques de apartamentos 1,2,3 habitaciones
4 plantas posterior litoral	- Condohotel251 uds.	45 Villas de 1,2,3 habitaciones
* Densidad.....50 hab/ha	110 Condohotel 1 dormitorio.....110 dor.	
* Ocupación máxima suelo..... 50%	127 Condohotel 2 dormitorios.....254 dor.	
* Techos inclinados..... 40% sup.	14 Condohotel 3 dormitorios..... 42 dor.	
	TOTAL.....406 dor.	





FASE 2





- LEYENDA**
- 1 Entrada Principal
 - 2 Arroyo
 - 3 Parking
 - 4 Supermercado
 - 5 Multilocal
 - 6 Bar- Restaurante disco
 - 7 Zona Deportiva
 - 8 Parque Infantil
 - 9 Placas Fotovoltaica
 - 10 Edificios Instalaciones
 - 11 Lobby/ Buffet Hotel
 - 12 Habitaciones Hotel
 - 13 Beach Club
 - 14 Playa
 - 15 Condohotel
 - 16 Zona Botánico
 - 17 Palapa Actividades Náuticas

- FASE 1
- FASE 2

EDIFICIO/TIPO	CONDOHOTEL						TOTAL
	CONDOHOTEL A (1 D)		CONDOHOTEL B (2 D)		CONDOHOTEL C (3 D)		
	A	A1	B	B1	C	C1	
BLOQUE A	4	8	36	2	2	2	54
BLOQUE B	4	8	36	2	2	2	54
BLOQUE C	4	8	36	2	2	2	54
BLOQUE D	4	8	36	2	2	2	54
BLOQUE E	4	8	36	2	2	2	54
BLOQUE F	13		6	6	2	4	31
BLOQUE G	13		6	6	2	4	31
BLOQUE H	10		4	4	2	4	24
BLOQUE I	3	4	16		2		25
BLOQUE J	3	4	16		2		25
TOTAL	62	48	228	26	20	22	406

HABITACIONES	HOTEL		
	STANDAR PLUS	SUITE PREMIUN	TOTAL
HOTEL 5*	42	8	50





Beachtownproperty.com©

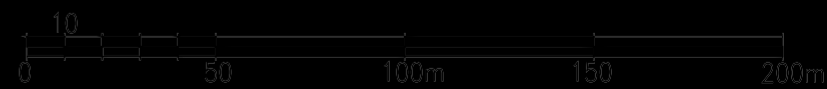


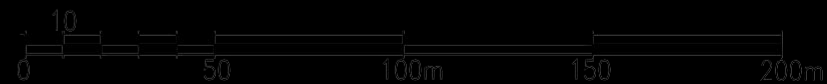
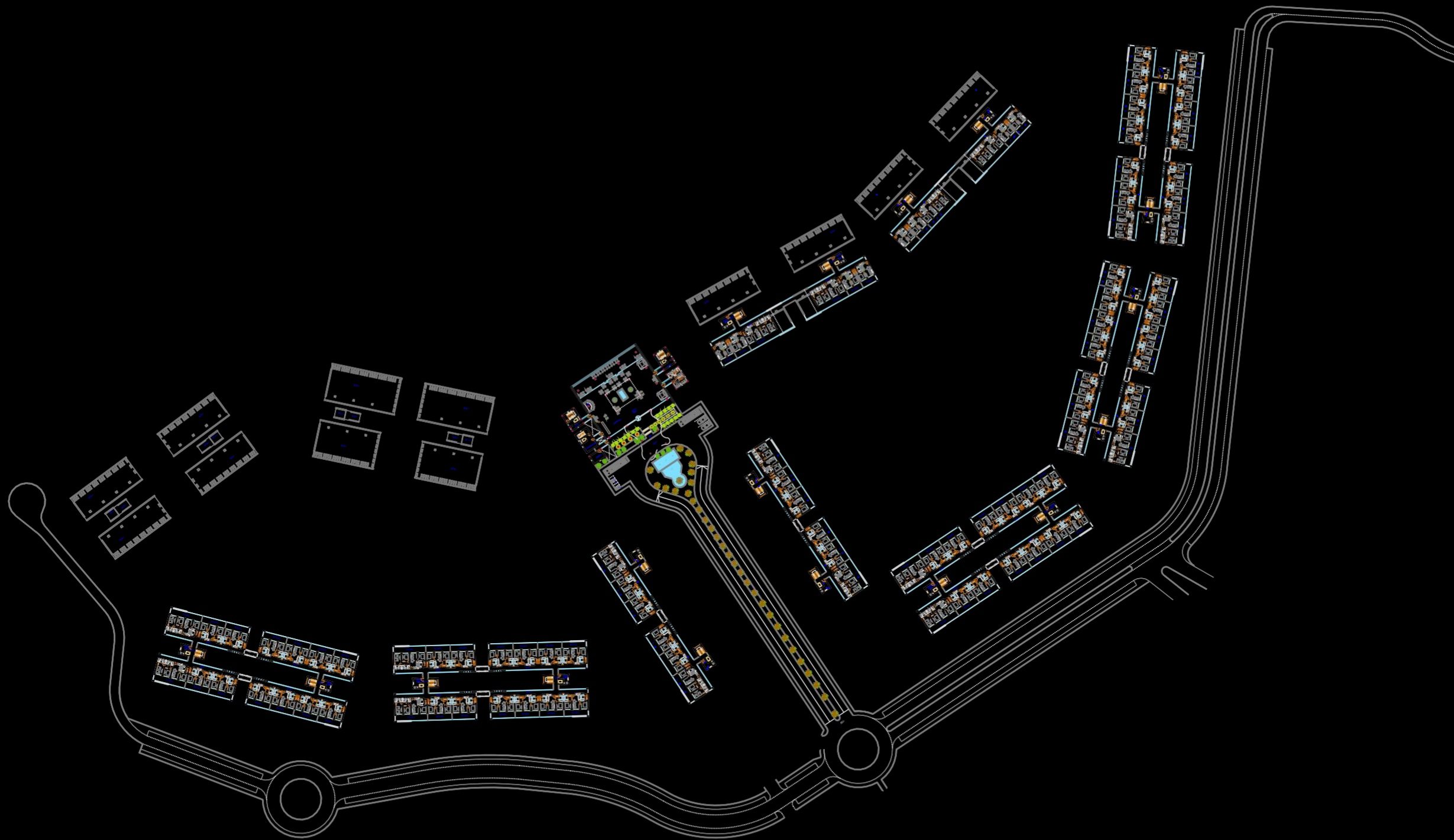


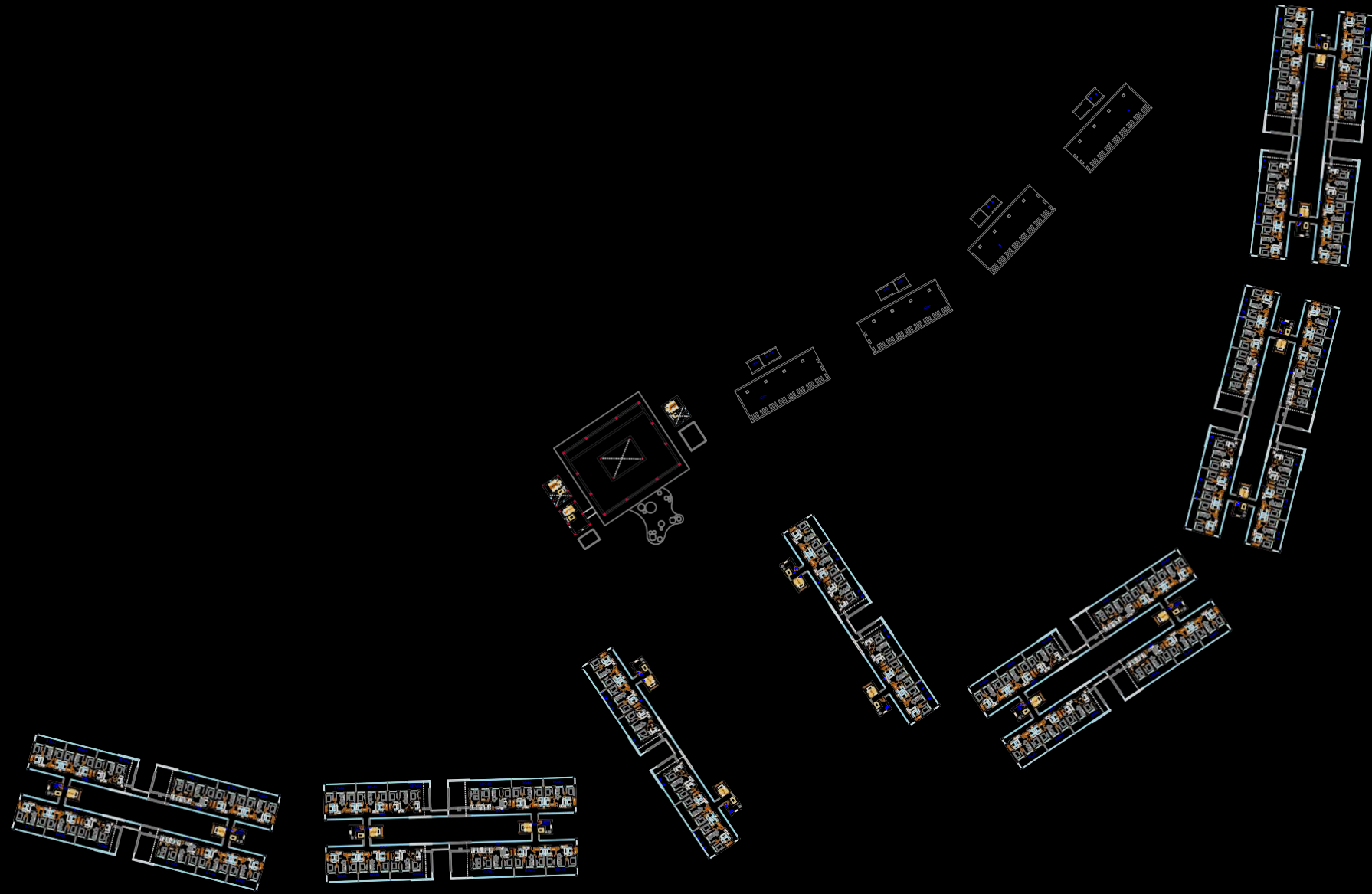


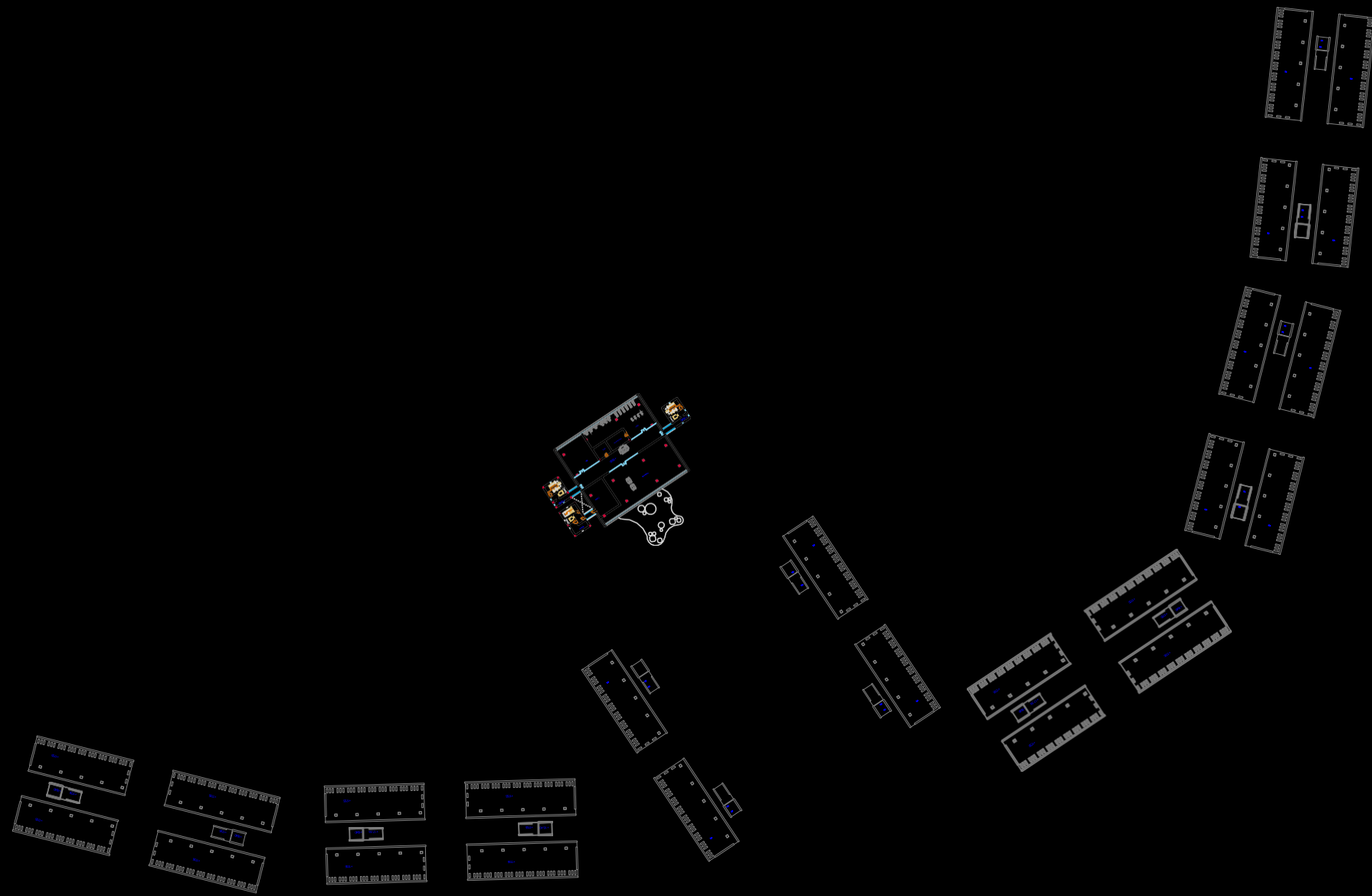
El Cay Video
see this link
VIDEO

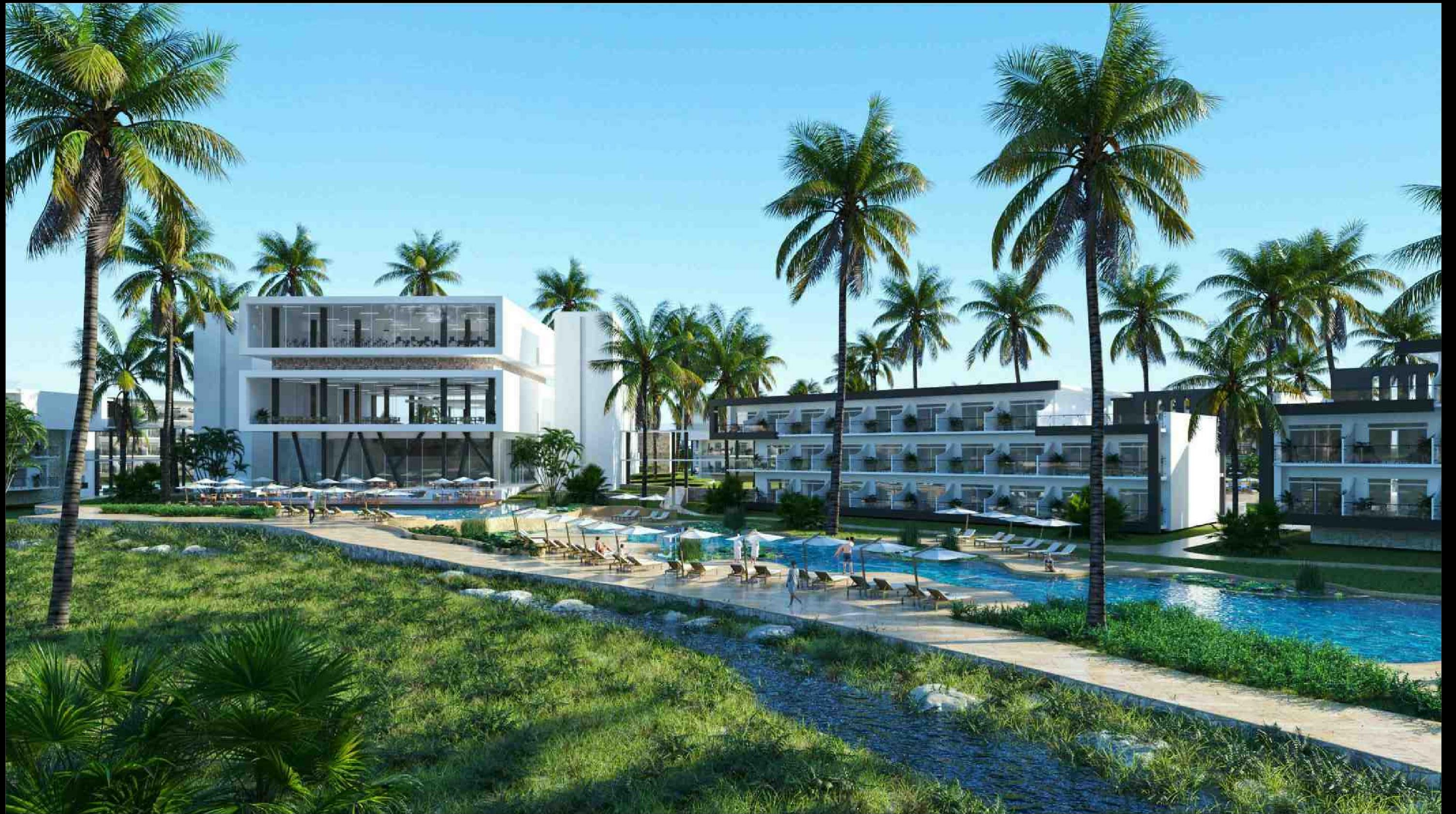






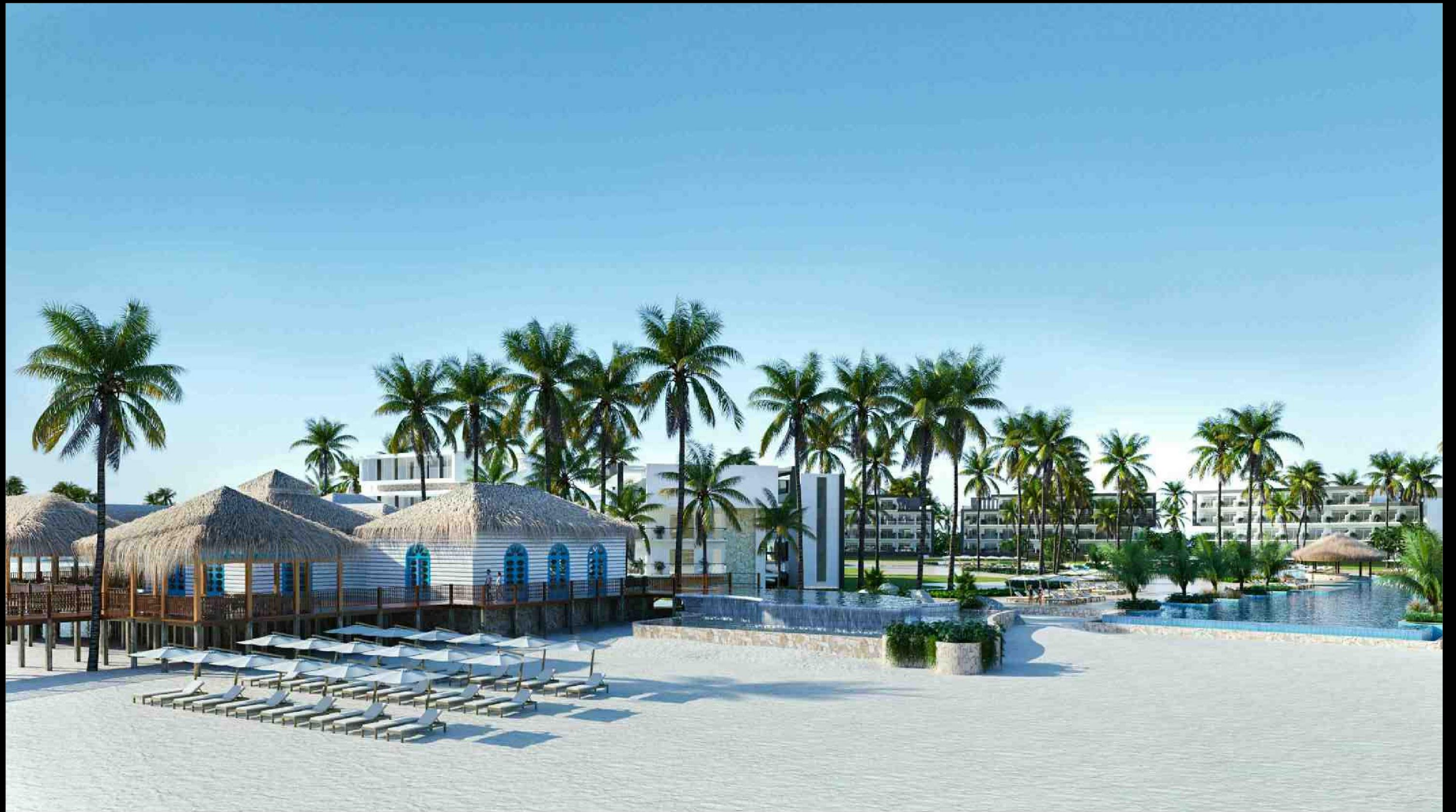


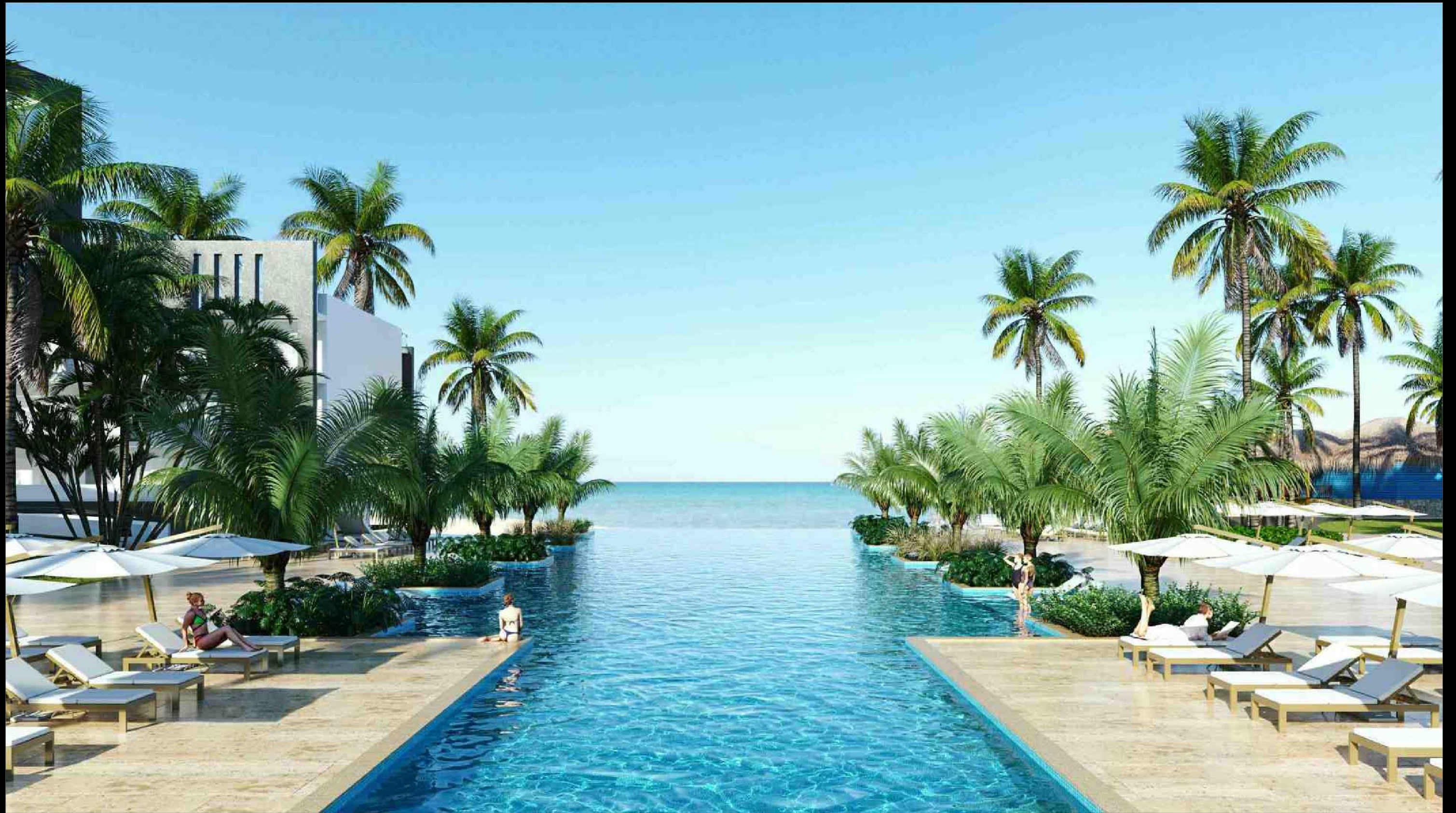


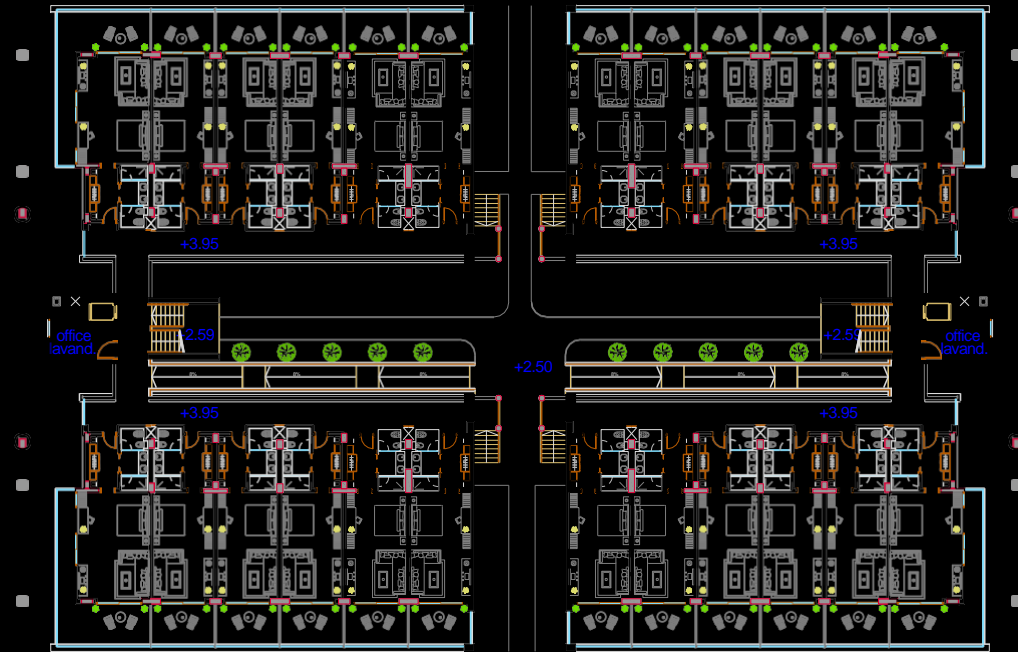




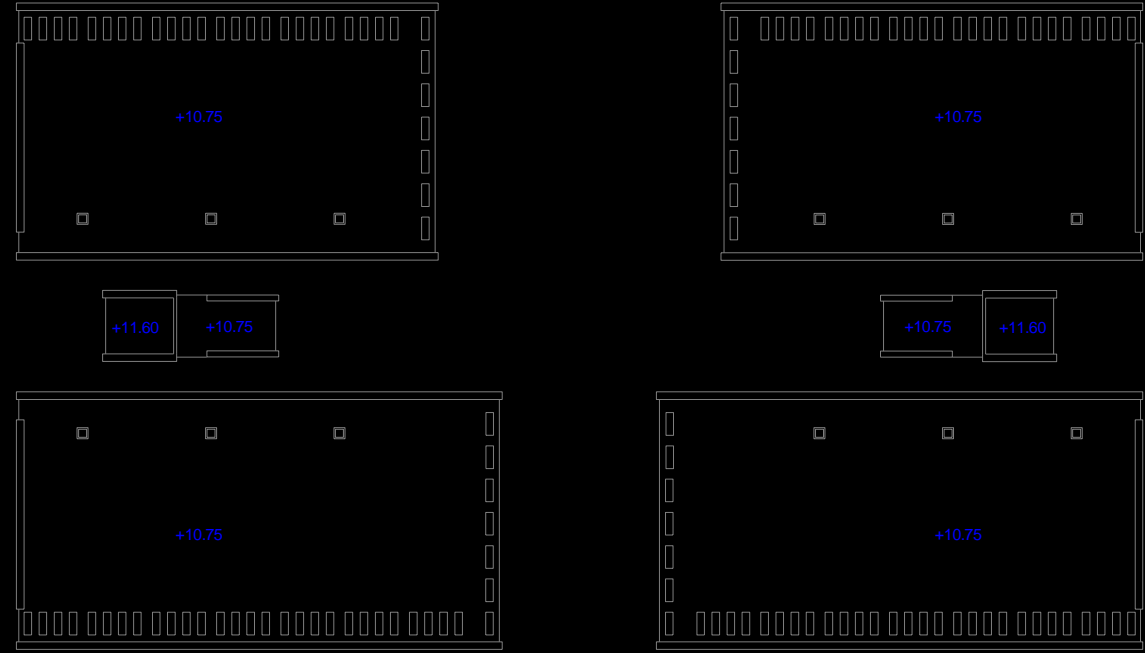




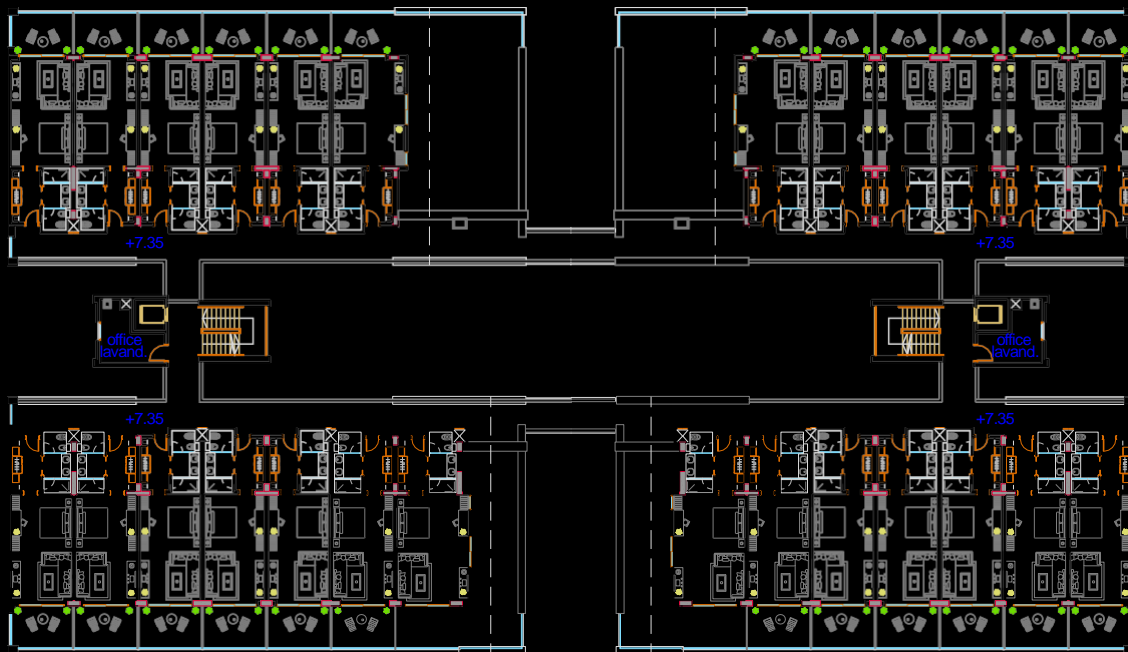




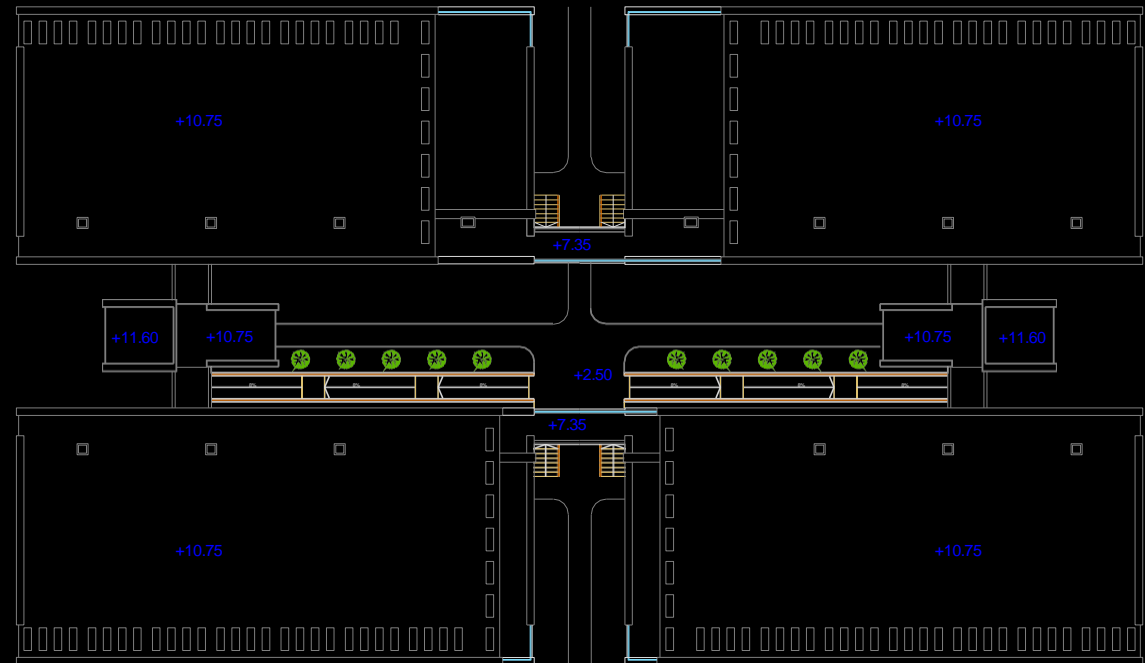
NIVEL 1



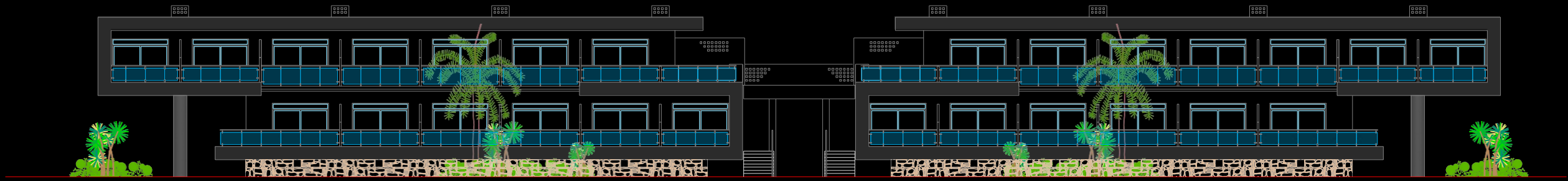
CUBIERTA



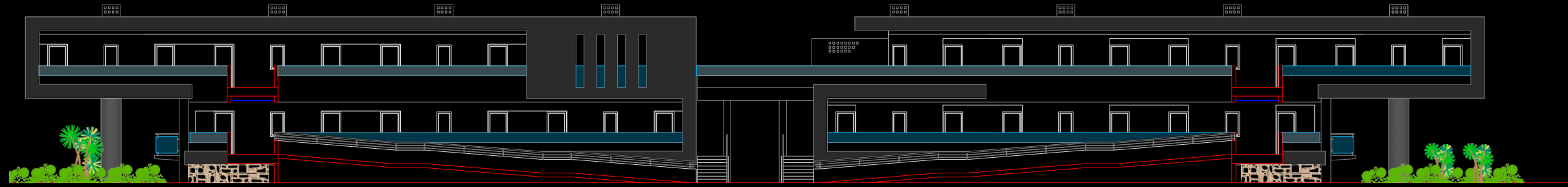
NIVEL 2



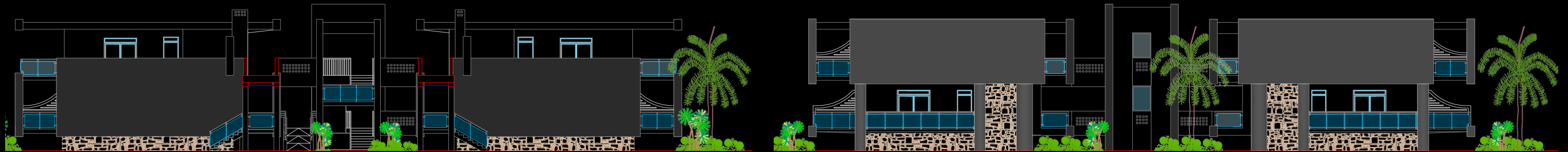
CUBIERTA GENERAL DEL BLOQUE DE EDIFICIOS HOTEL



ALZADO 1

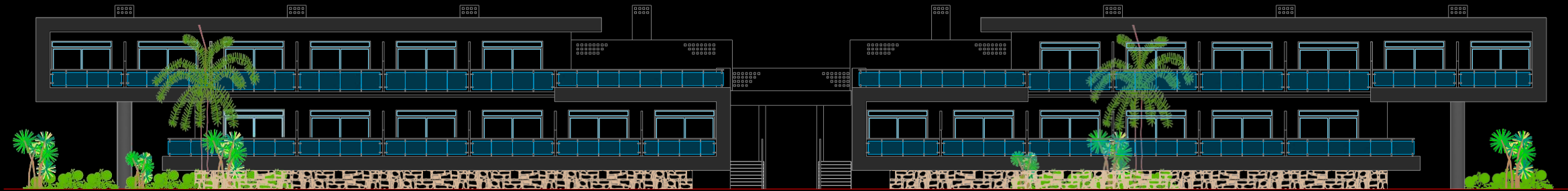


ALZADO 2

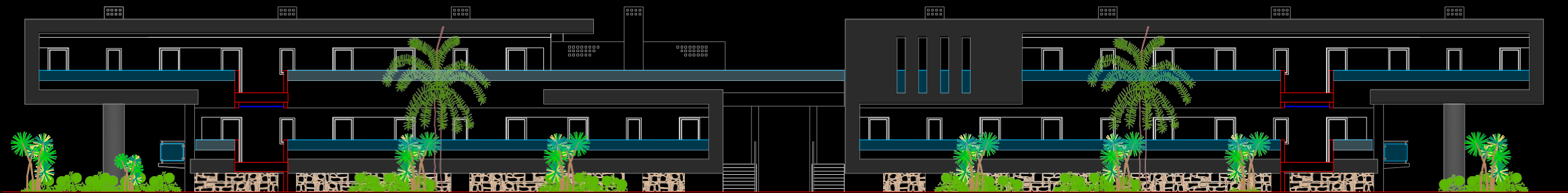


ALZADO 4

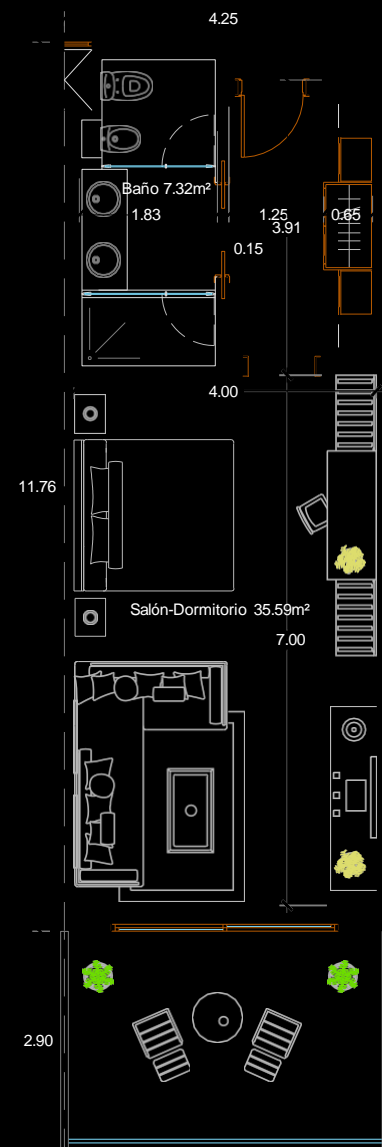
ALZADO 3



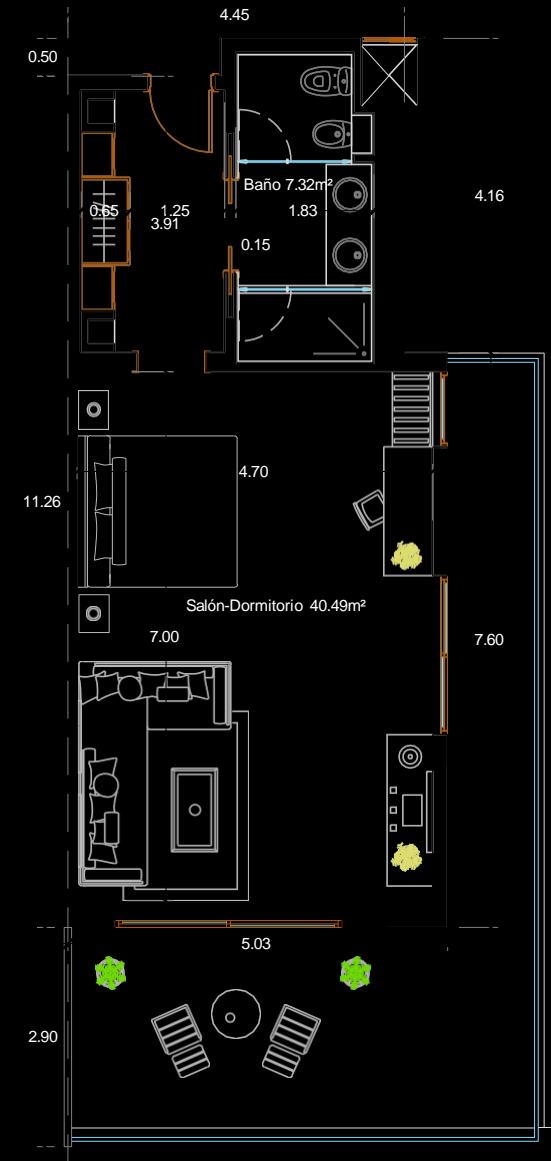
ALZADO 5



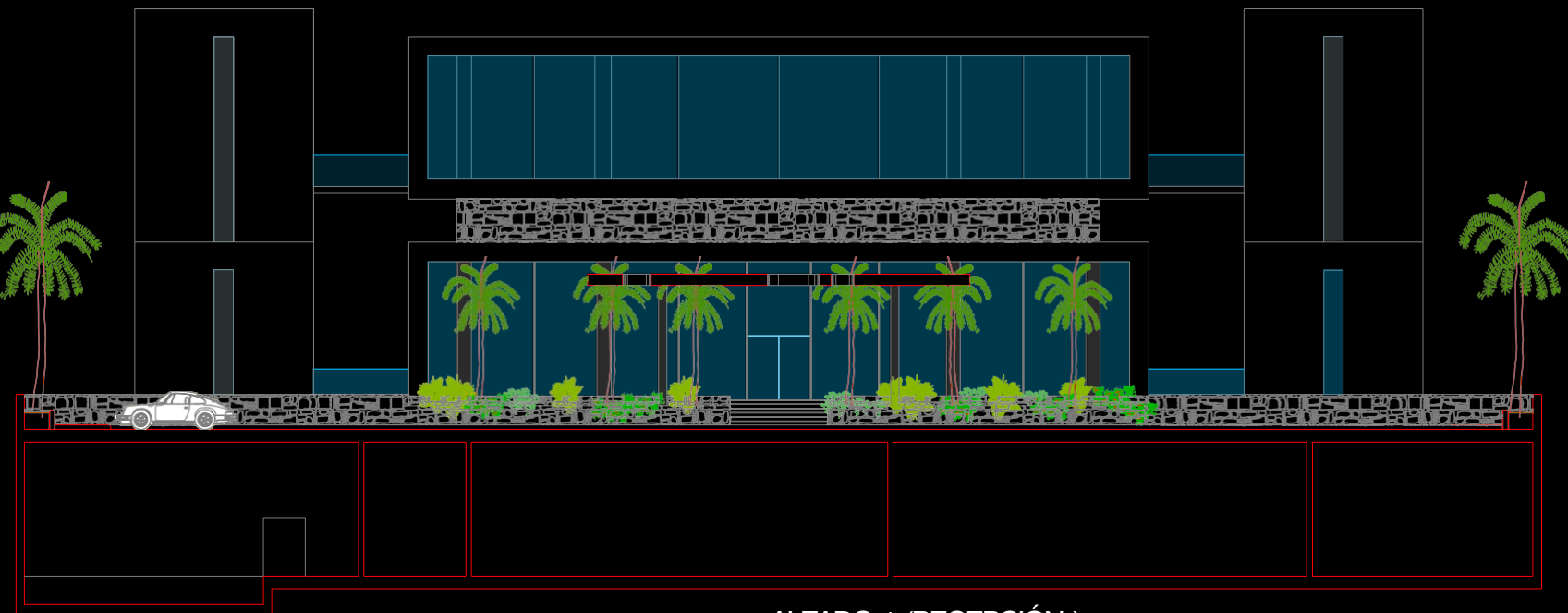
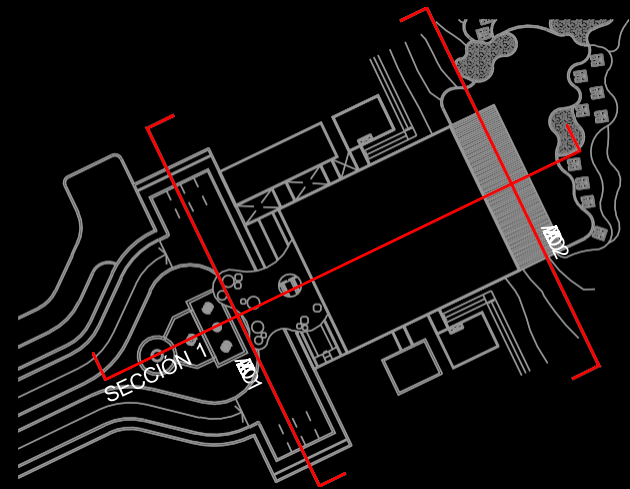
ALZADO 6



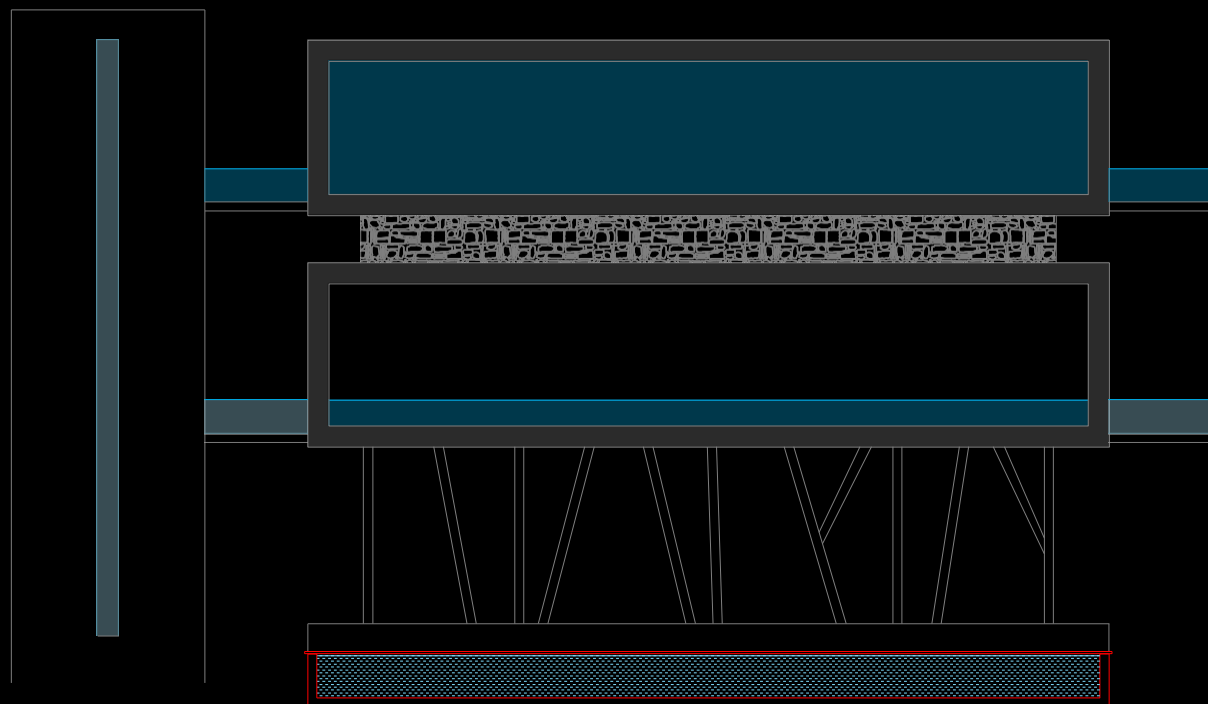
Habitación Estandar Plus
 Sup. Construida Hab. 48.64m²
 Sup. Construida Terraza. 12.32



Habitación Suite Premium
 Sup. Construida Hab. 55.18m²
 Sup. Construida Terraza. 27.49m²



ALZADO 1 (RECEPCIÓN)

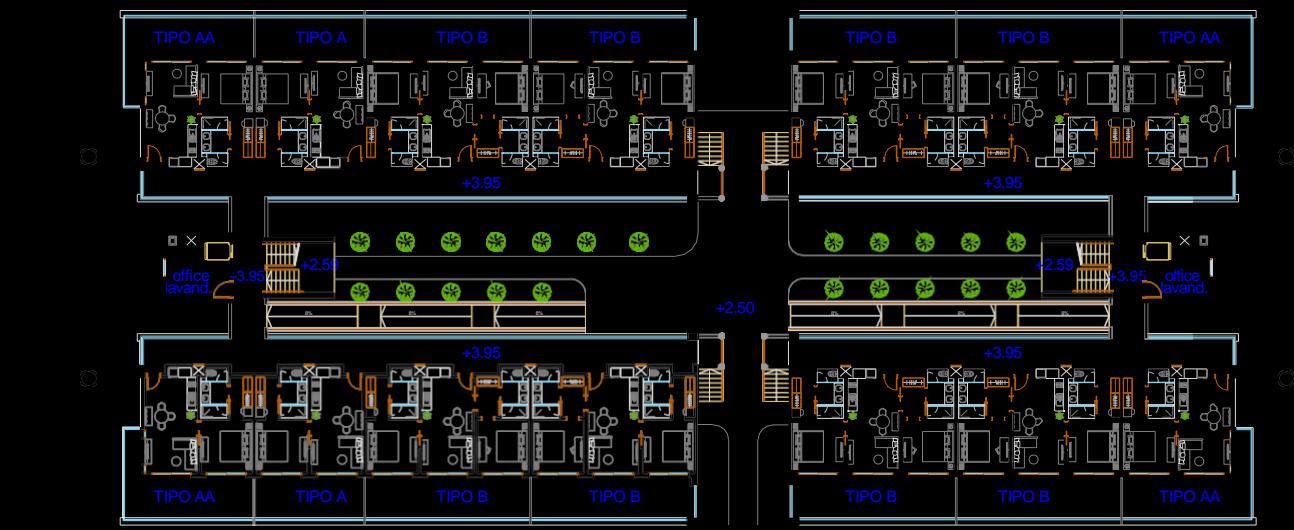


ALZADO 2 (RECEPCIÓN)

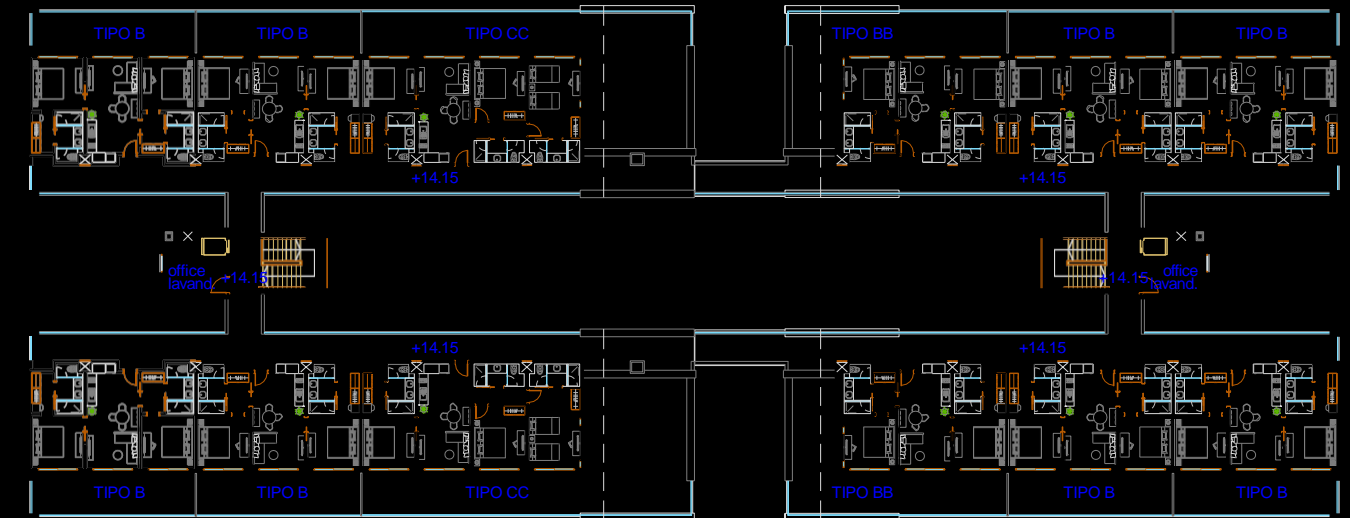


SECCIÓN 1 (RECEPCIÓN)

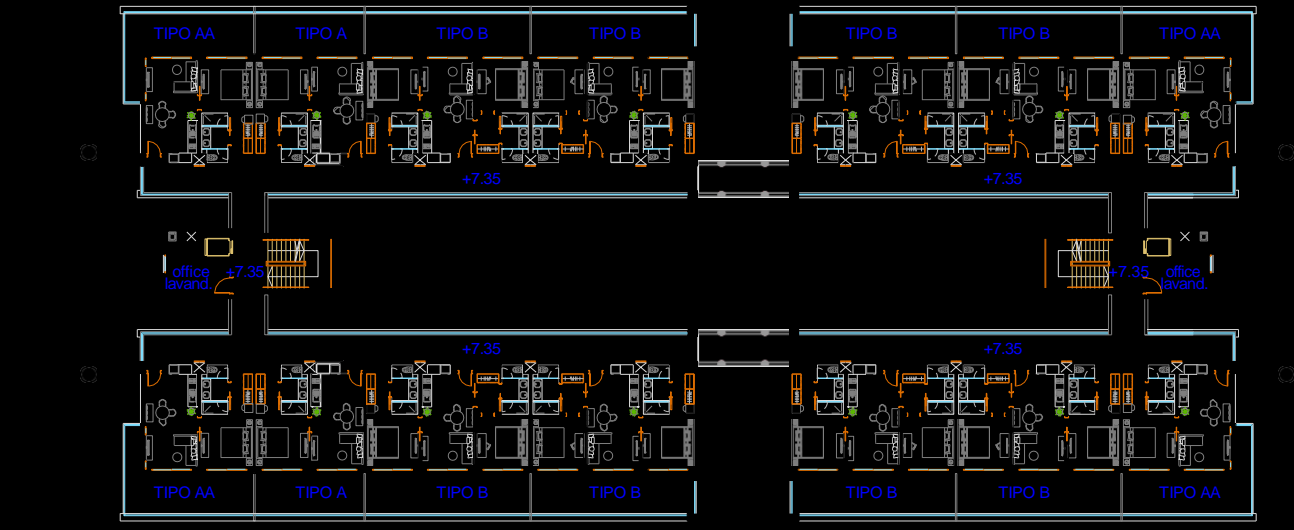
EDIFICIO TIPOLOGÍAS A-B-C-D-E



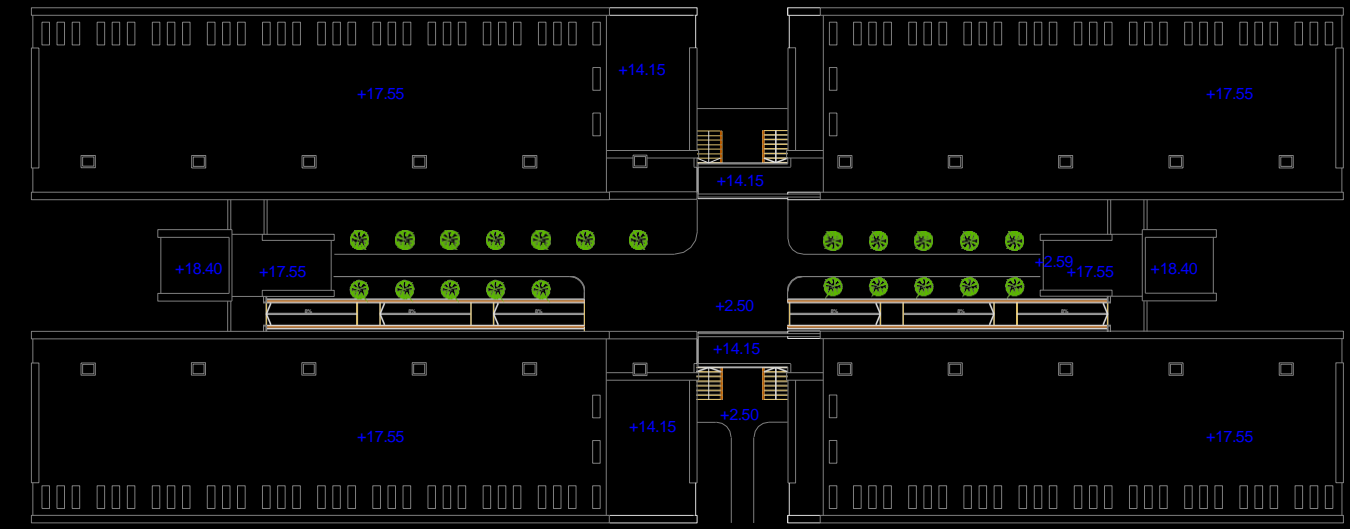
NIVEL 1



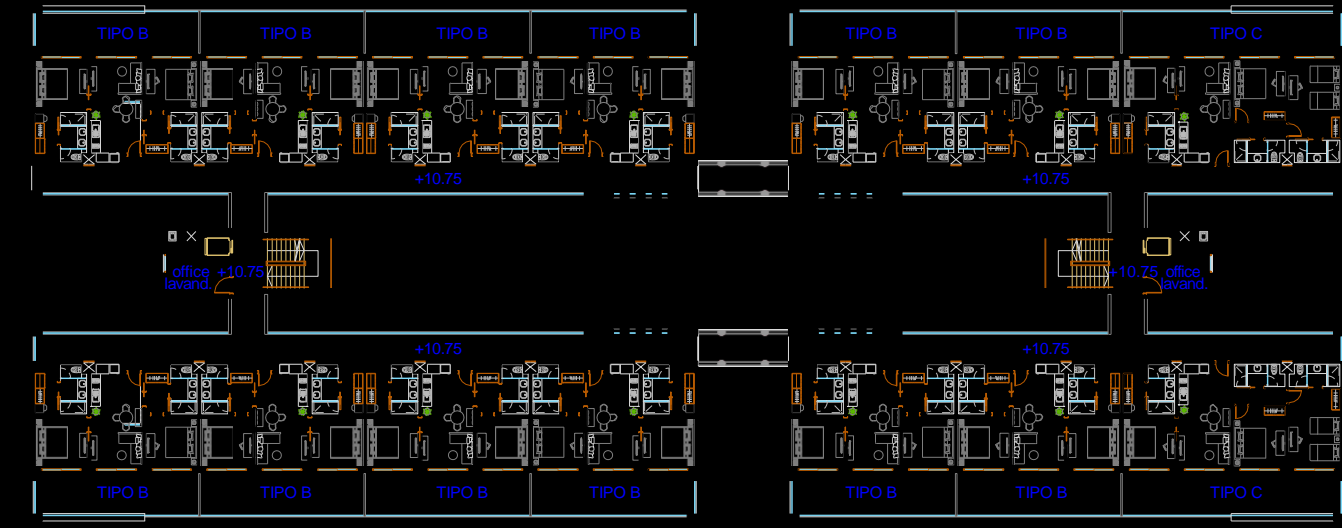
NIVEL 4



NIVEL 2

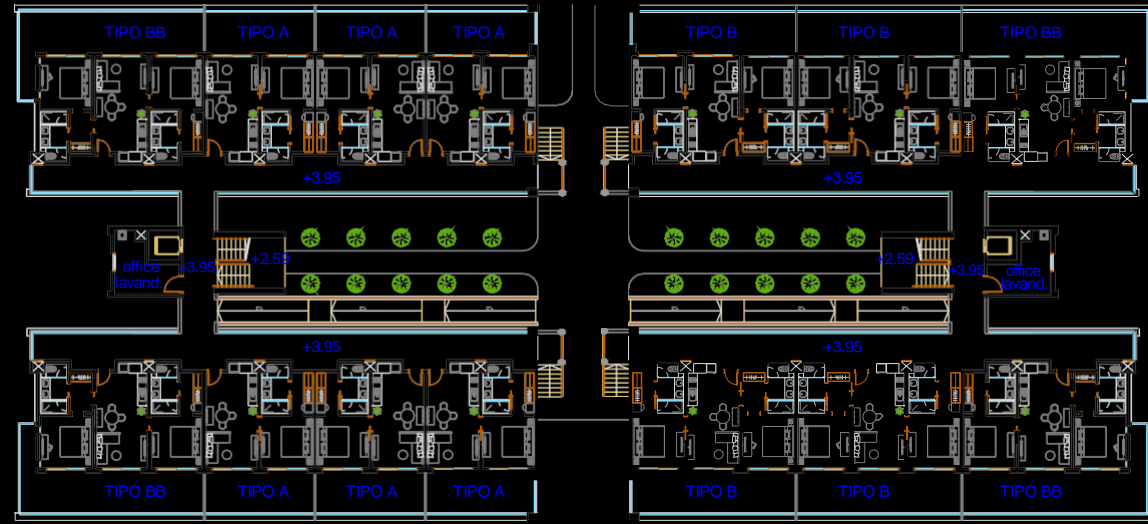


CUBIERTA GENERAL

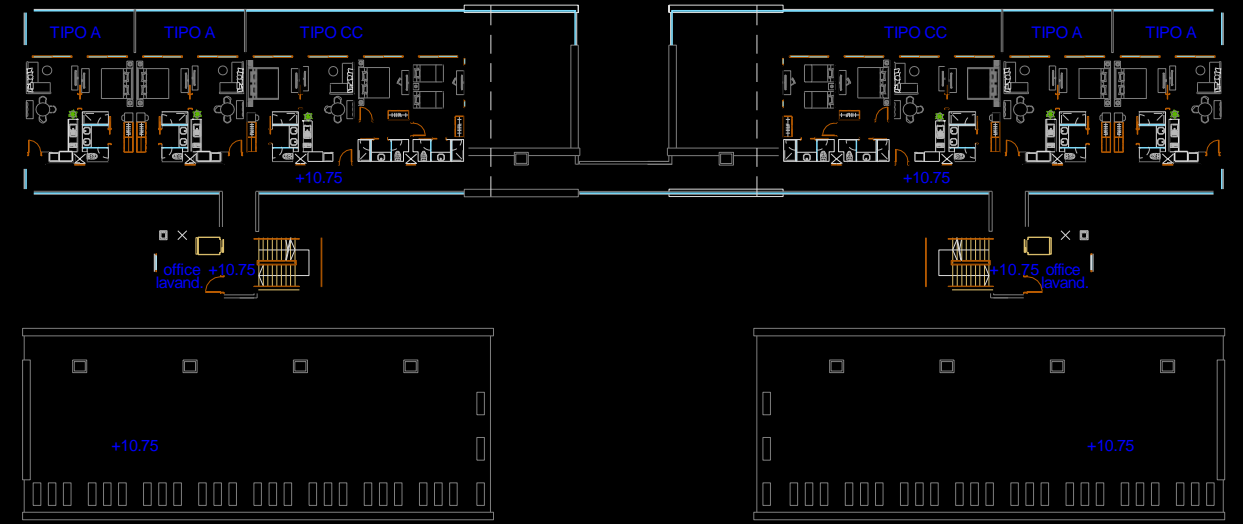


NIVEL 3

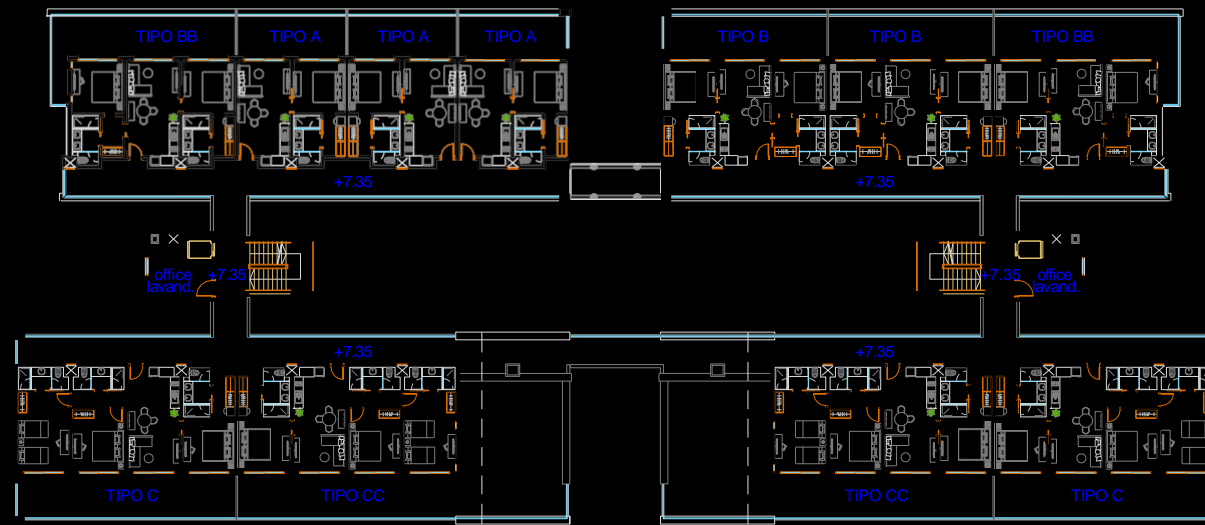
EDIFICIO TIPOLOGÍAS F-G



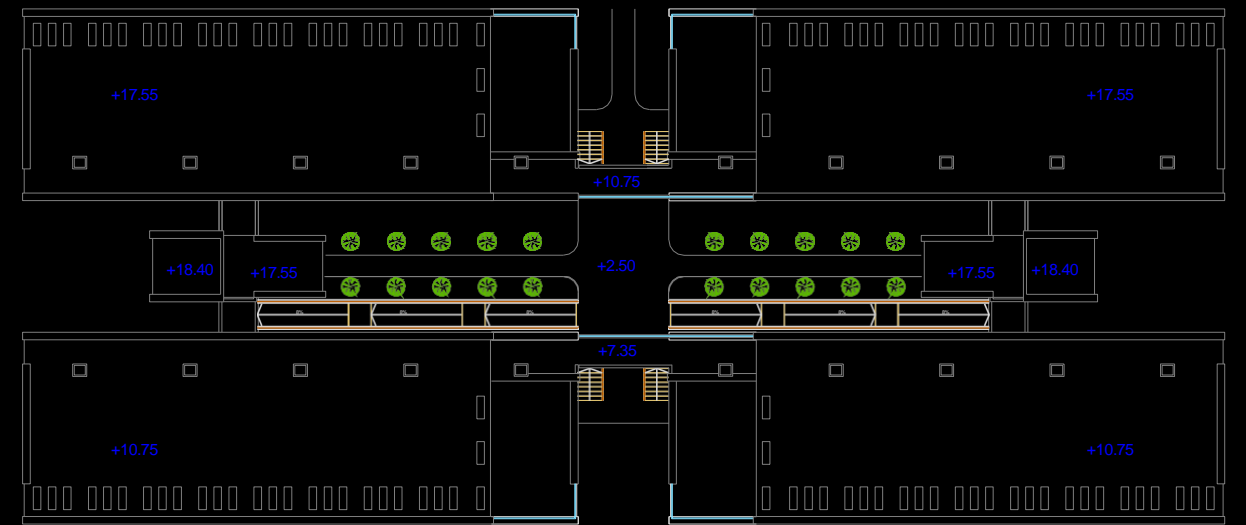
NIVEL 1



NIVEL 3

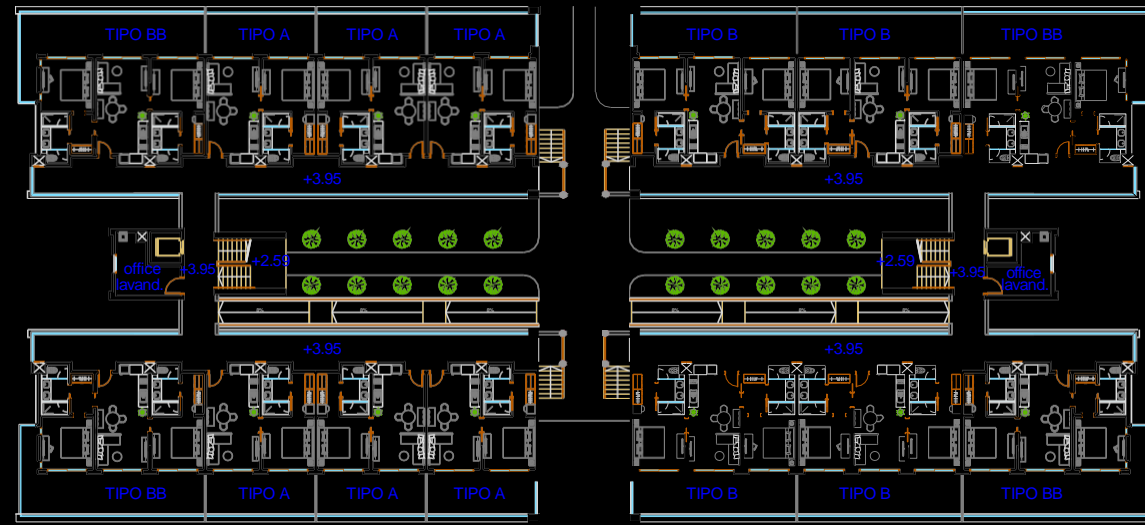


NIVEL 2

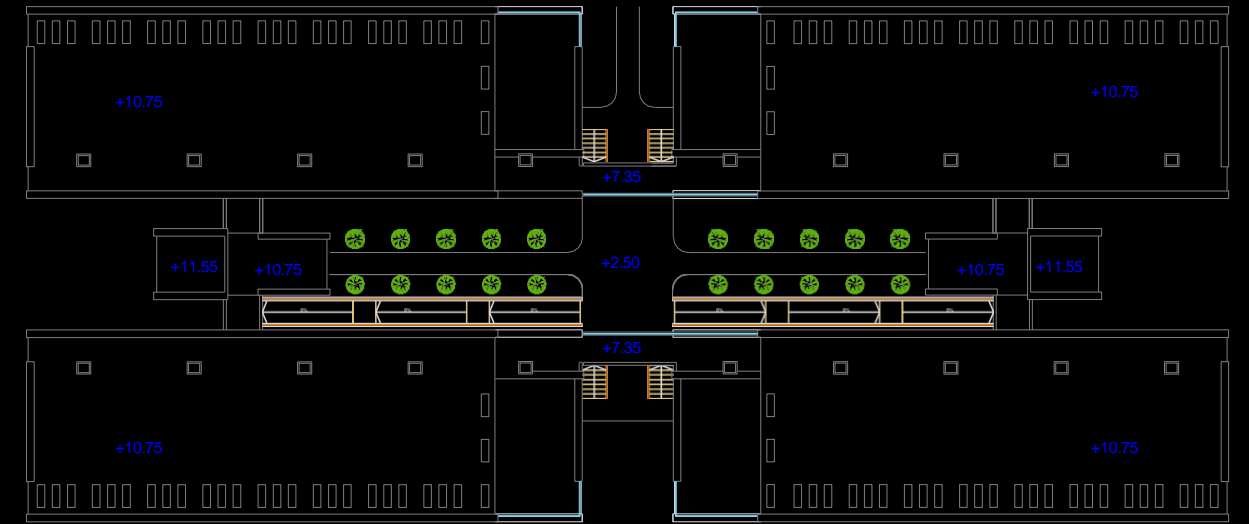


CUBIERTA GENERAL

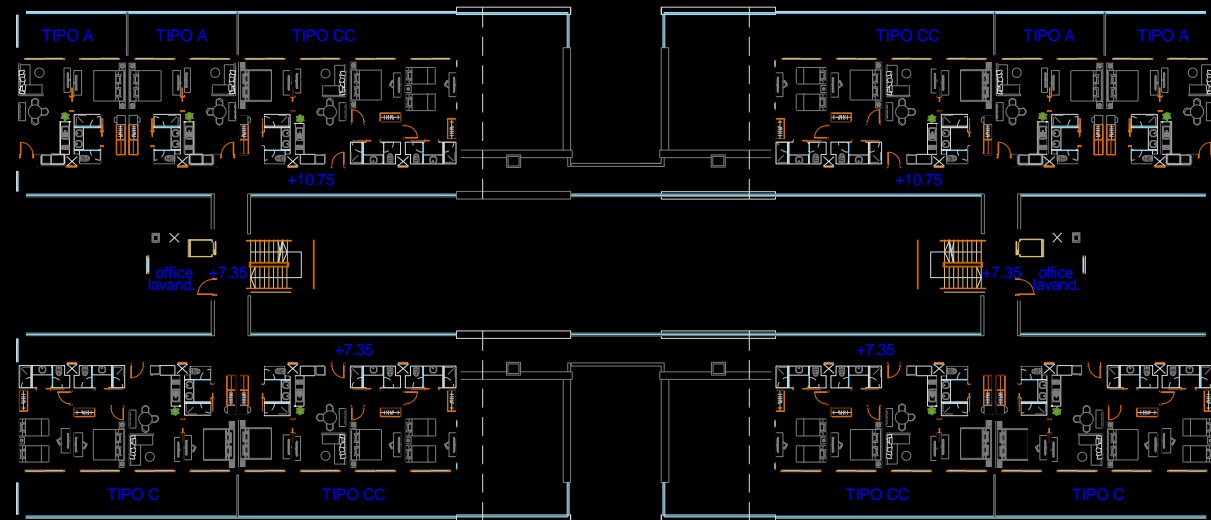
EDIFICIO TIPOLOGÍAS H



NIVEL 1

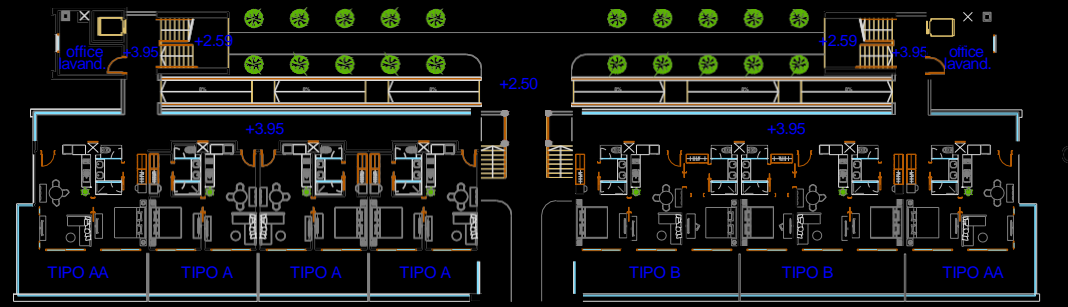


CUBIERTA GENERAL DE UN BLOQUE DE CONDOHOTEL

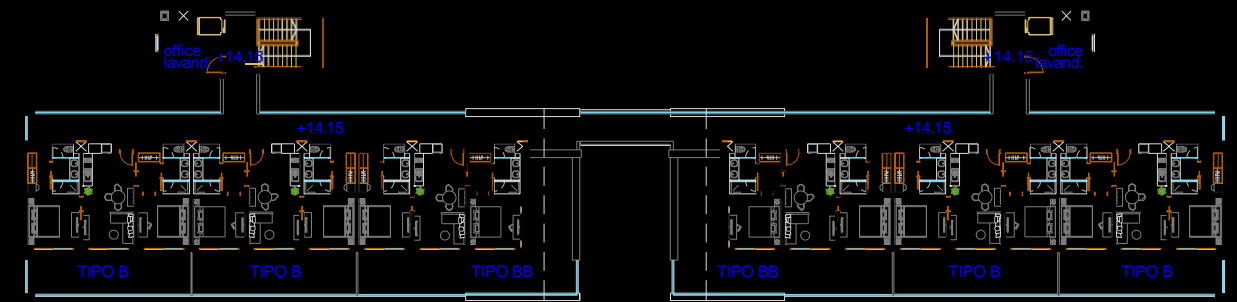


NIVEL 2

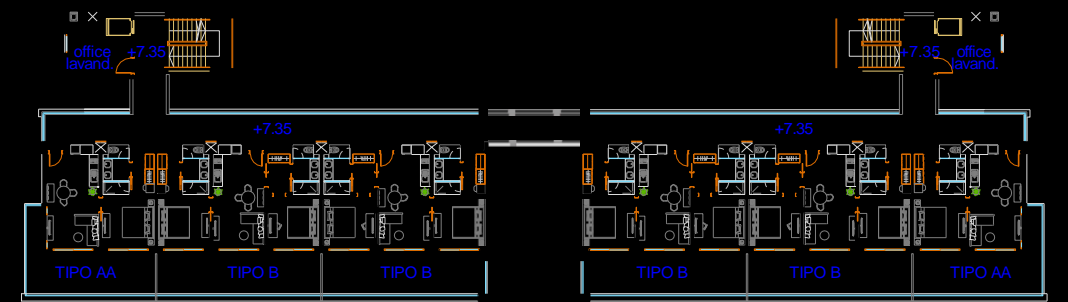
EDIFICIO TIPOLOGÍAS I-J



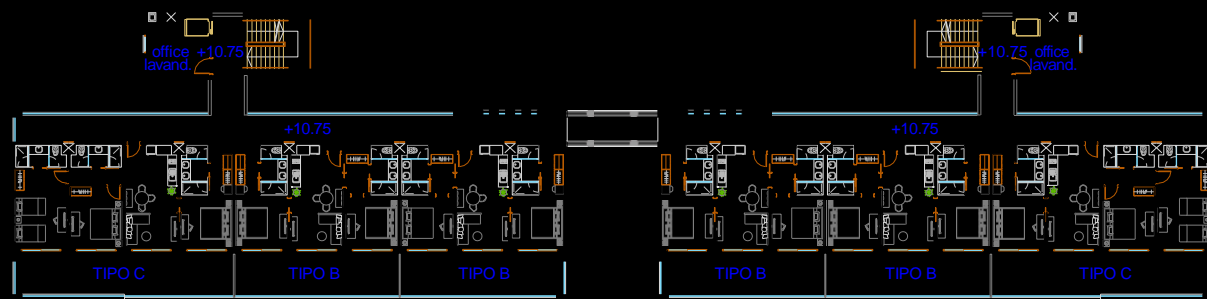
NIVEL 1



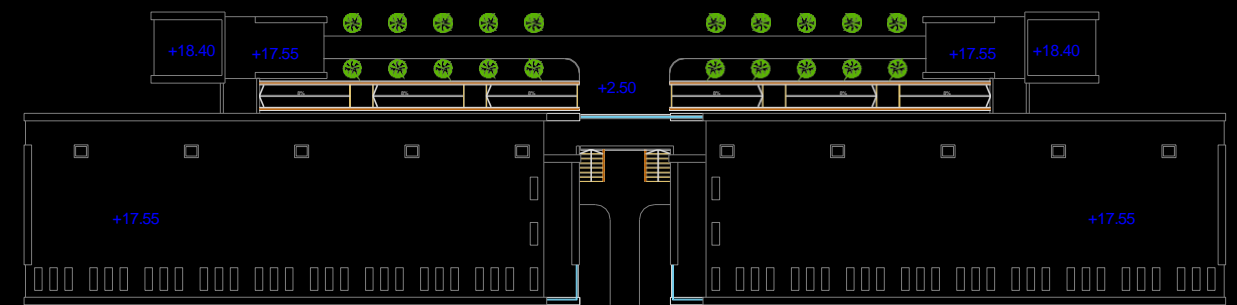
NIVEL 4



NIVEL 2



NIVEL 3



CUBIERTA GENERAL



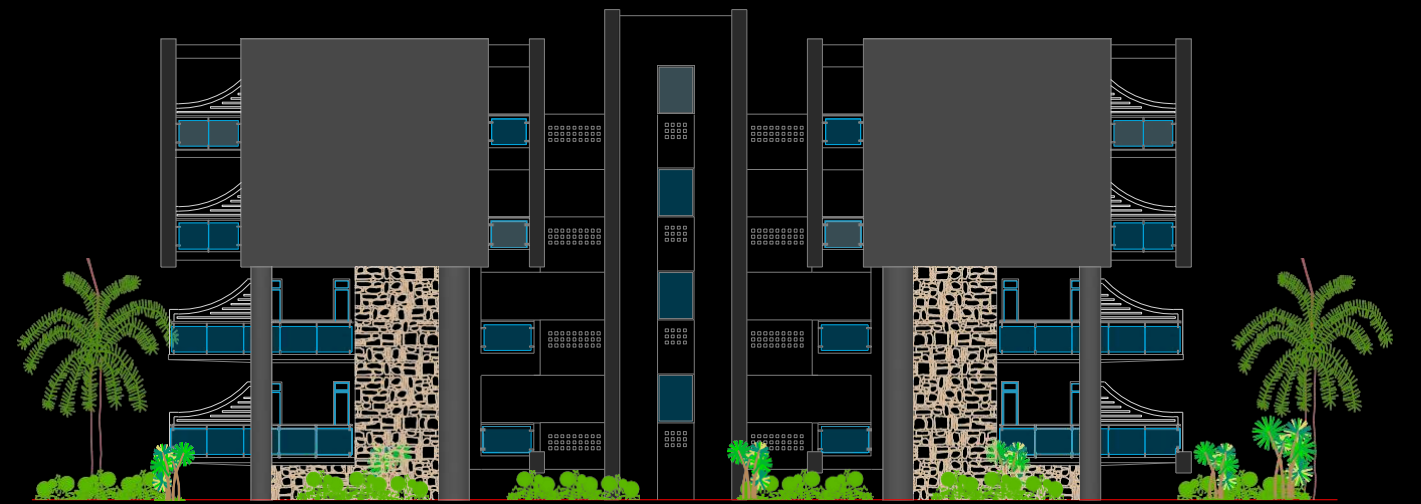
ALZADO 1 (bloque 1)



ALZADO 2 (bloque 1)



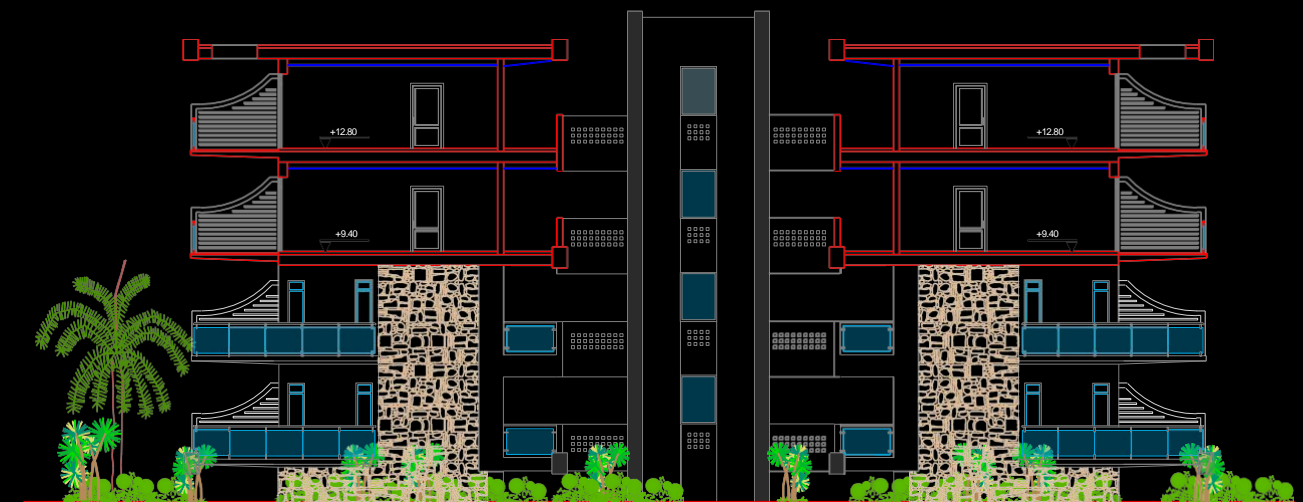
ALZADO 3 (bloque 1)



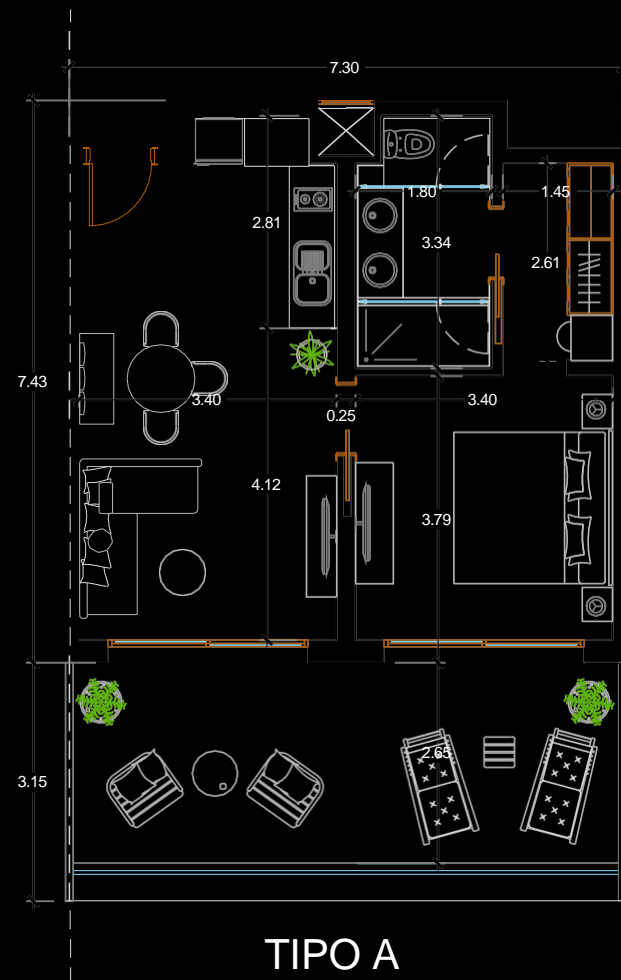
ALZADO 4 (bloque 1)



SECCION 1 (bloque 1)

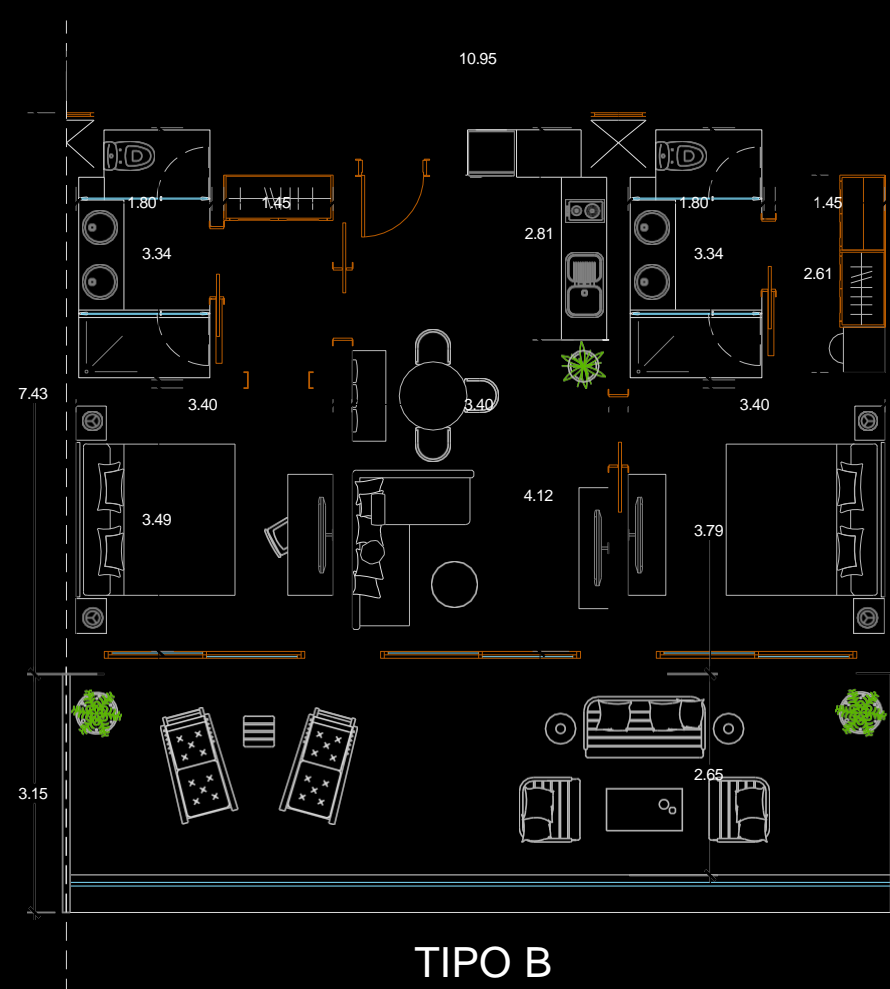


SECCION 2 (bloque 1)



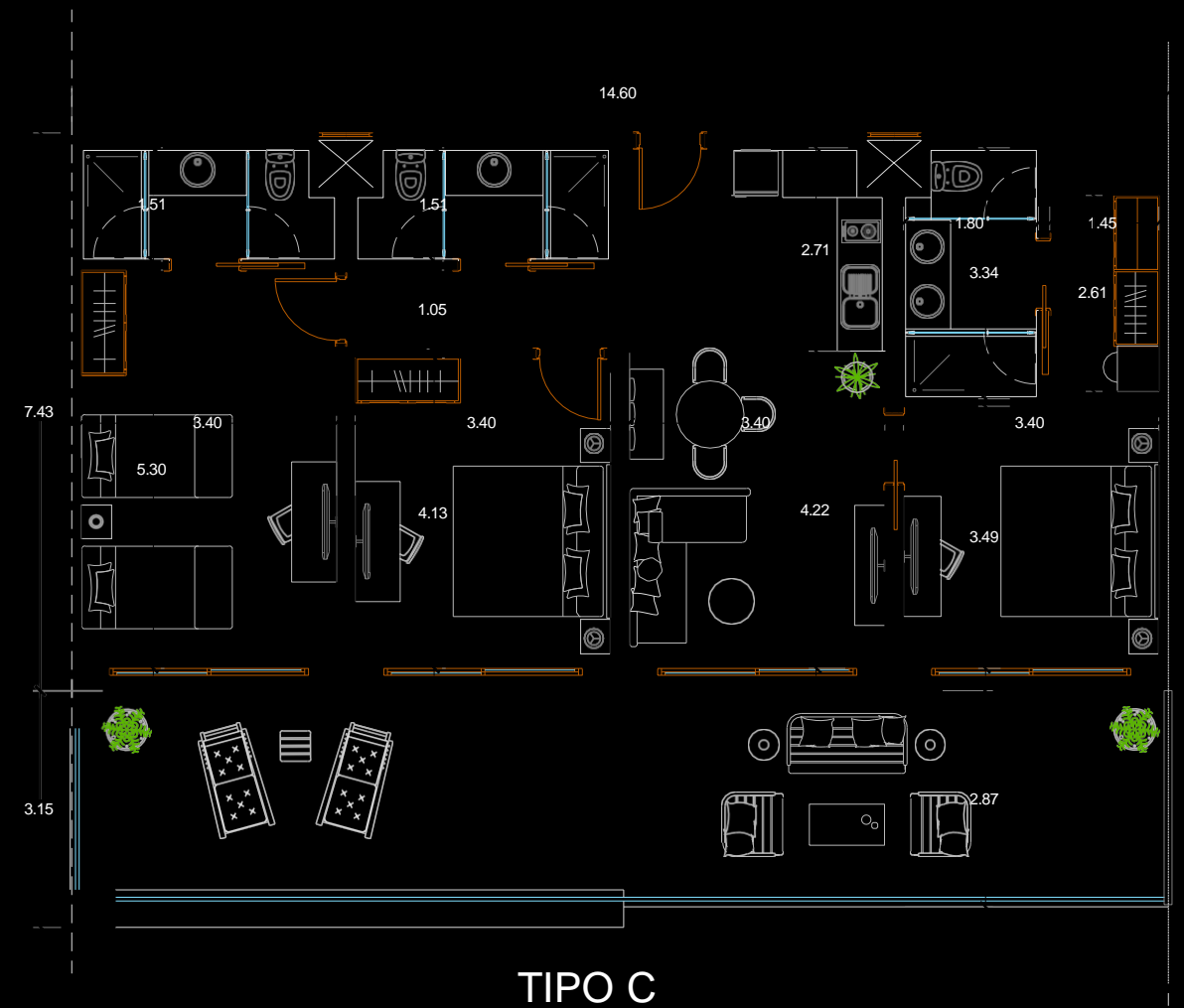
TIPO A

Condohotel Tipo A - 1 habitación
 Sup. Const. Condohotel 51.85m²
 Sup. Const. Terraza. 23.00m²



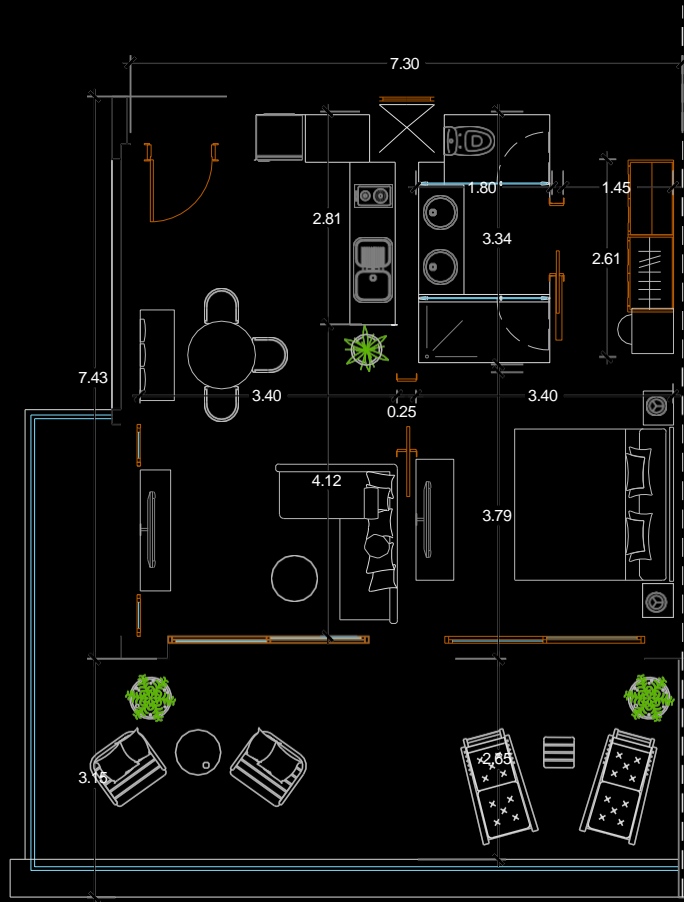
TIPO B

Condohotel Tipo B - 2 habitaciones
 Sup. Const. Condohotel 77.74m²
 Sup. Const. Terraza. 34.49m²



TIPO C

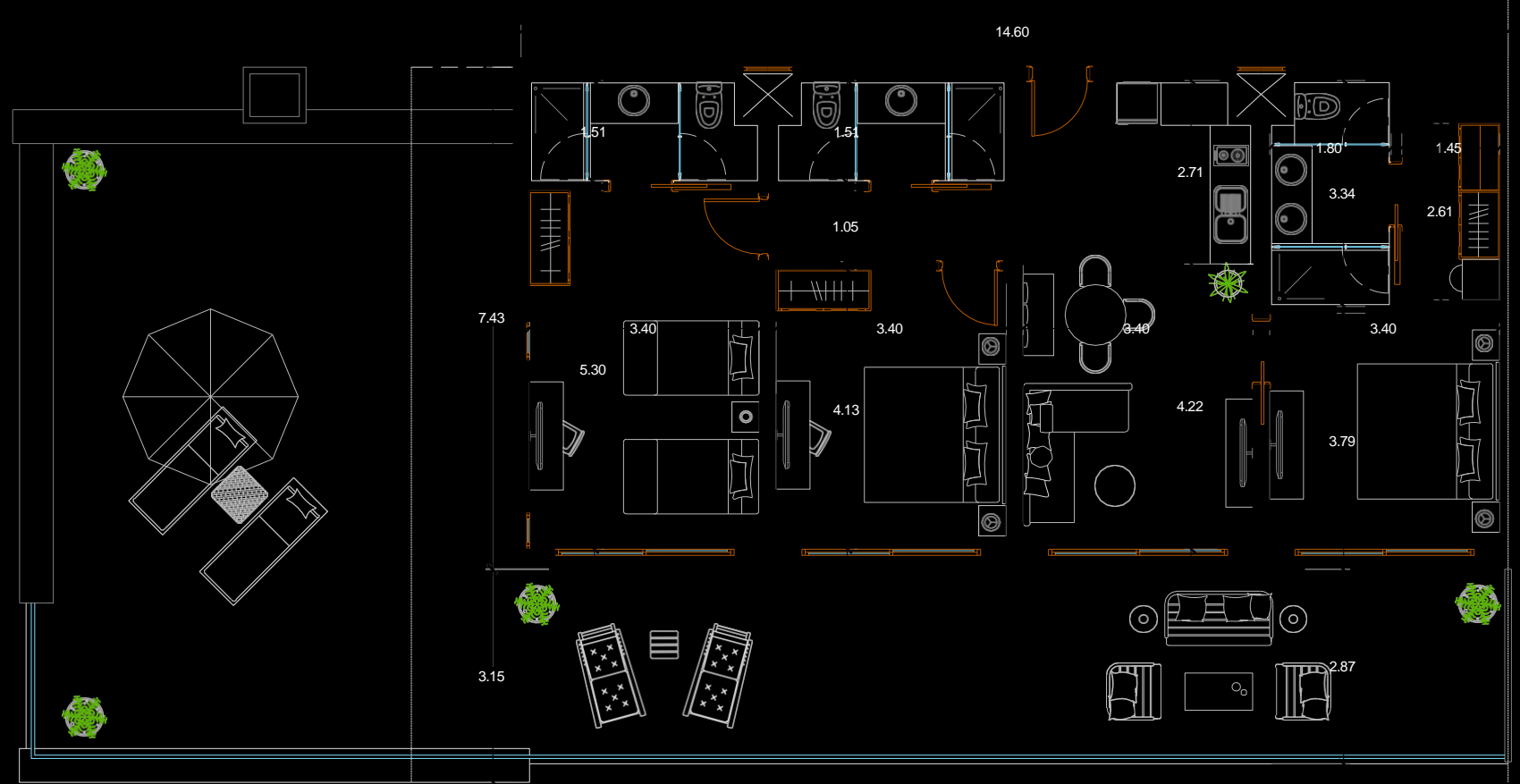
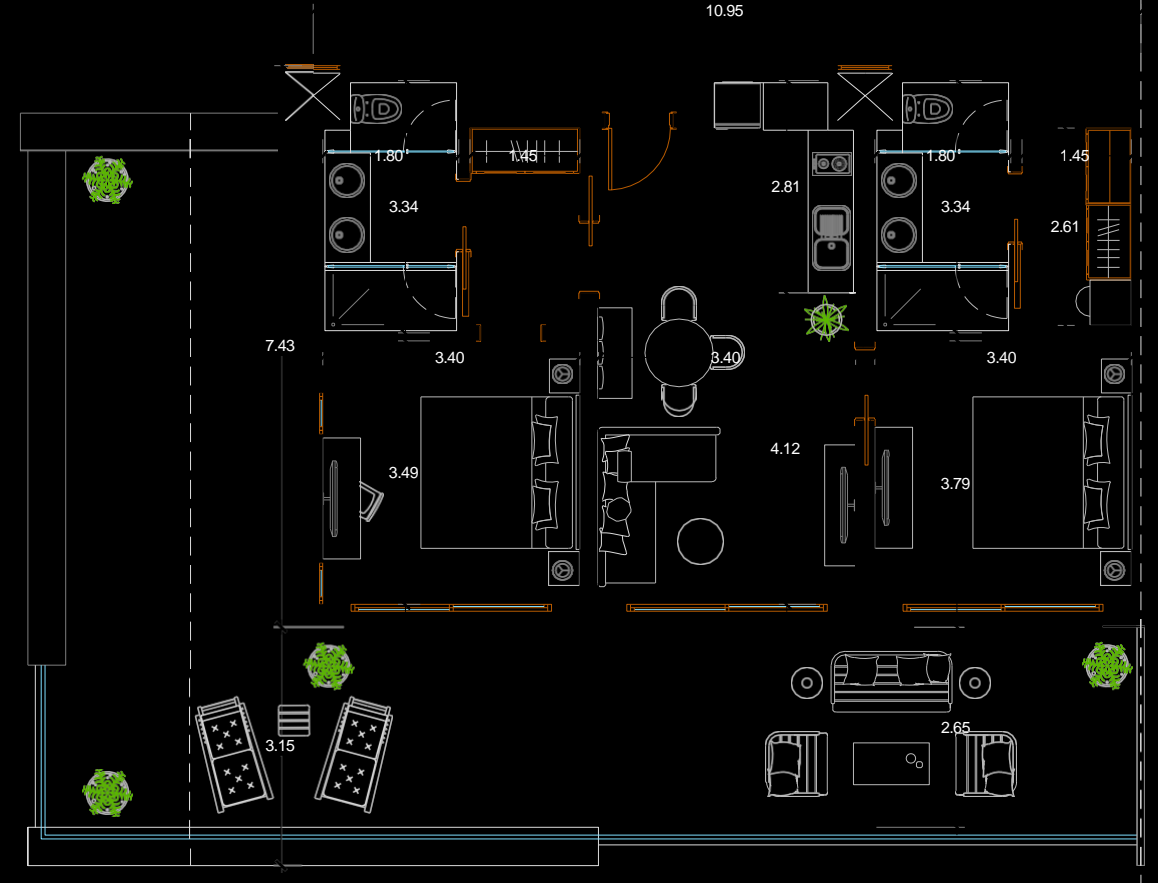
Condohotel Tipo C - 3 habitaciones
 Sup. Const. Condohotel 106.45m²
 Sup. Const. Terraza. 44.00m²



TIPO AA

Condohotel Tipo AA - 1 habitación
 Sup. Const. Condohotel 52.70m²
 Sup. Const. Terraza. 31.61m²

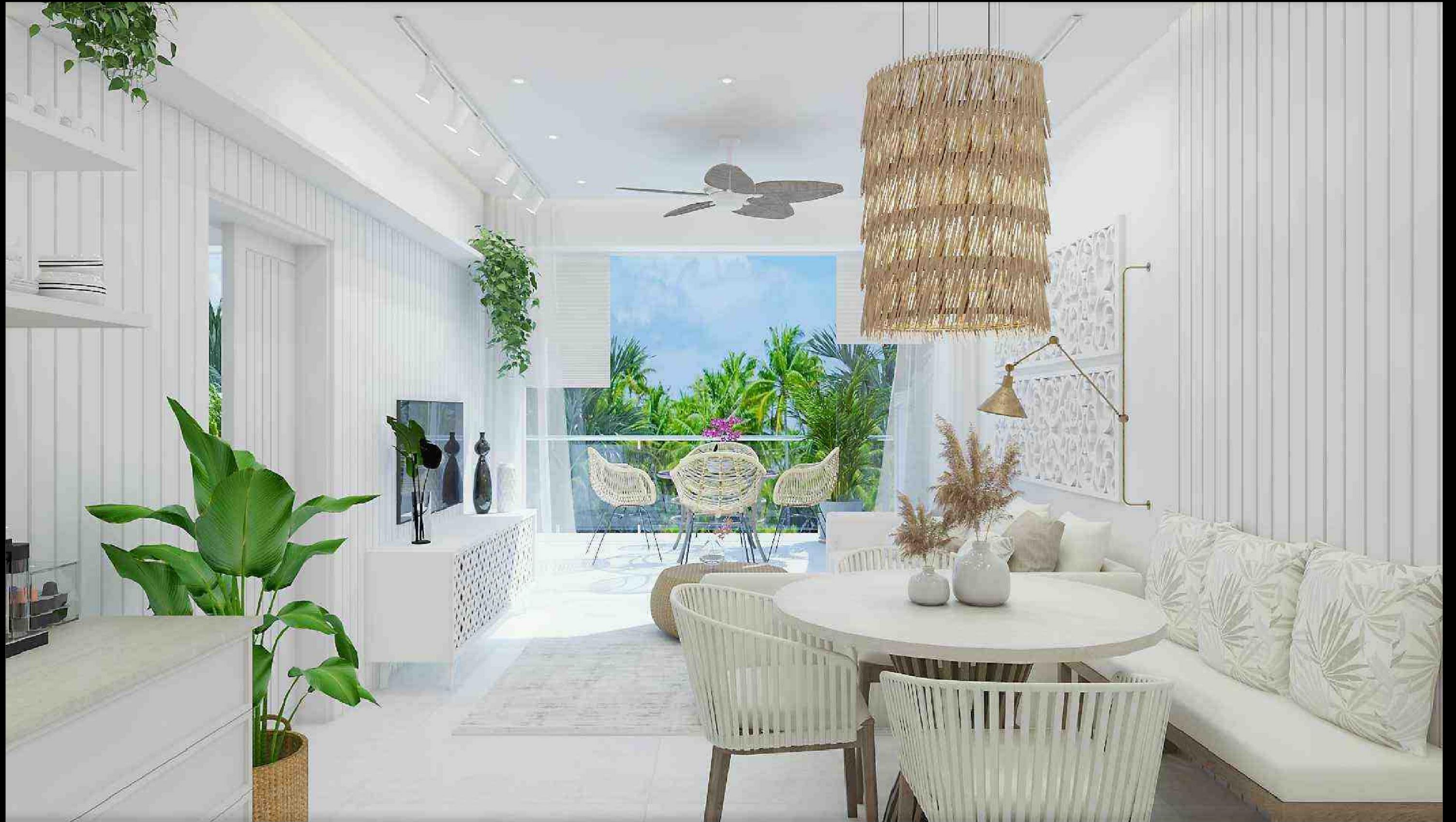
Condohotel Tipo BB - 2 habitaciones
 Sup. Const. Condohotel 78.58m²
 Sup. Const. Terraza. 34.89m²
 Sup. Const. Terraza Descubierta. 34.49m²



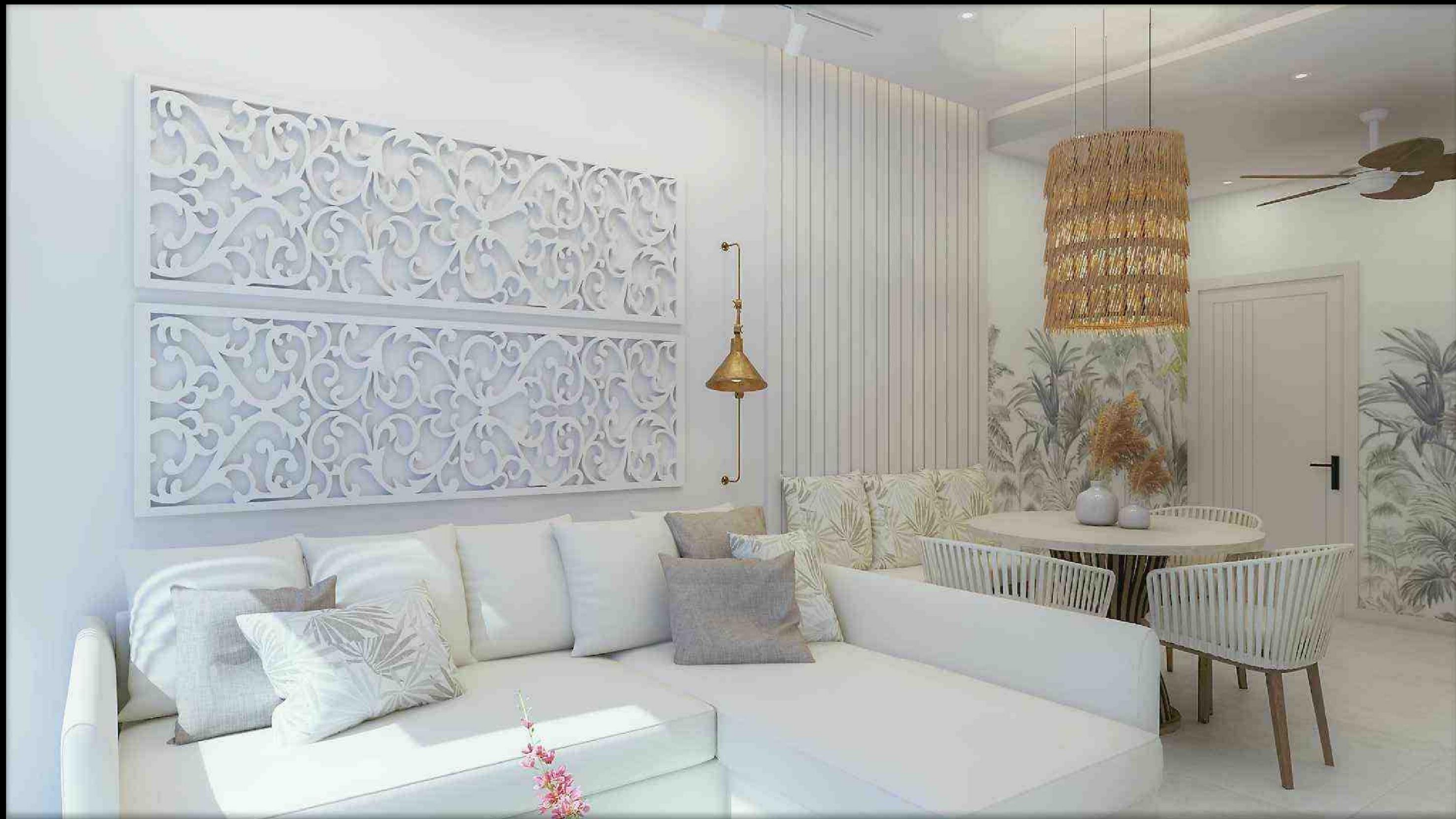
Condohotel Tipo CC - 3 habitaciones
 Sup. Const. Condohotel 107.38m²
 Sup. Const. Terraza. 44.00m²
 Sup. Const. Terraza Descubierta. 69.38m²





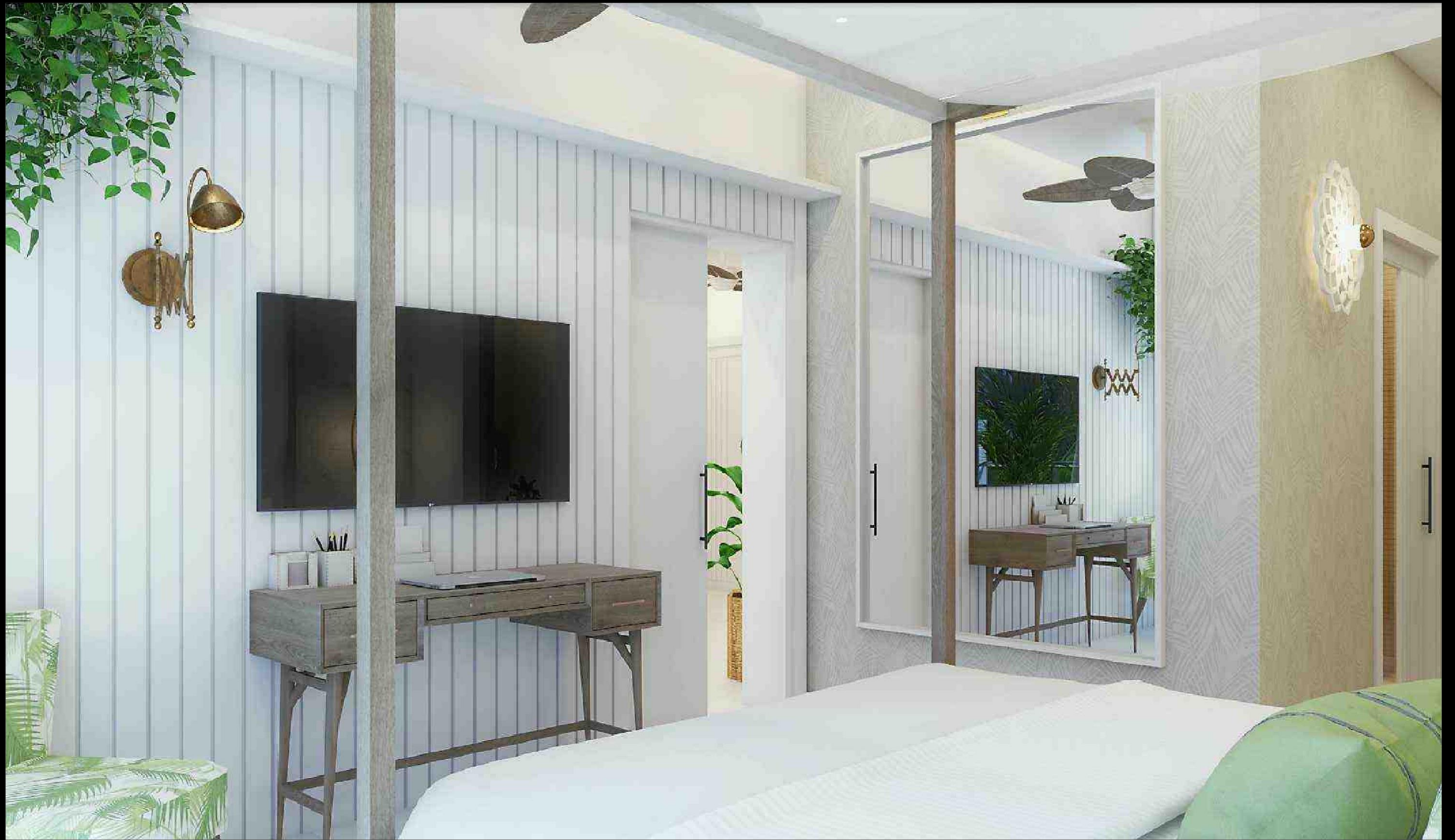




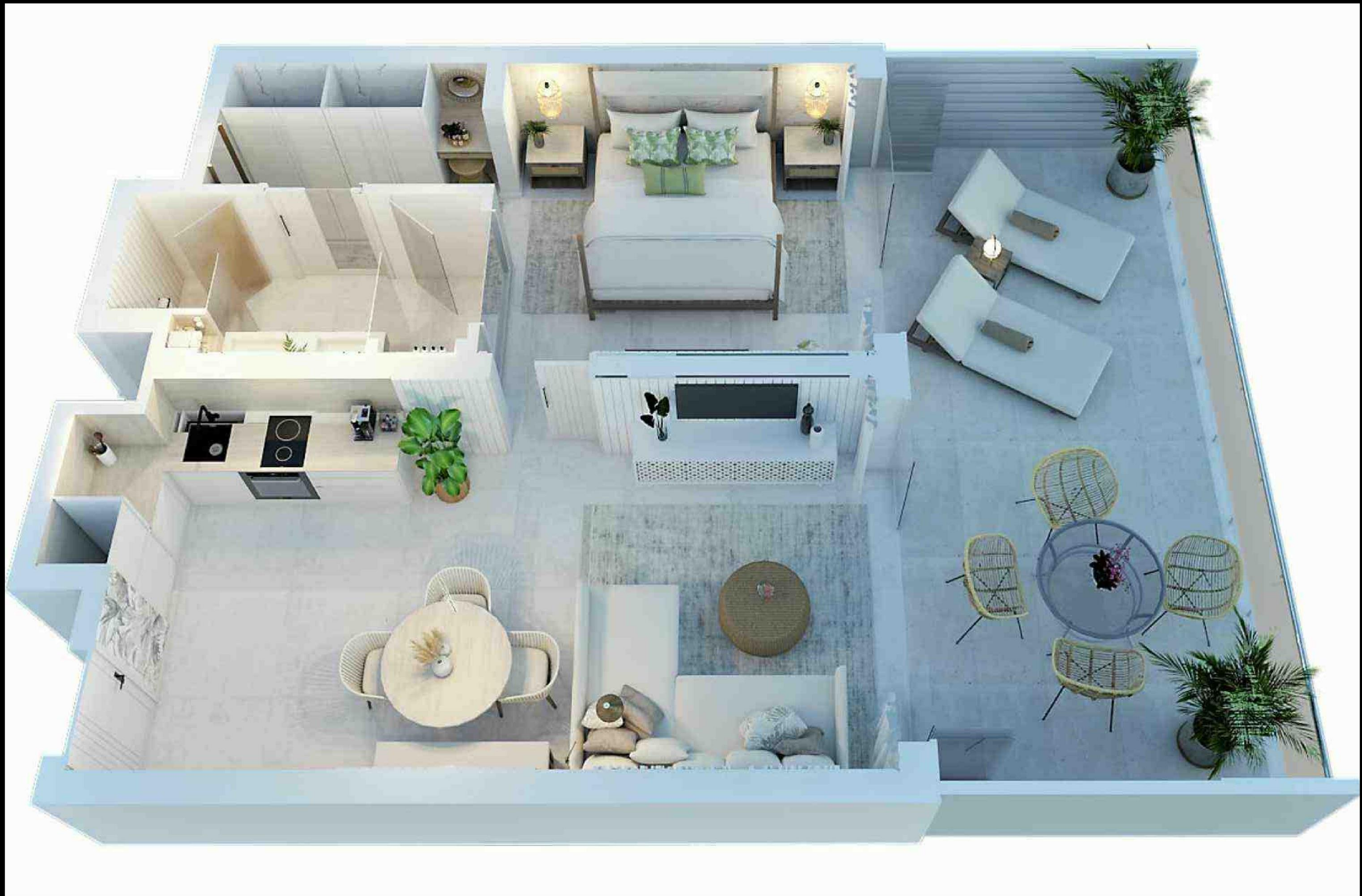














EL CAY OPTIONS AND COSTS

OPTION 1

This is to purchase the total tourist development Project on a 1,222,936,75m² with 880 linear meters of beachfront at Playa de “El Limón, the municipality of El Limón, Samaná, Dominican Republic.

With views of the Atlantic Ocean and the Cayo Limón, composed of 2,944 hotel rooms, condo-suites, apartments and five-star villas, 18-hole golf course, Congress Center, Casino, Shopping, Sports, Spa Center, health center, themed restaurants and natural spaces

EL CAY OPTIONS AND COSTS

OPTION 1

The total cost for this development is
US\$68,850,000

We have full details and documents that can be viewed
by interested parties at our office

EL CAY OPTIONS AND COSTS

OPTION 2

This is to purchase only the tourist development Project on a 212,467.13m² with 880 linear meters of beachfront at Playa de “El Limón, the municipality of El Limón, Samaná, Dominican Republic.

With views of the Atlantic Ocean and the Cayo Limón, composed of 2,944 hotel rooms, condo-suites, apartments Congress Center, Shopping, Sports, Spa Center, health center, themed restaurants and natural spaces

EL CAY OPTIONS AND COSTS

OPTION 2

The total cost for the development
US\$29,450,000

We have full details and documents that can be viewed
by interested parties at our office

NO TAXES

This international tourist and residential project of great scope, which will enjoy the tax credits inherent to the Definitive Classification of Confotur (Law 158/01 RD)

See this link

CONFOTUR LAW <https://confotur.mitur.gob.do/>

Project Development Team

The team have the combination of competences and accredited experience of the project development team made up of managers of hotel projects, builders, architects, urban planning lawyers, experts in environmental management, economists, which is decisive when it comes to achieving a comprehensive vision that guarantees the best results in terms of quality and applicability of the result, location, conservation of the natural environment and economic feasibility.

Desirable Location

This region is one of the most beautiful in the Caribbean and also requires, due to its fragility, a sustainable tourism commitment in environmental terms, which guaranty safety and the maximum sanitary hygiene control measures for users.