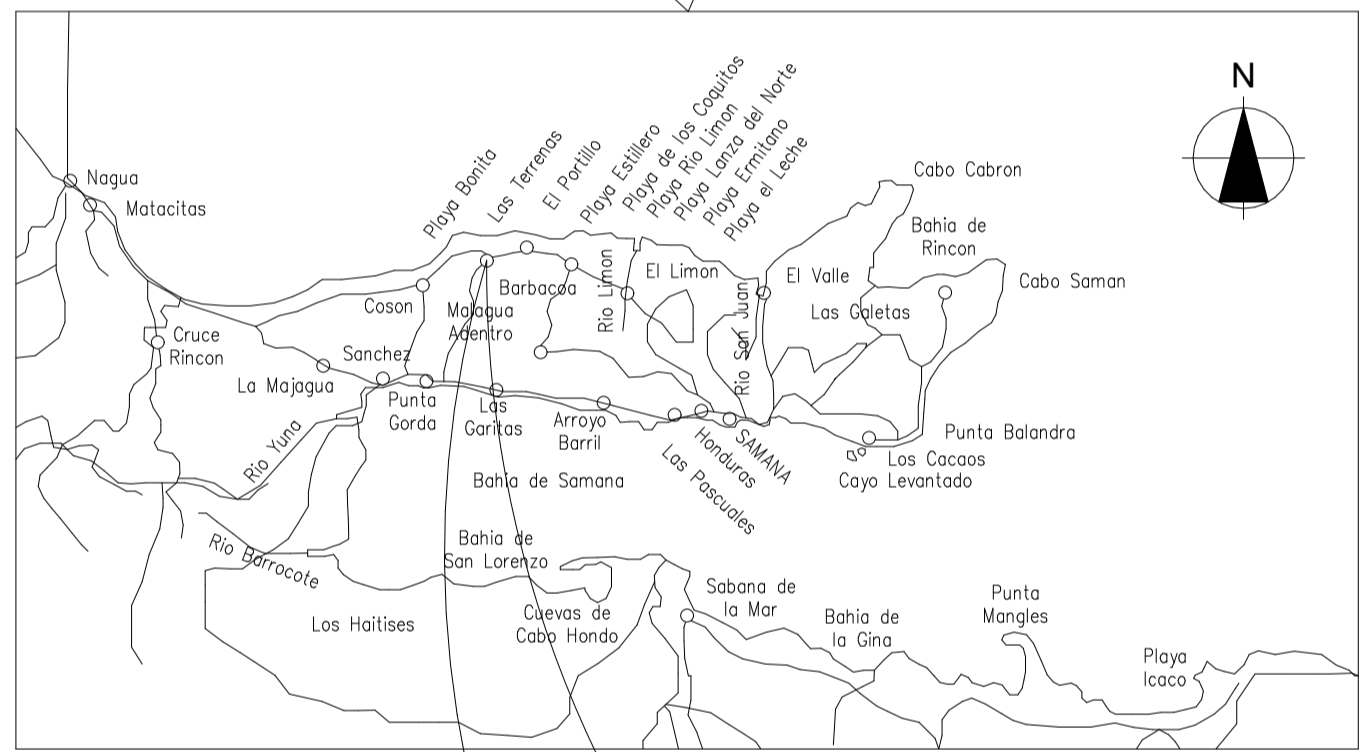
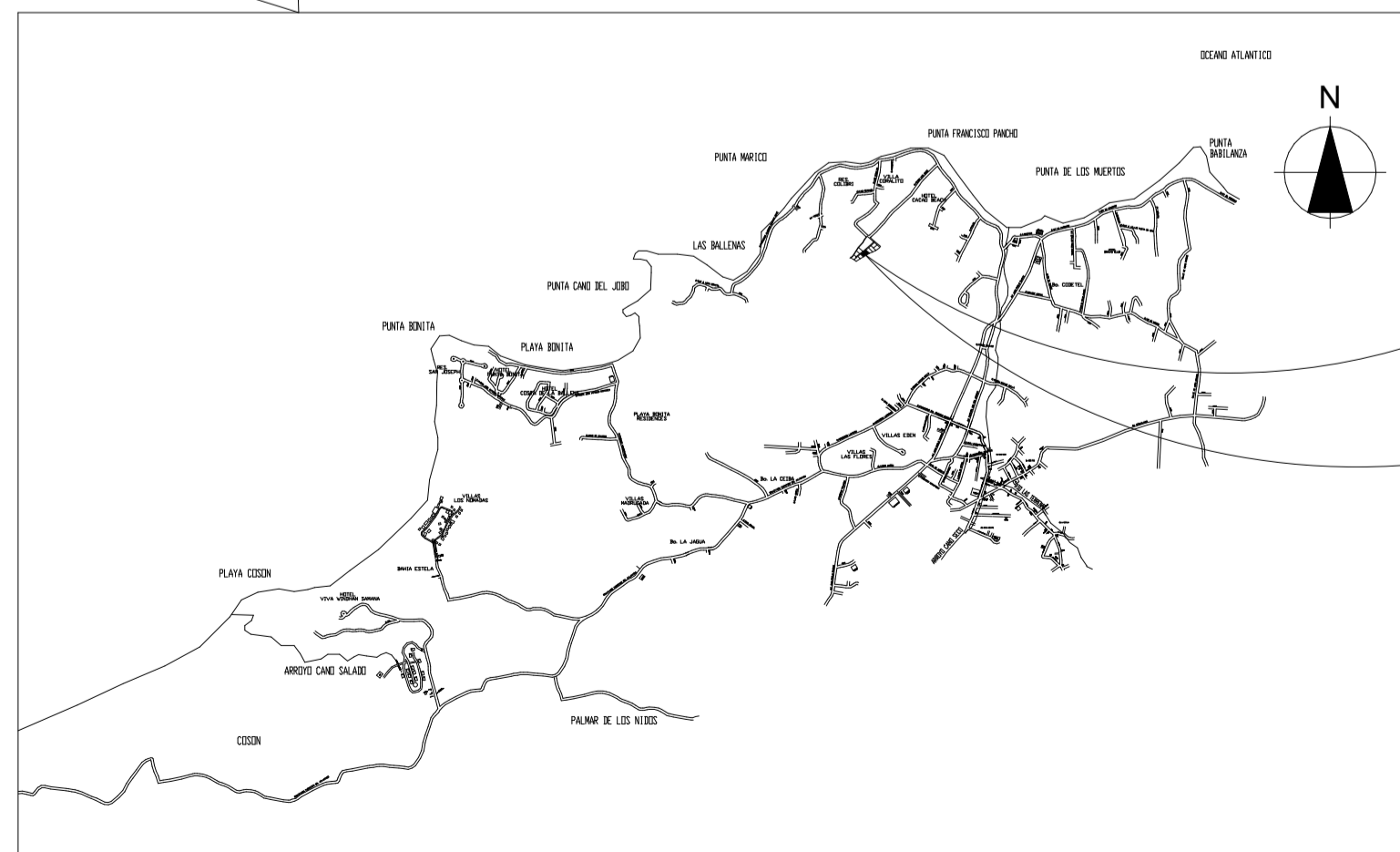


MAPA REPUBLICA DOMINICANA

LOCALIZACION EN EL PAIS (SAMANA)
ESC: -/-



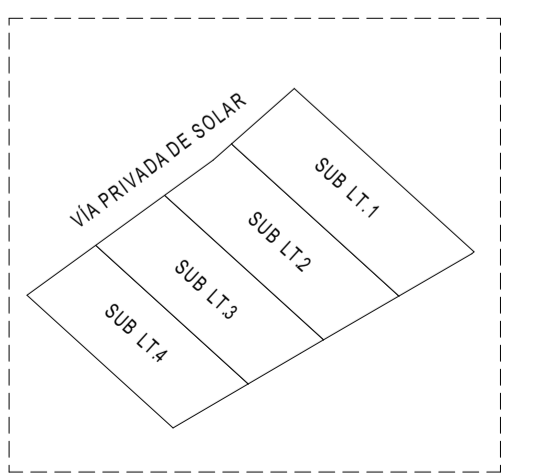
LOCALIZACION EN LA PROVINCIA (LAS TERRENAS)
ESC: -/-



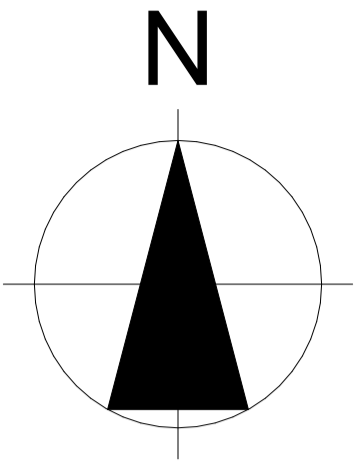
LOCALIZACION EN LAS TERRENAS (URB. LOS ALMENDROS)
ESC: -/-



PLANTA ARQUITECTÓNICA DE CONJUNTO
ESC: 1/100

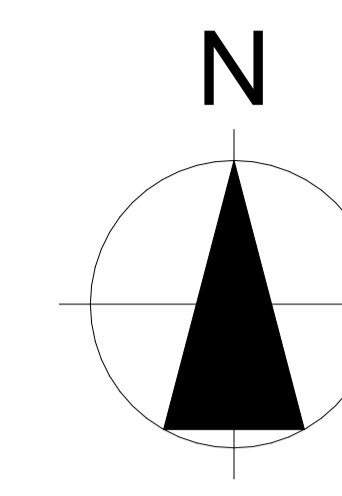


ESQUEMA DE LOTIZACIÓN

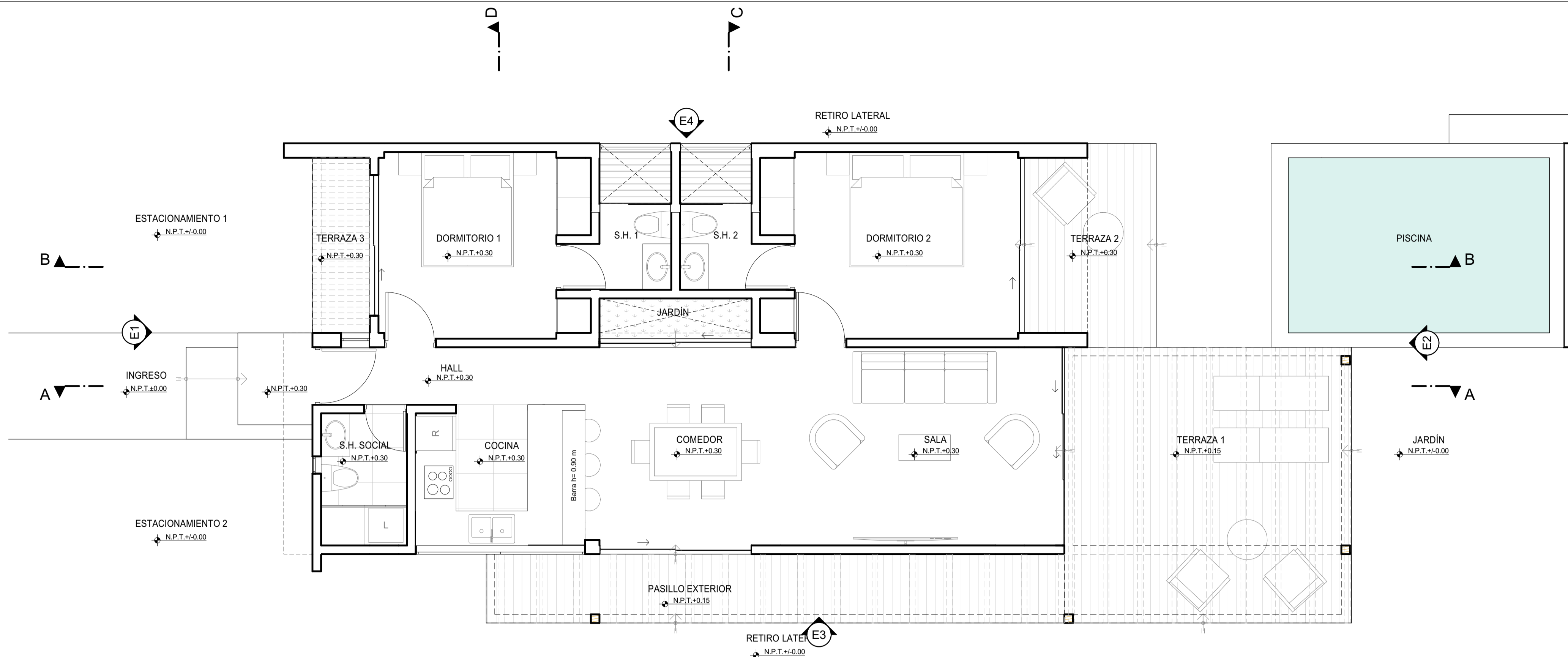


PLANTA ARQUITECTÓNICA DE CONJUNTO: NIVEL 1

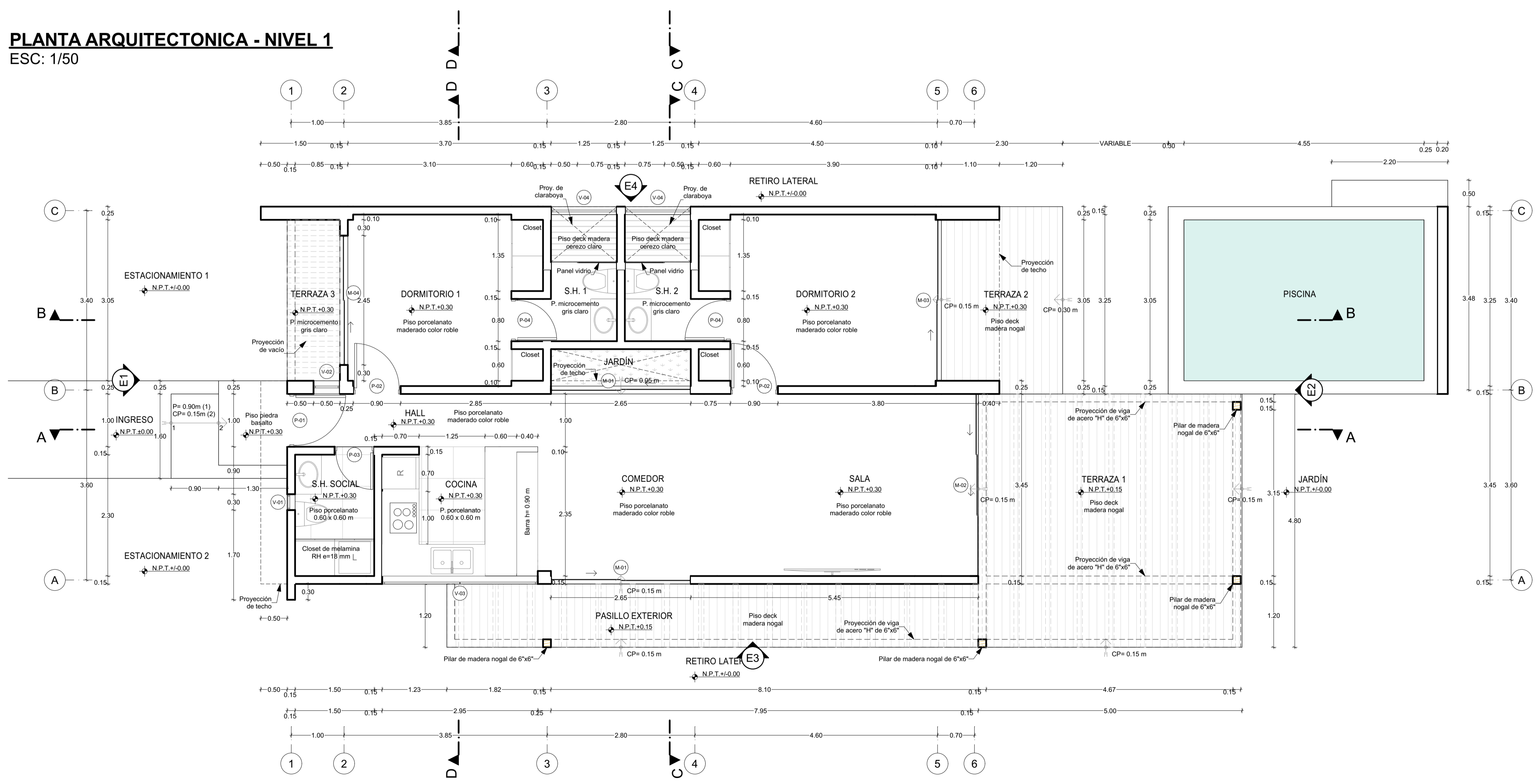
ESC: 1/100



PLANTA ARQUITECTÓNICA DE CONJUNTO: TECHO
ESC: 1/100



PLANTA ARQUITECTONICA - NIVEL 1
ESC: 1/50



PLANTA DIMENSIONADA - NIVEL 1
ESC: 1/50



Fachada principal



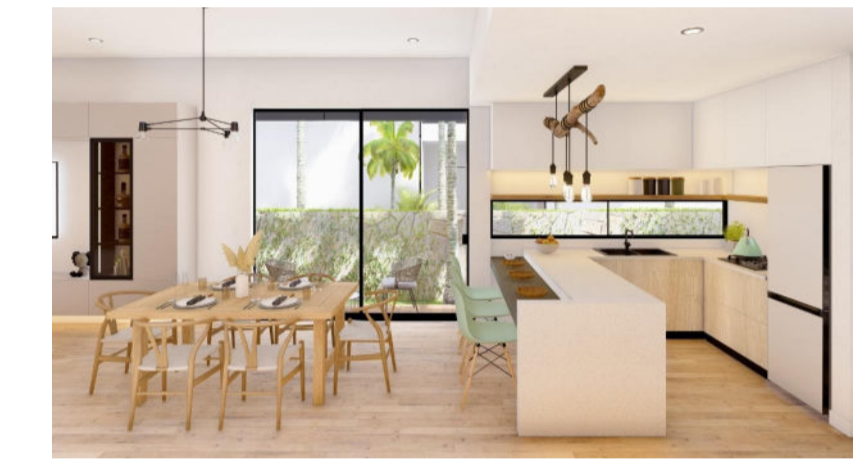
Fachada posterior



Fachada principal



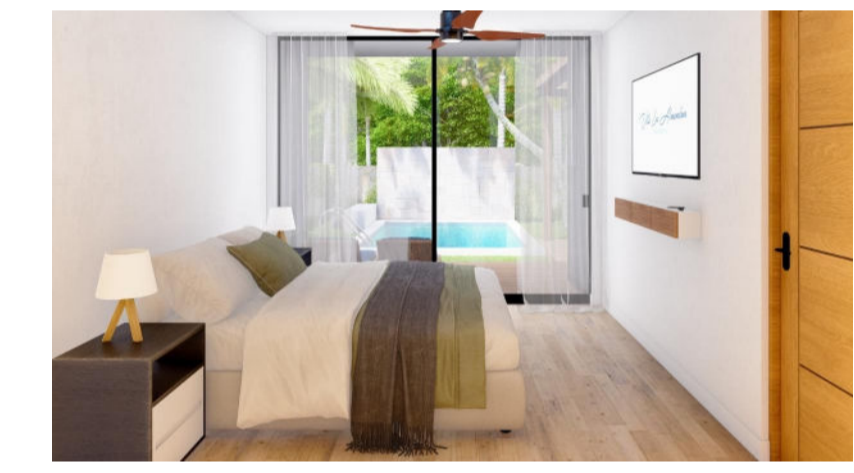
Terraza 1



Cocina y comedor



Sala



Dormitorio 2

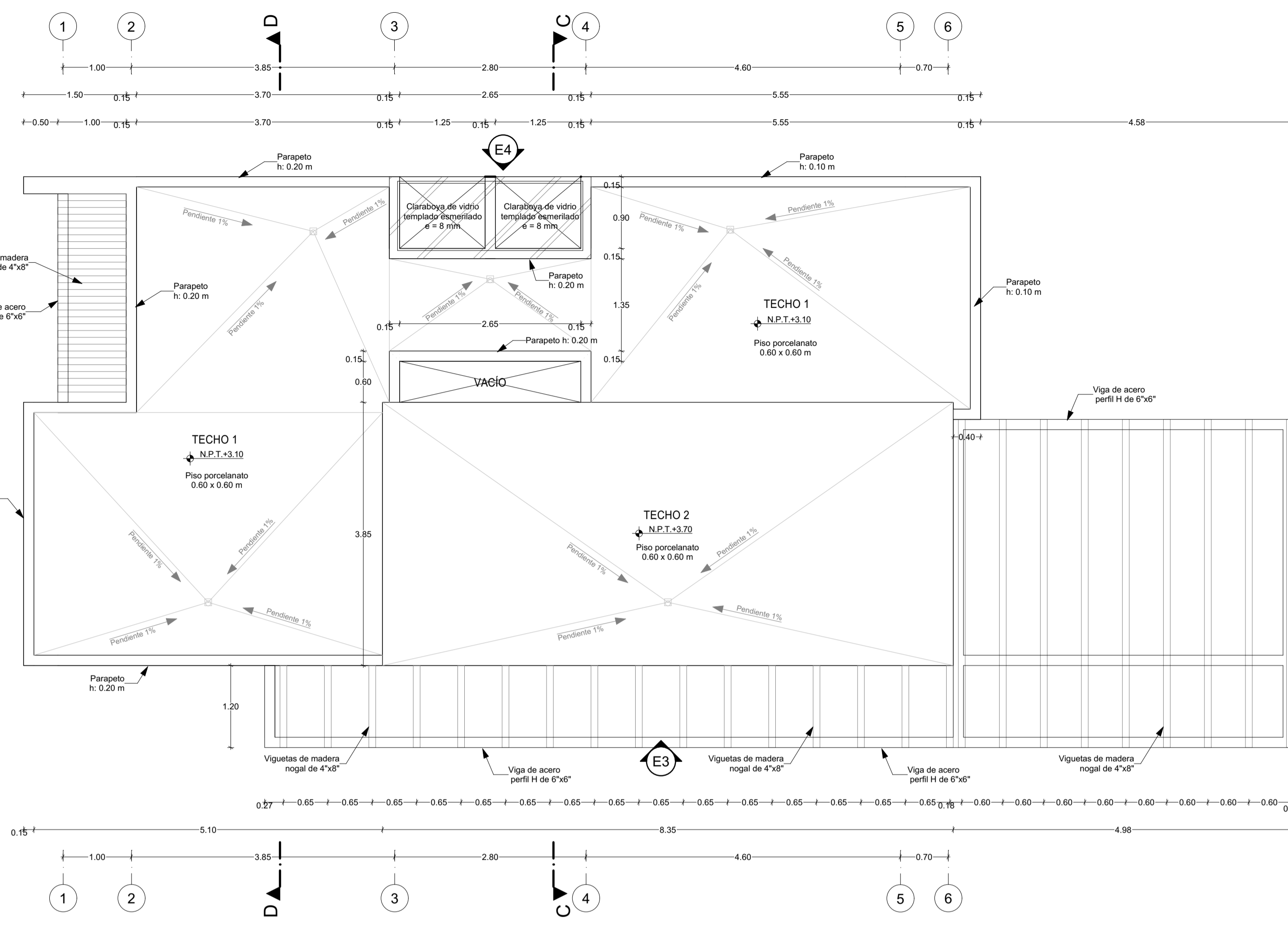


S.H. 2

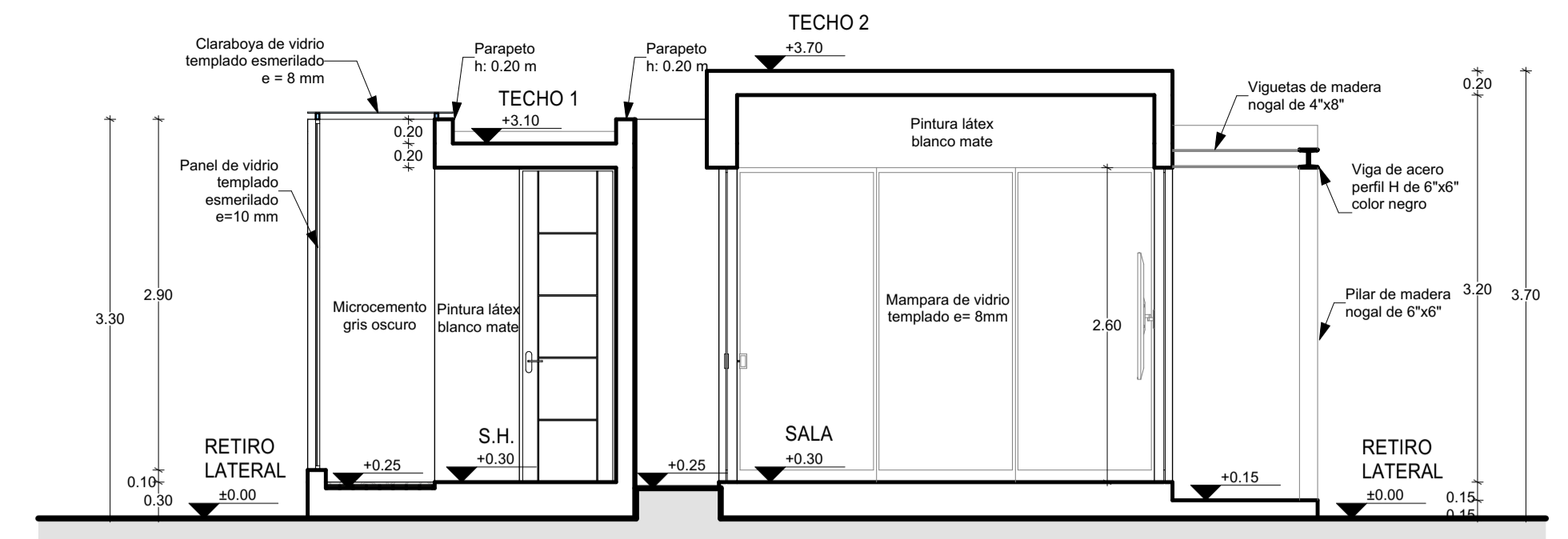
VISTAS 3D
ESC: -/-

| CUADRO DE VANOS: PUERTAS | | | | |
|--------------------------|-------|--------|---------|--|
| ID | Ancho | Altur. | Cantid. | Descripción |
| M-01 | 2.65 | 2.60 | 2 | Mampara corrediza de vidrio templado e=8 mm |
| M-02 | 3.45 | 2.60 | 1 | Mampara corrediza de vidrio templado e=8 mm |
| M-03 | 3.05 | 2.60 | 1 | Mampara corrediza de vidrio templado e=8 mm |
| M-04 | 2.45 | 2.50 | 1 | Mampara corrediza de vidrio templado e=8 mm |
| P-01 | 1.00 | 2.60 | 1 | Puerta de madera sólida color cerezo claro |
| P-02 | 0.90 | 2.60 | 2 | Puerta batiente contraplacada de MDF 4 mm color cerezo claro |
| P-03 | 0.75 | 2.60 | 1 | Puerta batiente contraplacada de MDF 4 mm color cerezo claro |
| P-04 | 0.80 | 2.60 | 2 | Puerta batiente contraplacada de MDF 4 mm color cerezo claro |

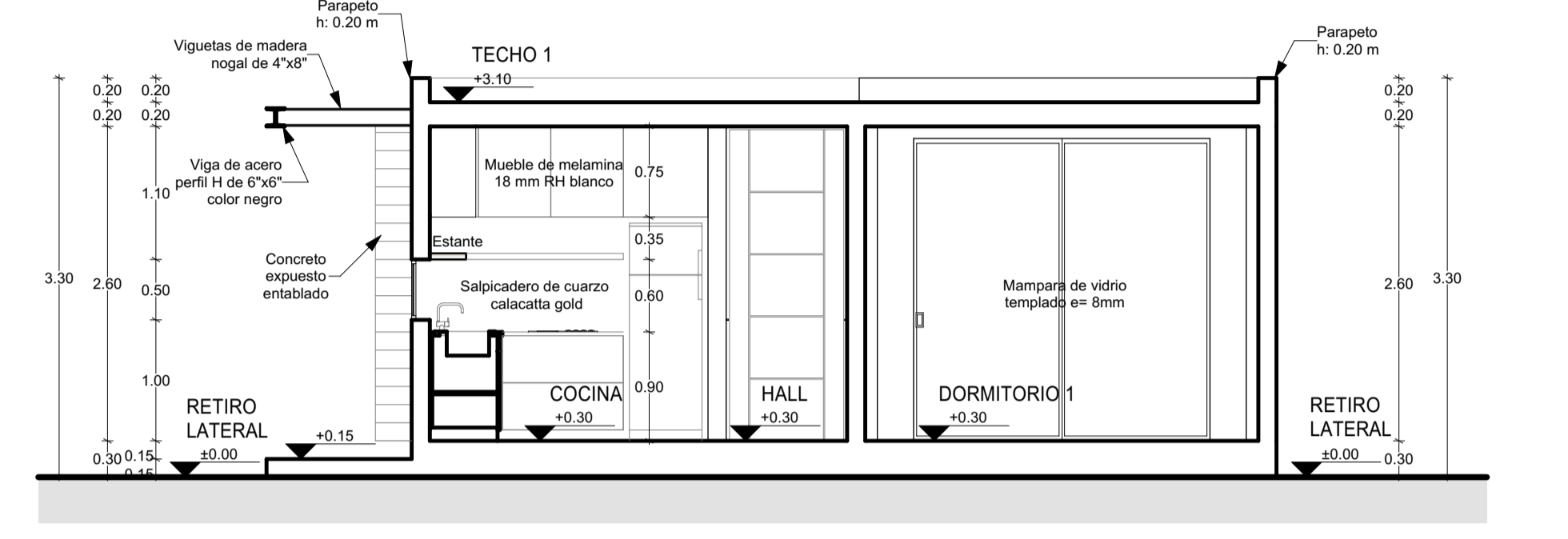
| CUADRO DE VANOS: VENTANAS | | | | | |
|---------------------------|-------|--------|---------|---------|--|
| ID | Ancho | Altur. | Alfeiz. | Cantid. | Descripción |
| V-01 | 0.30 | 2.60 | 0.00 | 1 | Ventana de vidrio templado pavonado e= 6 mm |
| V-02 | 0.50 | 2.50 | 0.00 | 1 | Ventana de vidrio templado e= 8 mm |
| V-03 | 2.95 | 0.50 | 1.00 | 1 | Ventana de vidrio templado e= 8 mm |
| V-04 | 1.25 | 2.90 | 0.10 | 2 | Ventana de vidrio templado esmerilado e= 10 mm |



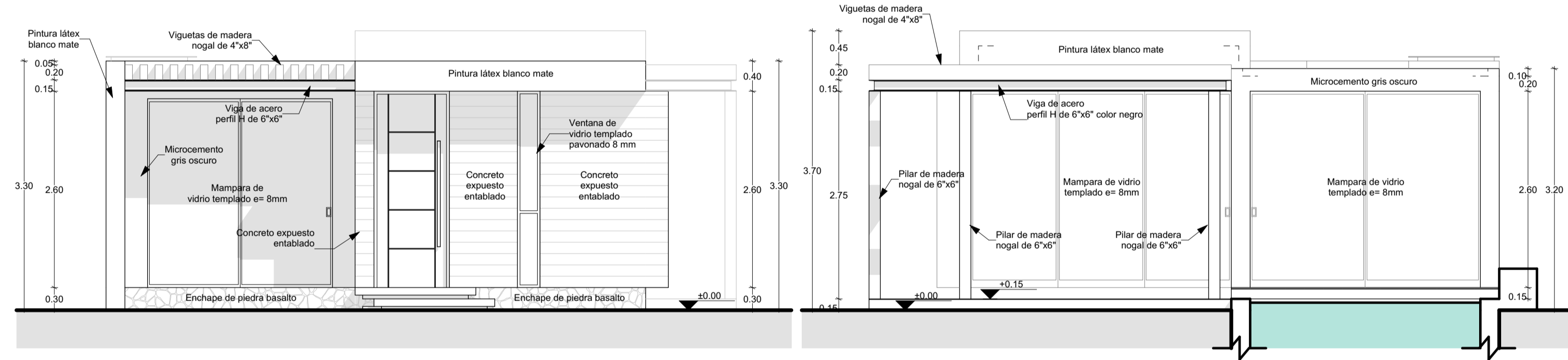
PLANTA DIMENSIONADA: TECHO
ESC: 1/50



CORTE C-C
ESC: 1/50

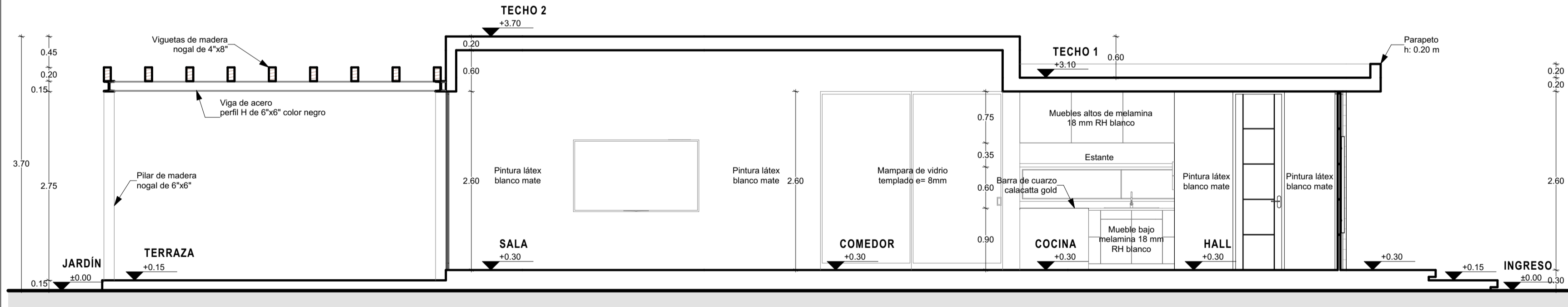


CORTE D-D
ESC: 1/50

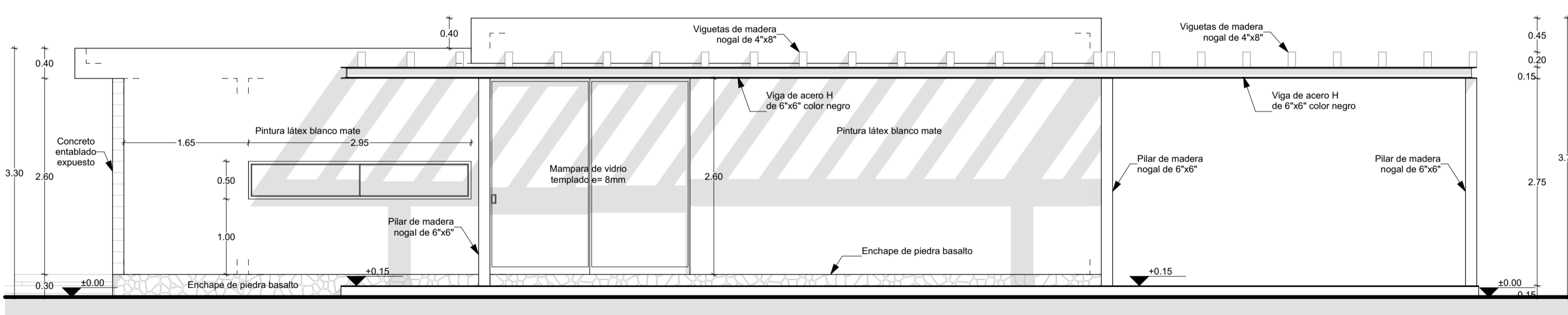


E1: ELEVACIÓN FRONTAL
ESC: 1/50

E2: ELEVACIÓN POSTERIOR
ESC: 1/50

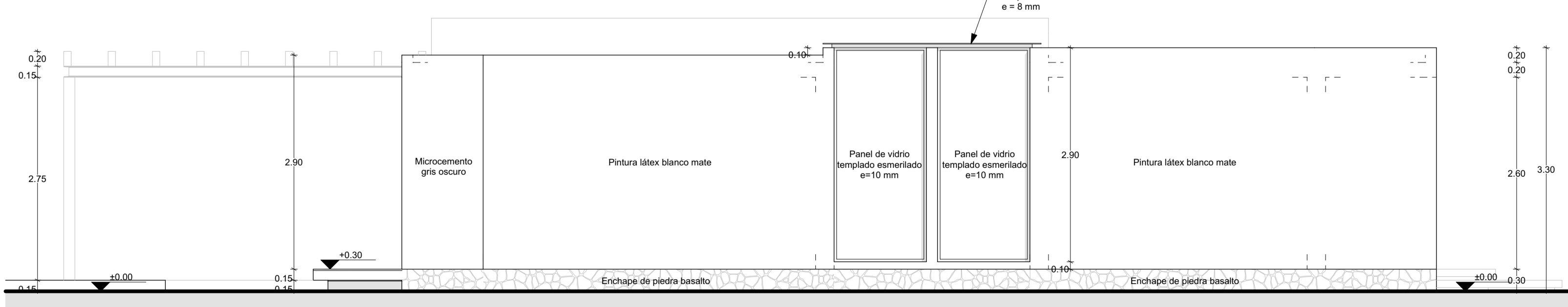


CORTE A-A
ESC: 1/50



CORTE B-B
ESC: 1/50

E3: ELEVACIÓN LATERAL DERECHA
ESC: 1/50



E4: ELEVACIÓN LATERAL IZQUIERDA
ESC: 1/50

